

Installation Plan Tumble dryer



PT 7188 EL

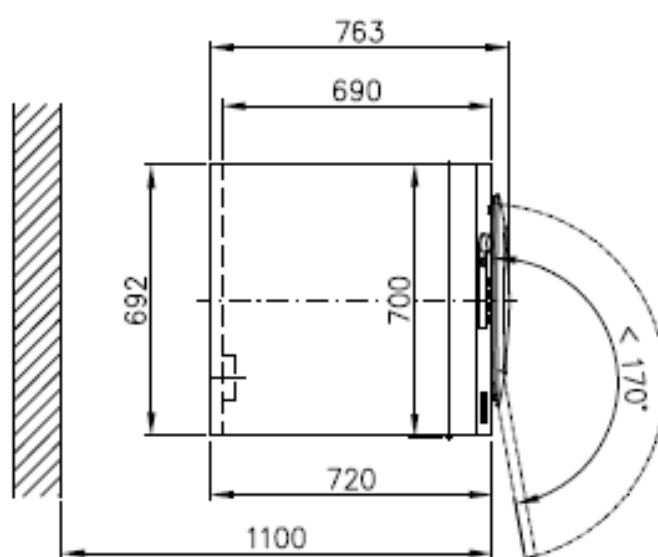
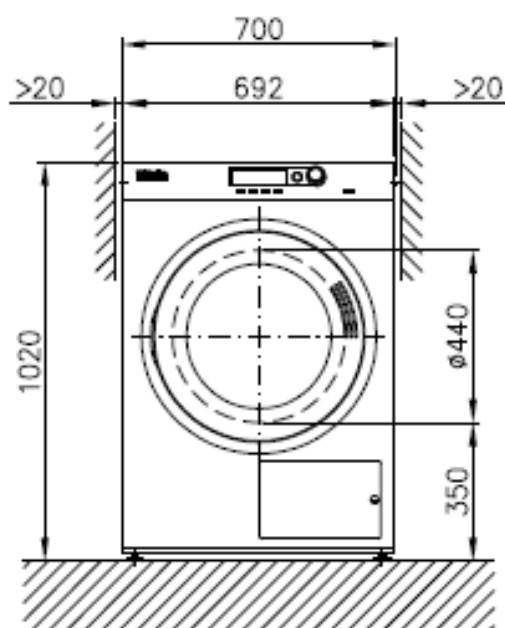
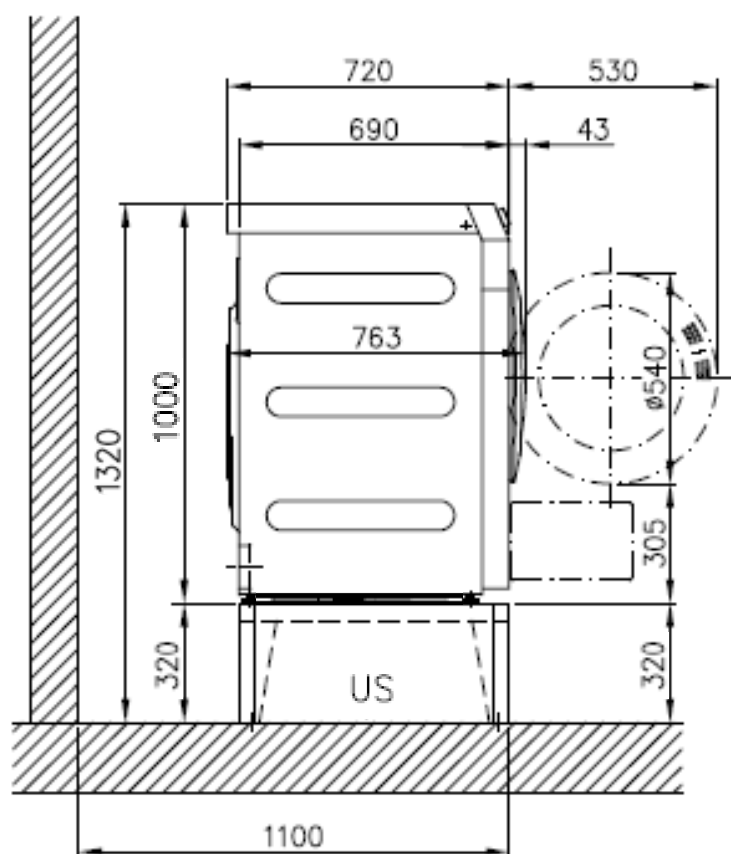
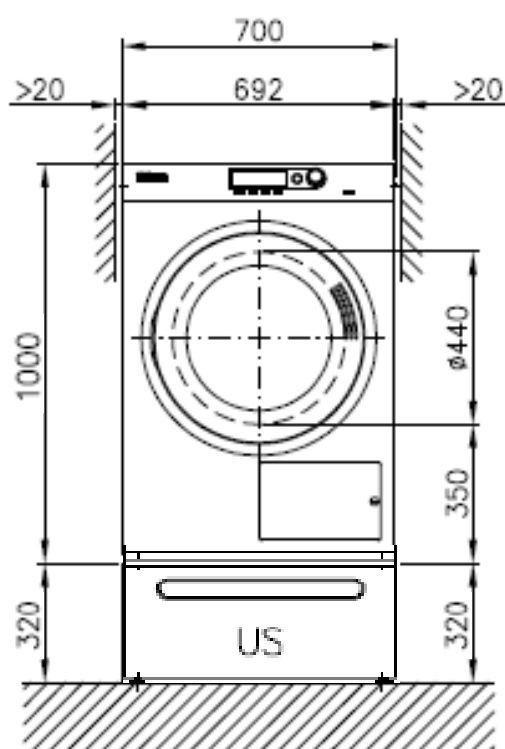
en - AU

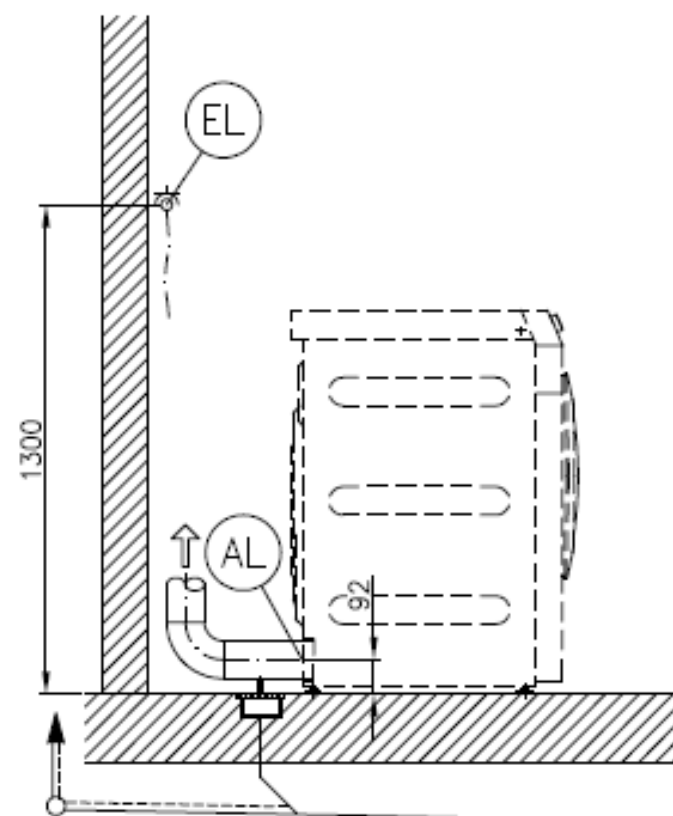
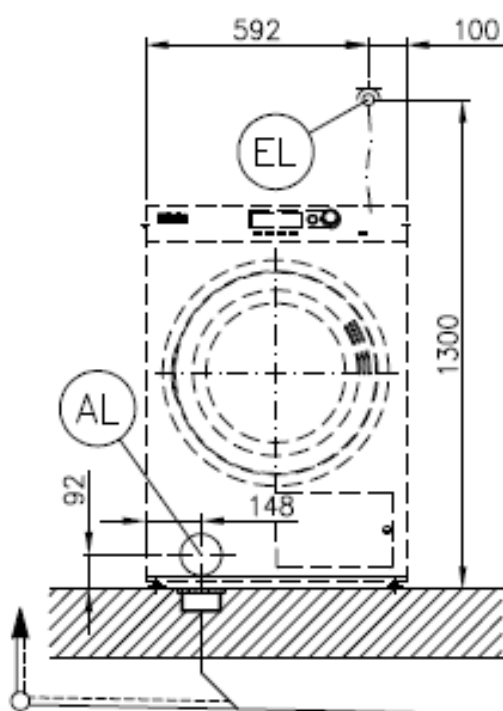
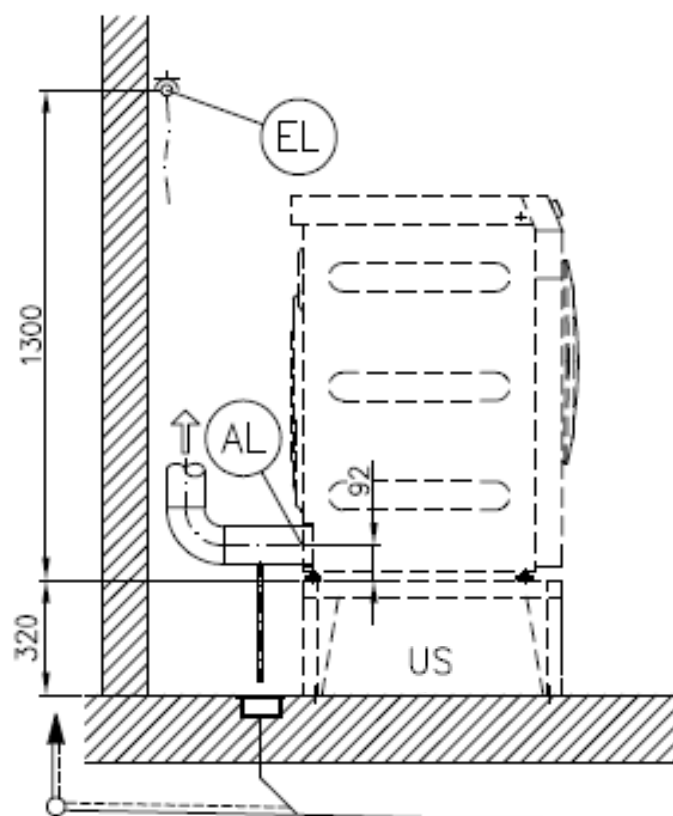
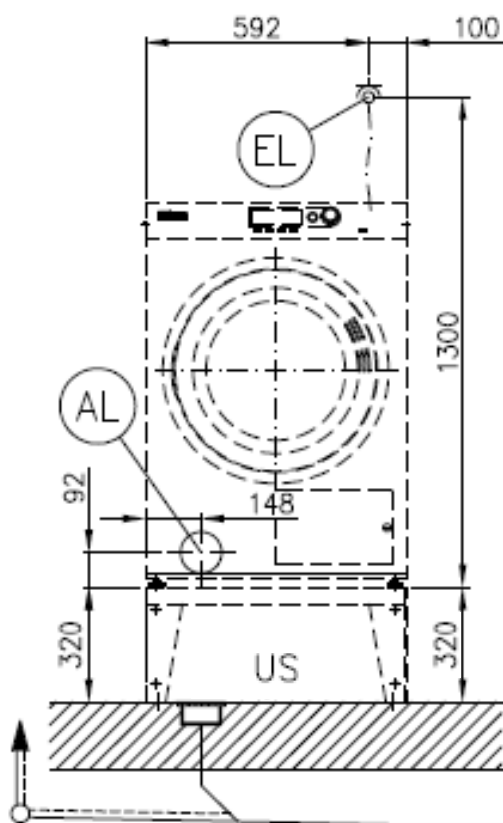
Australia:

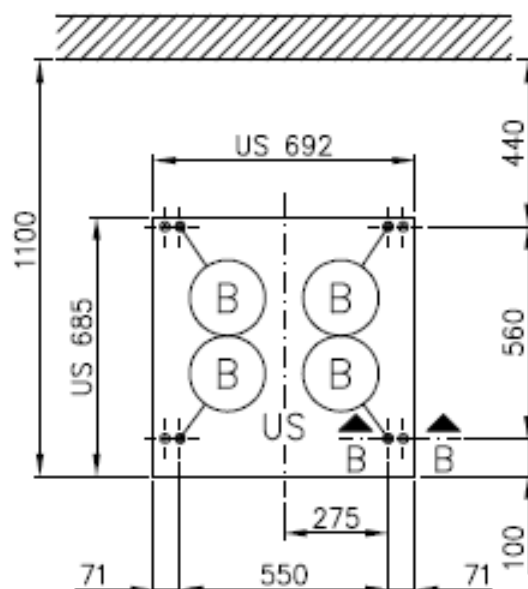
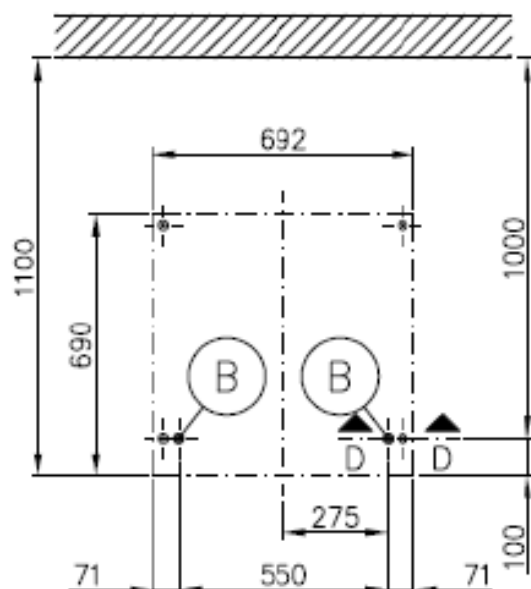
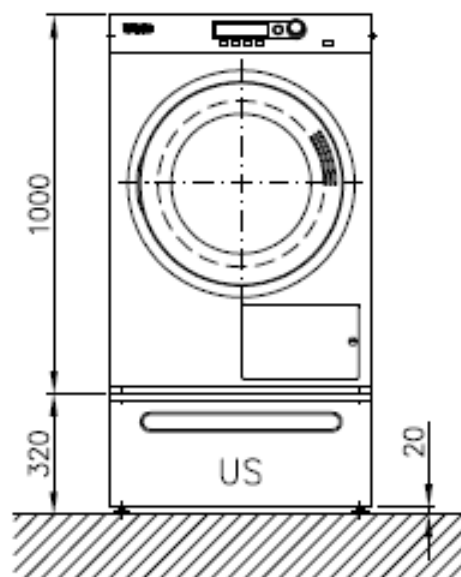
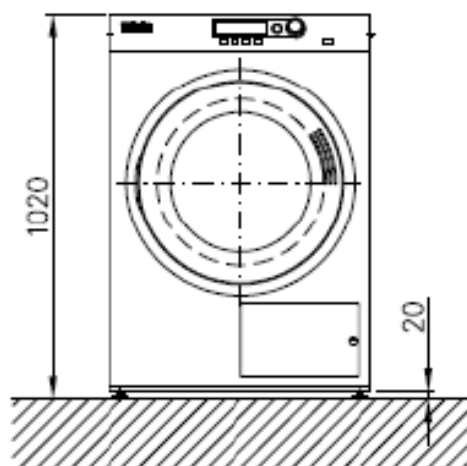
Miele Australia Pty. Ltd.
1 Gilbert Park Drive
KNOXFIELD
Victoria 3180
Tel. +61 3 97647-100
Fax +61 3 97647-129
Internet: www.miele.com.au

It is essential to read the operating and installation instructions before
installing, commissioning or using the machine.
This avoids the risk of accidents or damage.

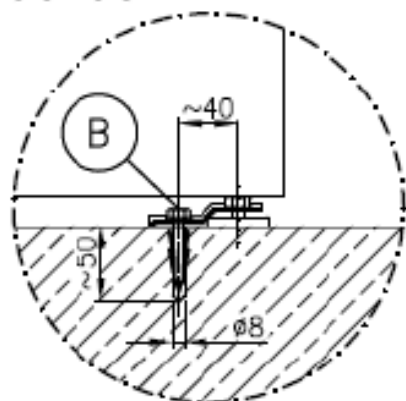
All rights reserved



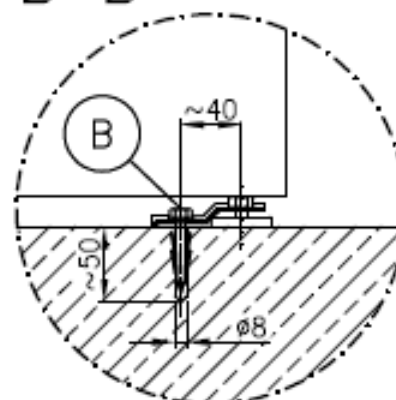


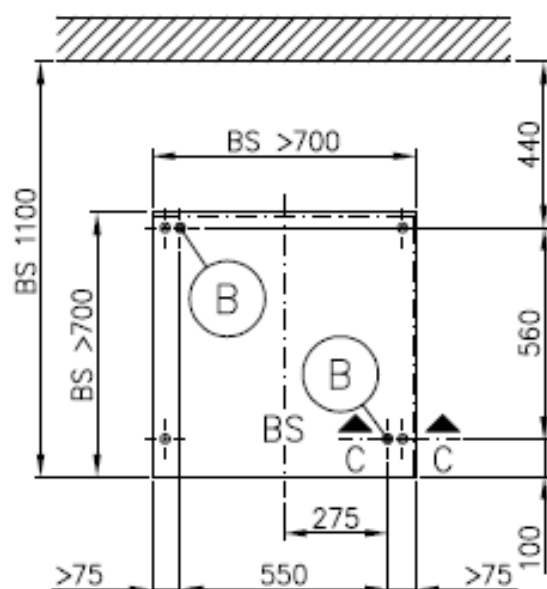
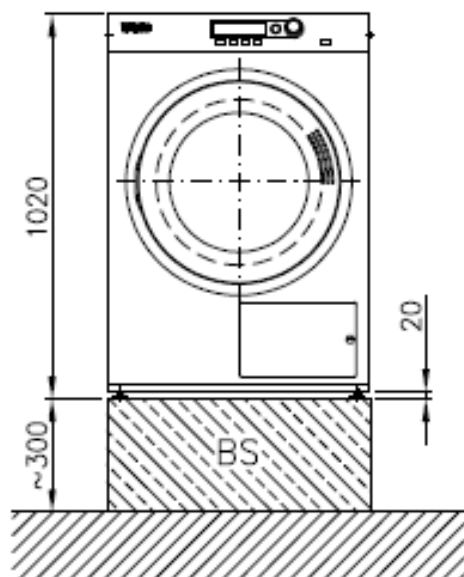


A - A

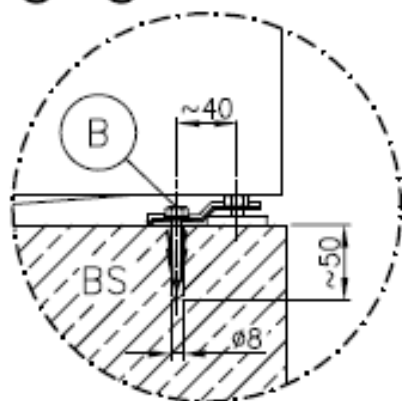


B - B





C - C



Technical datasheet

Miele
PROFESSIONAL

Tumble dryer:
Heating:

PT 7188
Electric (EL)

Legend:



Abbreviations in bold type:
Connection required



Abbreviations in circle with dashes:
Connection optional or required depending on model version

en - AU

Optional extras:

UM	Miele plinth	US 6008 (US = plinth with drawer)		
		Height	mm	320
		Width	mm	692
		Depth	mm	685
BS	Concrete plinth	Quality and density of concrete must comply with load. Concrete plinth must be firmly secured to floor!		
		Recommended height	mm	300
		Minimum height	mm	70
		Recommended width	mm	≥700
		Recommended depth	mm	≥700

Machine connections:

	Electrical connection	1. Standard voltage (as supplied)	V	1N AC 230 - 240
		Frequency	Hz	50
		Rated load	kW	5.78 – 6.24
		Fuse rating	A	1 × 25
		Supply lead cross-section	mm ²	3 × 2.5
		Length of supply lead	mm	2170
		Supply lead with plug (supplied)		
		Electrical connection must comply with national regulations. A wall socket or mains isolator must be easily accessible after installation. Reinstallation of the supply point, changes to the equipment or checks on the protective conductor, including determination of correct fuse rating, should only be performed by a properly trained electrician.		

(AL)	Vented	<p>Nominal air throughput in vented mode Max. permissible pressure loss Waste air/gas temperature, max. Connector on machine (int. diameter) Connection pipe provided on site (ext. diameter)</p> <p>Miele adapter, Mat. No. 6595070 (int. diameter 100 mm) for flexible aluminium ducting and adapter, Mat. No. 915051, (ext. diameter 110 mm) for connection to standard heat-resistant plastic pipes supplied. As relative humidity inside the vent ducting can be as high as 100%, suitable measures must be taken to prevent a back-flow of condensate into the machine.</p>	<p>m³/h Pa °C mm mm</p>	<p>320 420 80 100 100</p>
(ZL)	Air intake	<p>Standard Connection: ⇒ Air intake from installation site Min. air intake cross-section (to prevent draughts in room) A sufficient supply of fresh air should be ensured to replace the air extracted.</p>	cm²	237
(B)	Fittings (supplied)	<p>Miele US 6008 plinth 4 × metal angled brackets (to secure machine to plinth) 4 × screws DIN 571 (Ø × length) 4 × rawl plugs (Ø × length) Machine must be bolted to the floor! Fixing materials for a floating screed floor are to be provided on site.</p>	<p>mm mm</p>	<p>6 × 50 8 × 40</p>
		<p>On concrete platform 2 × clamps 2 × screws DIN 571 (Ø × length) 2 × rawl plugs (Ø × length) Machine must be bolted to the floor! Fixing materials for a floating screed floor are to be provided on site.</p>	<p>mm mm</p>	<p>6 × 50 8 × 40</p>
	Machine data	<p>Unit width Machine depth Unit height Casing width Casing depth Minimum width of delivery access to installation site Minimum rear wall gap (measured to front of machine) Wall gap (to front of machine) Minimum gap ensures sufficient space for maintenance and servicing. Net weight Dynamic floor load, max. Average heat dissipation (dependent on ambient room temperature and programme selected) Sound pressure (re 20 mPA), workplace-related (at distance of 1 m and height of 1.6 m)</p>	<p>mm mm mm mm mm mm mm mm mm mm kg N W dB (A)</p>	<p>700 763 1020 692 690 720 1100 900 77 1000 450 <70</p>
<p>Installation should only be carried out by authorized fitters in accordance with valid regulations! Observe installation instructions when installing machine! All rights reserved! Measurements in mm.</p>				