

Installation plan

PG 8130
PG 8131
PG 8132
PG 8133

It is **essential** to read the operating instructions and service documents before installation or use of this appliance. This will prevent both personal injury and damage to the machine.

en - AU, NZ

Installation notes

Please read and observe the operating instructions and the service documents regarding installation and setting up of this dishwasher.

Installation requirements

This dishwasher must be installed by a **suitably qualified person with the appropriate electrical and plumbing qualifications** in accordance with the installation instructions supplied.

This dishwasher must be installed in accordance with all applicable standards and guidelines, including legal requirements and health and safety regulations.

The machine must be **commissioned** and operatives trained in its use by Miele Professional Service or by an authorised Miele Service Partner only.

Electrical connection

Connection to the electrical supply must be in accordance with valid legal requirements, health and safety regulations, and applicable standards. The mains connection cable must be protected from the risk of thermal damage.

We recommend connecting the dishwasher to the power supply via a suitable **plug and socket** as this will make it easier to carry out the electrical safety test during commissioning and after any service work.

For **hard-wired** dishwashers, connection must be via a main switch to be provided on site, which must completely isolate the machine from the power supply with a contact gap of at least 3 mm.

The plug, socket, and main switch must be easily accessible once the dishwasher has been installed.

Equipotential bonding and earthing

For added safety, the dishwasher should be protected with a **residual current device** with a trip current of 30 mA.

Equipotential bonding should be carried out if required. The screw connection point for equipotential bonding is located at the back of the dishwasher. Equipotential bonding and earthing must be carried out before the machine is commissioned.

Water connection

This appliance must be installed according to AS/NZS 3500.1. This appliance has been supplied with a separate backflow prevention device (non-return valve) and must be connected to the water tap.. The tap for the water supply must be easily accessible.

The dishwasher can be connected to either a cold water or hot water supply.

Environmental requirements

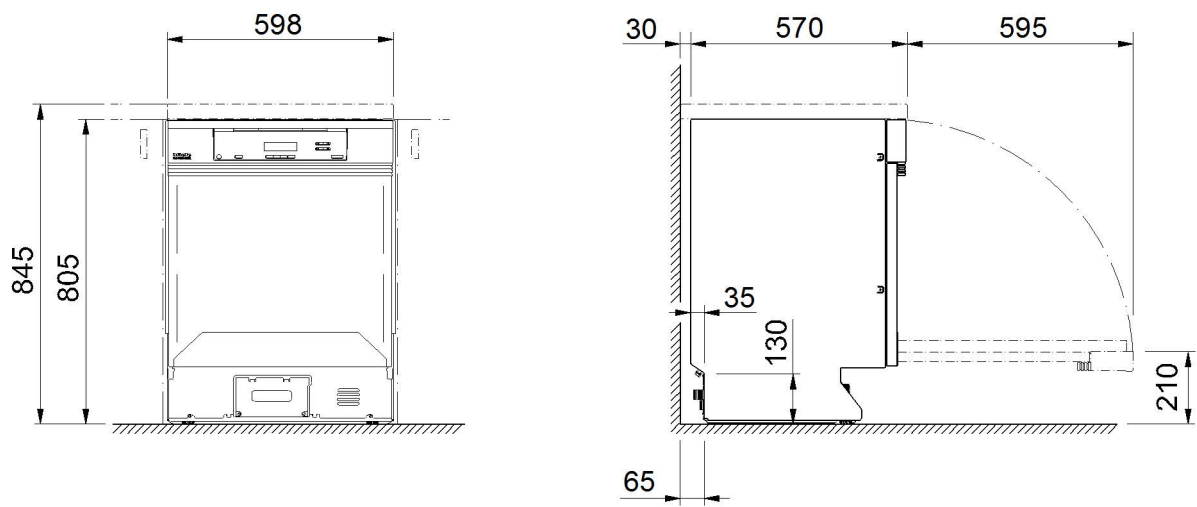
Condensate can build up in the area surrounding the dishwasher. Any cabinetry and fittings in the room must therefore be suitable for purpose. If the machine is fitted under a suitable worktop (built-under and integrated models), the stainless steel steam deflector plate provided must be fitted above the door aperture to protect the worktop from moisture damage. A matching steam deflector plate is also available for order at a later date from Miele Professional Service.

Connecting an external dispensing system

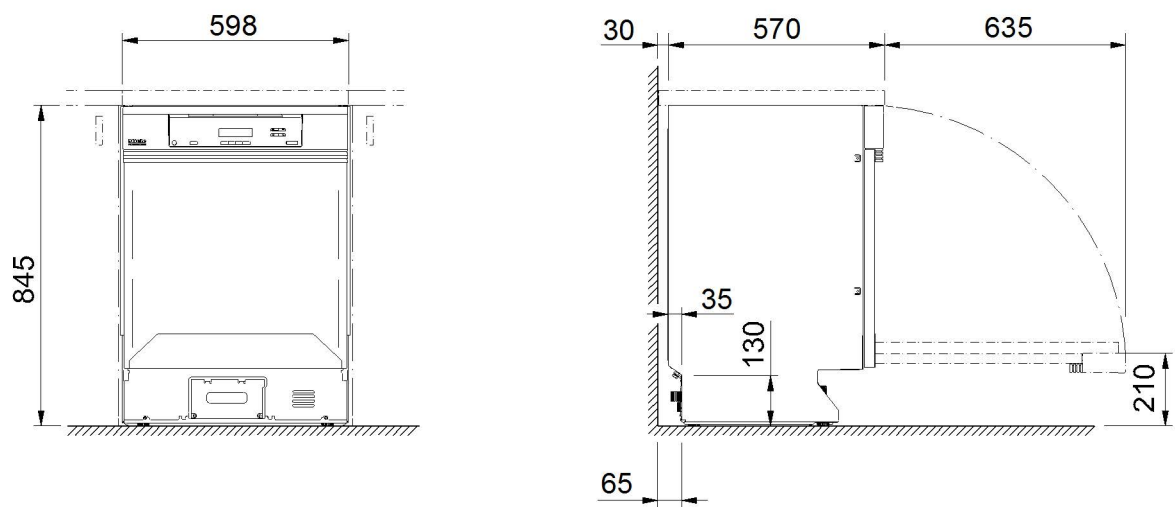
A dispensing system for liquid detergent and rinse aid can be connected at the back of the machine.

Illustrations

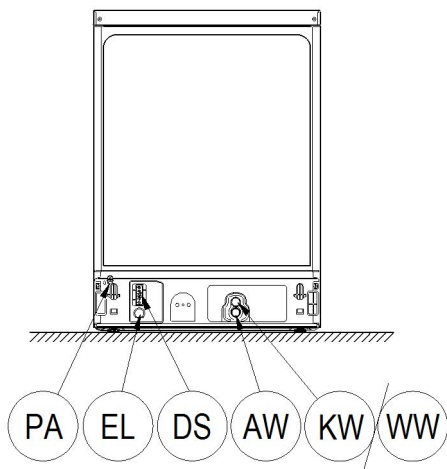
PG 8130-31 dimensions



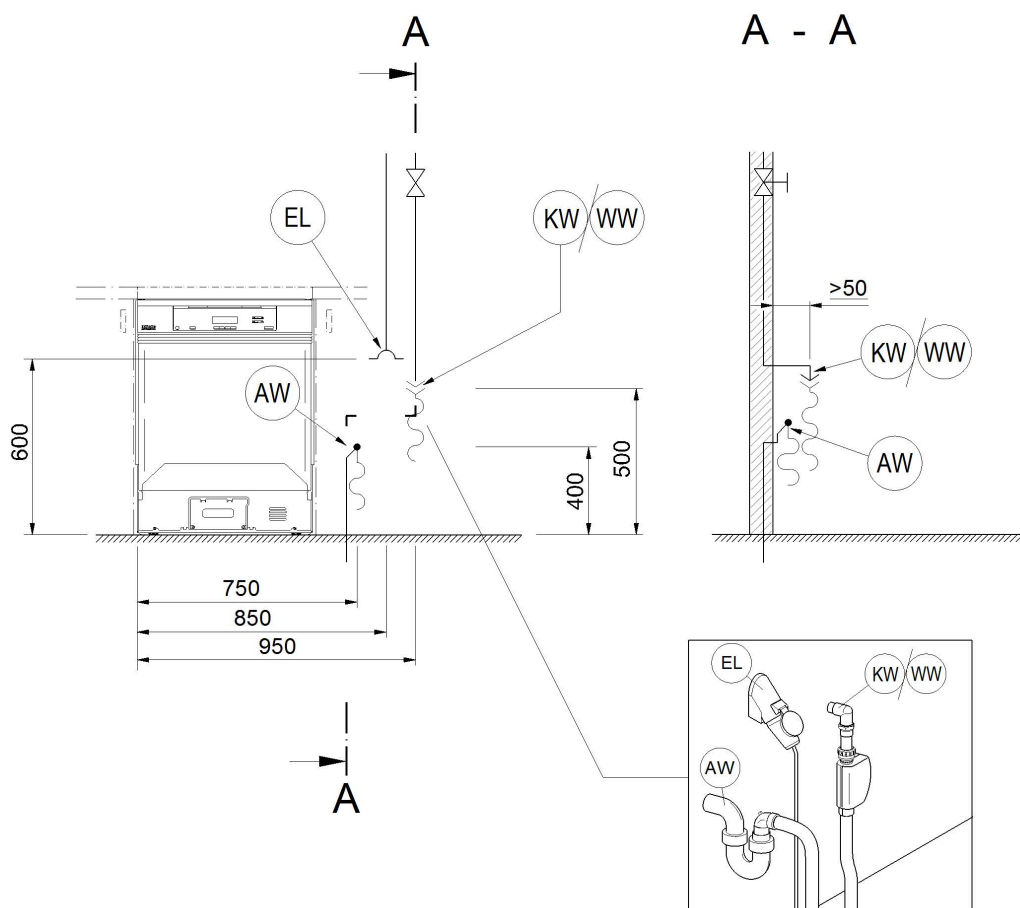
PG 8132-33 XXL dimensions



Connections at the back of the machine



On-site connections



KW/WW Connection to cold or hot water

AW Drain connection

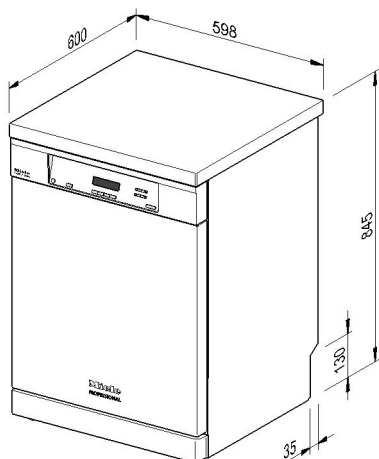
DS External dispensing

EL Electrical connection

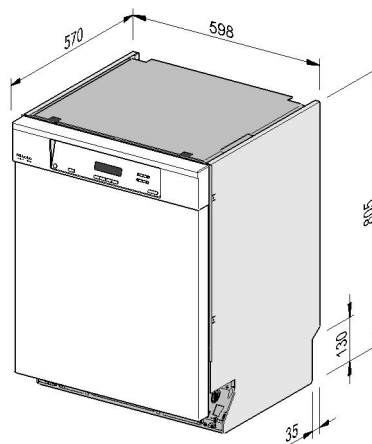
PA Equipotential bonding

Illustrations

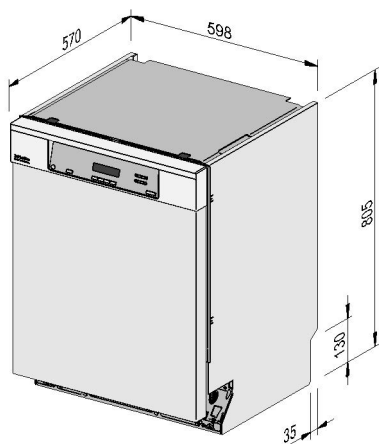
Machine versions



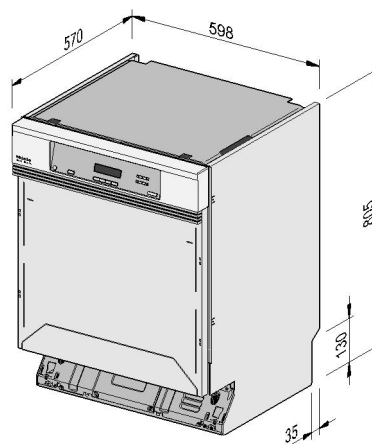
PG 8130 freestanding model



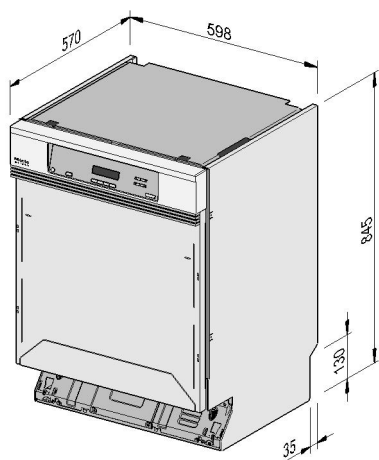
PG 8130 U



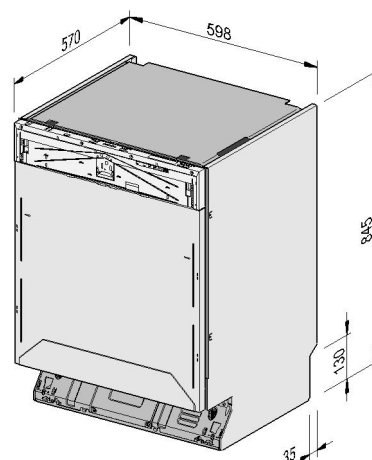
PG 8130 U/i



PG 8130i / PG 8131i



PG 8132 SCi XXL



PG 8133 SCVi XXL

Electrical connection for PG 8130

Voltage (standard delivered)	AC 230V/50Hz
Total rated load	3.1 kW
Fuse rating	1 x 15 A
Mains connection cable, min. cross-section	3 x 1.5 mm ²
Length of mains connection cable with plug SAA/3/25 Typ HPM 106/5	2.4 m

Voltage (convertible)	AC 230V/50Hz
Total rated load	2.3 kW
Fuse rating	1 x 10 A
Mains connection cable, min. cross-section	3 x 1.5 mm ²
Length of mains connection cable with plug SAA/3/25 Typ HPM 106/5	2.4 m

Electrical connection for PG 8131, PG 8132 and PG 8133

Voltage (standard delivered)	AC 230V/50Hz
Total rated load	2.3 kW
Fuse rating	1 x 10 A
Mains connection cable, min. cross-section	3 x 1.5 mm ²
Length of mains connection cable with plug SAA/3/25 Typ HPM 106/5	2.4 m

Voltage (convertible)	AC 230V/50Hz
Total rated load	5.3 kW
Fuse rating	1 x 25 A
Mains connection cable, min. cross-section	3 x 4 mm ²
Length of mains connection cable with plug SAA/3/25 Typ HPM 106/5	2.4 m

Water connection

Max. temperature	60 °C
Max. water hardness	6.5 mmol/l
	36 °dH
On-site water pressure	50 - 1000 kPa
Recommended flow pressure	200 kPa
On-site threaded union in accordance with AS 3688 (flat sealing)	3/4 inches
Length of cold water inlet hose	1.5 m

Technical data

Drain water

Drain water temperature	75 °C
Standard length of drain hose	1.5 m
Max. drainage length of drain hose	4.0 m
Max. drain pump head height from bottom edge of machine	1.0 m
Max. transient flow rate	16 l/min
Hose sleeves to be provided on site (ext. dia. x l)	22 x 30 mm
Internal diameter of drain hose	22 mm

Machine feet

Machine feet height adjustment	65 mm
Diameter of machine feet	30 mm
Insert for machine feet, size of thread	20 mm

Machine data

Height including lid PG 8130	845 mm
Building-under height PG 8130 / PG 8131	805 mm
Building-under height PG 8132 XXL / PG 8133 XXL	845 mm
Width PG 8130 freestanding model	600 mm
Width without lid	598 mm
Depth PG 8130 freestanding model	600 mm
Depth without lid	570 mm
Door height PG 8130 freestanding model	720 mm
Door height PG 8130-31	650 mm
Door height PG 8132-33 XXL	690 mm
Weight PG 8130 freestanding model	61.5 kg
Weight PG 8130 U	54.0 kg
Weight PG 8130i / PG 8131i	54.7 kg
Weight PG 8132 SCi XXL	56.2 kg
Weight PG 8133 SCVi XXL	56.0 kg
Floor load in operation	1000 N
Min. access width incl. transport pallet	670 mm
Min. access depth including transport pallet	690 mm
Min. access height including transport pallet	970 mm
Noise level in dB (A), sound power pressure LpA during cleaning and drying phases (ECO programme)	45 dB (A)

Ambient conditions

Permitted temperature range in operation	5 - 40 °C
Max. relative humidity up to 31 °C	80 %
Relative humidity, declining proportionally to 40 °C	50 %
Transport conditions - permitted temperature range	-20 - 60 °C
Transport conditions - permitted relative humidity	10 - 85 %
Transport conditions - permitted air pressure	500 - 1060 hPa
Max. installation altitude above sea level	2000 m



Miele Australia Pty. Ltd.

ACN 005 635 398

ABN 96 005 635 398

Melbourne:

1 Gilbert Park Drive

Knoxfield, VIC 3180

Telephone: 1300 731 411

service.prof@miele.com.au

www.miele-professional.com.au

info@miele-professional.com.au

Miele New Zealand Limited

IRD 98 463 631

Level 2, 10 College Hill

Freemans Bay

Auckland 1011

New Zealand

Telephone: 0800 4 MIELE

(0800 464 353)

www.miele-professional.com.au

info@miele-professional.com.au

Miele Global Headquarters

Germany

Miele & Cie. KG

Carl-Miele-Straße 29

33332 Gütersloh

Federal Republic of Germany

