

Before the first use

⚠ Before using the machine for the first time, ensure that it is correctly installed and connected. Please read the separate operating instructions supplied with the appliance.

When the washing machine is switched on for the first time with the ① button, the welcome screen ("Willkommen") will appear.

Setting the language and the time of day

- Set the display language and time of day that will appear in the display (see "Before using for the first time" in the operating instructions).

Messages

Two messages about removing the transit bars and preparing the washing machine for use will appear in the display.

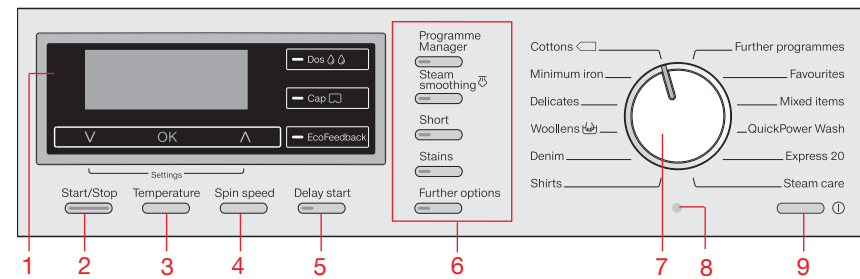
- Ensure the feet of the washing machine are aligned and the transit bars have been removed, and confirm the messages with the OK sensor.

Running the first programme

The TwinDos unit needs to be activated before running the first programme.

- Please see "TwinDos" in the operating instructions.
 - Turn on the tap.
 - Turn the programme selector to *Cottons*.
 - After the load appears in the display, the display changes to the standard display.
 - Touch the Dos ② sensor.
 - Select the Heavy degree of soiling setting with the ③ sensor and confirm your selection with the OK sensor.
 - Confirm the For white items option with the OK sensor.
 - Press the *Start/Stop* button.
 - Switch the washing machine off at the end of the programme.
- The TwinDos unit is now ready for use.

Operating the washing machine



1 Display with sensors

See points 10 to 15 for more information.

2 Start/Stop button

For starting the programme selected and cancelling a programme once it has started.

3 Temperature button

For selecting a temperature.

4 Spin speed button

For selecting the spin speed.

5 Delay start button

For selecting Delay start.

6 Extra option buttons

Various Extra options can be added to the wash programme.

7 Programme selector

For selecting a wash programme. For service technicians.

8 PC optical interface

For service technicians.

9 ① button

For switching the washing machine on and off. To save energy, the washing machine will switch off automatically 15 minutes after the end of the programme / Anti-crease phase or after being switched on if no other selection is made.

10 V sensor

Scrolls down the list to the next option or decreases a value.

11 OK sensor

Confirms the programme selected, a value set or opens a sub-menu.

12 ③ sensor

Scrolls up the list to the next option or increases a value.

13 ② Dos sensor

Switches on automatic detergent dispensing.

14 Cap sensor

Activates cap dosing via the detergent dispenser drawer.

15 EcoFeedback sensor

Provides information about the energy and water consumption of the programme.

Sensors 10 to 12 light up when the display can be operated via the sensors.

See "Operating the washing machine" for more information.

See "Operating the washing machine" for more information.

See "Operating the washing machine" for more information.

See "Operating the washing machine" for more information.

See "Operating the washing machine" for more information.

See "Operating the washing machine" for more information.

See "Operating the washing machine" for more information.

See "Operating the washing machine" for more information.

See "Operating the washing machine" for more information.

See "Operating the washing machine" for more information.

See "Operating the washing machine" for more information.

Washing

1. Preparing the laundry

- Empty all pockets.

⚠ Foreign objects (e.g. nails, coins, paper clips, etc.) can cause damage to garments and components in the machine.

- Sort the laundry by colour and by care label. Most garments have a textile care label in the collar or side seam.
- Pre-treat stains and badly soiled areas (see the booklet "Miele's guide to laundry care").

2. Selecting a programme

- Switch on the washing machine with the ① button.

Selecting a programme via the programme selector

- Turn the programme selector to the required programme.

The load for the programme selected will appear in the display. The standard display will then appear:

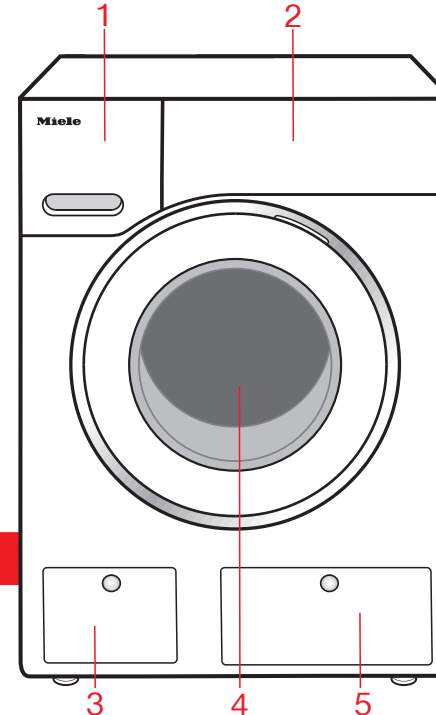
Selecting a programme using the programme selector at the "Further programmes" position and the display

■ Turn the programme selector to the "Further programmes" setting. Automatic plus appears in the display.

- Touch the V or ③ sensor until the programme you want appears in the display.

- Confirm the programme with the OK sensor.

The load for the programme selected will appear in the display. Preset programme parameters will be displayed, depending on the programme selected.



- 1 Detergent dispenser drawer
- 2 Control panel
- 3 Access to drain filters, pumps and emergency release
- 4 Door
- 5 Access panel for TwinDos containers

3. Loading the washing machine

Opening the door

- Reach under the door grip and pull the door open.
- Unfold the laundry and load loosely in the drum.

Closing the door

- Make sure that no items are caught between the door and the seal.

- Shut the door with a gentle swing.

4. Selecting programme settings

Selecting a temperature

- Press the *Temperature* button.
- Set the temperature you want with the V and ③ sensors and confirm your selection with the OK sensor.

Selecting a spin speed

- Press the *Spin speed* button.
- Set the spin speed you want with the V and ③ sensors and confirm your selection with the OK sensor.

Selecting Extra options

- Press the button for the option you want.

Switching on Delay start

The start of a programme can be delayed from 15 minutes up to 24 hours, allowing you to make use of night-time economy electricity rates, for example (see "Delay start" in the operating instructions).

5. Adding detergent

There are several options for adding detergent.

TwinDos

– Miele 2 Phase System

The optimum amount of UltraPhase 1 and UltraPhase 2 will be dispensed automatically according to the colour mix of the load.

- Press the *Dos* ② sensor.
- Use the V and ③ sensors to select the dosage mix (For white items or For coloured items) and confirm your selection with the OK sensor.

– Liquid detergent/Fabric softener

The most suitable agent will appear in the display with a tick (✓) beside it. If both the agents present in the containers are suitable (e.g. detergent for coloured items and fabric softener), then both agents will be selected.

- Confirm the option displayed with the OK sensor or select another detergent or fabric softener with the V and ③ sensors.

Detergent dispenser drawer

- Pull out the detergent drawer and add detergent to the compartments.

- Detergent for the pre-wash
- Detergent for the main wash, including Soak if selected
- Fabric softener, liquid starch or capsules

CapDosing

- Three different types of capsule are available:
- Fabric care (e.g. fabric softener)
 - Additives (e.g. detergent enhancers)
 - Detergent

See "Detergent" in the operating instructions for more information.

6. Starting the programme - the end of the programme

Starting the programme

- Press the flashing *Start/Stop* button. The door will lock (the ③ will appear in the display to show this) and the programme will start.

At the end of the programme

The door is still locked during the Anti-crease phase and the following will appear alternately in the display:

Anti-crease and ③ Press the Start/Stop button, then unload the drum

- Press the *Start/Stop* button. The door will be unlocked.
- Pull open the door.

Changing the programme sequence

- Remove the laundry.

⚠ Check that all items have been removed from the drum.

- Check the folds in the door seal for any small articles, e.g. buttons, which might be lodged there.

- Switch the washing machine off with the ① button.
- Close the door and remove any used capsules which may be in the detergent dispenser drawer.

Cancelling a programme

- Press the *Start/Stop* button. The following will appear in the display: Cancel programme
- Touch the OK sensor. The suds will be pumped away. Programme cancelled will appear in the display.
- Pull open the door.
- Remove the laundry.

Selecting another programme

- Close the door.
- Select the programme you want.
- Add detergent to the detergent dispenser drawer, if necessary.
- Press the *Start/Stop* button.

Changing a programme and settings

Programme

Once a programme has started, it is no longer possible to select a different programme.

Temperature/Spin speed

The temperature can be changed within the first five minutes, except in the *Cottons* programme. The spin speed can be changed right up to the start of the final spin.

- Press the *Temperature* or *Spin speed* button.
- Use the V and ③ and OK sensors to change the temperature and spin speed.

Extra options

It is possible to select or deselect the *Short* and *Water plus* Extra options up to five minutes after the programme has started.

It is not possible to make any changes to the programme or to cancel it if the safety lock has been activated.

Interrupting a programme

- Switch the washing machine off with the ① button.
- Switch the washing machine back on with the ① button to continue with the same programme.

Adding or removing laundry after a programme has started

- Press the *Start/Stop* button. The following will appear in the display: Cancel programme
- Scroll up or down the list with the V and ③ sensor to: Add laundry
- Touch the OK sensor. The programme will stop and the door will unlock.
- Pull open the door.
- Add or remove items.
- Close the door.
- Press the *Start/Stop* button. The programme will continue.

The door cannot be opened if:

- the suds temperature is above 55°C.
- the water is above a certain level.
- the programme has reached the *Spin* stage.

Programme chart

Programme	Load (in kg)	Temperature	Items	Extra options
Cottons	8.0	Cold to 90°C	Cottons, linens or cotton mix fabrics, e.g. table linen, towelling, underwear, T-shirts etc.	④, ⑤, ⑥, ⑦
Minimum iron	4.0	Cold to 60°C	Synthetic, mixed fibre and easy care cotton.	④, ⑤, ⑥, ⑦
Delicates	3.0	Cold to 60°C	Delicate garments made from synthetic fibre, mixed fibre, rayon and viscose.	④, ⑤, ⑥, ⑦
Woolens	2.0	Cold to 40°C	Machine-washable or hand-washable wool or wool blend fabric. If the care label does not specify a temperature, wash using the cold setting.	④, ⑤, ⑥, ⑦
Denim	3.0	Cold to 60°C	Textiles made from denim.	④, ⑤, ⑥, ⑦
Shirts	2.0	Cold to 60°C	Shirts and blouses made of cotton and mixed fibre.	④, ⑤, ⑥, ⑦
Favourite programmes	–	–	You can save your own customised wash programmes as favourite programmes under names of your choice. These will then be sorted alphabetically. Please see "Favourite programmes" in the operating instructions for more information.	–
Mixed items	–	–	A load consisting of various items with different garment care labels which is too small for a standard programme. You can choose from a list of 19 different items.	–
QuickPowerWash	5.0	40°C – 60°C	Moderately soiled garments which are also suitable for washing in the Cottons programme.	④, ⑤
Express 20	3.5	Cold to 40°C	Cotton garments that have hardly been worn or are only very lightly soiled.	④, ⑤, ⑥
Steam care	–	–	Reducing the amount of creasing in damp, freshly washed and spun cotton or linen garments. The garments must be suitable for drying in a tumble dryer ⑧ and suitable for ironing ⑨.	④

④ = Steam smoothing, ⑤ = Stains, ⑥ = Short, ⑦ = EcoFeedback. An explanation of the programmes at the *Further programmes* position can be found in the "Programme chart" in the operating instructions.

ProgrammeManager/Extra options

ProgrammeManager

The ProgrammeManager option can be used to customise the washing programmes to suit your requirements.

Intensive

For hard-wearing laundry that is very heavily soiled. Cleaning efficiency is increased through more intense mechanical action and the application of more heat energy.

ECO

This option reduces energy consumption whilst maintaining cleaning efficiency. This is achieved by increasing the wash duration and at the same time reducing the wash temperature selected.

Extra gentle

This option decreases mechanical action in order to reduce creasing. The laundry also undergoes a smoothing process at the end of the programme.

Extra quiet

This option reduces noise levels during the programme. Use this if you want to wash during quiet periods (for instance, when children are sleeping). The machine will activate the "Rinse hold" option and not spin. The programme duration is longer.

AllergoWash

This option should be used where high standards of hygiene are required. More energy is used to lengthen temperature holding times and more water is used to increase rinsing efficiency. The items must be suitable for drying in a tumble dryer and suitable for ironing.

Extra options

Extra options are selected and deselected via the relevant buttons and the display.

Steam smoothing

Steam is injected into the drum at the end of the wash process. Reducing the maximum load by 50% will give a better result. For steam smoothing to work properly there needs to be a certain amount of residual moisture still present in the laundry. The final spin speed is therefore adjusted accordingly. The garments must be suitable for drying in a tumble dryer and suitable for ironing.

Short

For light soiling with no visible staining. The wash duration is reduced.

Stains

In order to clean stained laundry more effectively, you can choose from a list of various types of stains. The wash programme will then adapt to the types of stains selected. You can select a maximum of three stains per wash cycle.

Further options

After pressing the button, more functions will appear in the display. See "Extra options" in the operating instructions for more information.

Detergent

Miele recommended detergents

Programmes	Miele UltraPhase 1/2	Miele Cap	Miele Cap	Miele Cap
Cottons	✓	–	ⓔ	ⓕ
Minimum iron	✓	–	ⓔ	ⓕ
Delicates	✓	–	ⓔ	–
Woolens	–	ⓐ	–	–
Denim	–	–	–	–
Shirts	✓	–	ⓔ	ⓕ
Favourite programmes	depending on the basic programme set			
Mixed items	✓	–	ⓔ	–
QuickPowerWash	✓	–	–	–
Express 20	✓	–	ⓔ	–
Steam care	–	–	–	–

✓ = Recommended; – = Not recommended
ⓐ = Sportswear; ⓑ = Down items; ⓐ = WoolCare; ⓑ = SilkCare; ⓔ = Fabric softener; ⓕ = Booster

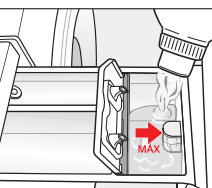
Dispensing fabric softener and liquid starch at the end of the programme

You can dispense fabric softener either by using automatic dispensing or via the detergent dispenser compartment.

Automatic dispensing

One of the automatic dispensing containers must be filled with fabric softener.
■ Touch the Dos sensor.
■ Activate the appropriate container. Fabric softener will be dispensed in the last rinse.

Manual dispensing



- Add the fabric softener or liquid starch to the compartment or insert the appropriate capsule. Do not exceed the maximum level mark.

It will be automatically dispensed in the final rinse. At the end of the programme a small amount of water remains in the fabric softener compartment.

If starching frequently, thoroughly clean the dispenser compartment, especially the siphon tube, regularly.

Cleaning and care

Cleaning the TwinDos system

The washing machine has a cleaning programme for cleaning the TwinDos system containers and the hoses inside the washing machine. Miele 2 Phase System cartridges do not need to be cleaned.

Cleaning the containers and hoses

Clean the container or containers and hoses every time you change the brand of liquid detergent or fabric softener or if the system has not been used for a long period of time (more than three months).

If the system has not been used for a long time, the detergent in the hoses can become viscous. The hoses could become blocked and would then need to be cleaned by a service technician.

- The quantity of the laundry.
- The water hardness level in your area. Check with your local water supplier if you do not know the hardness level in your area.

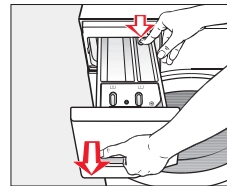
Hardness range	Hardness level
Soft	< 17 mg/L CaCO ₃
slightly hard	17 – 60 mg/L CaCO ₃
moderately hard	60 – 120 mg/L CaCO ₃
hard	120 – 180 mg/L CaCO ₃
very hard	> 180 mg/L CaCO ₃

- Switch on the washing machine and wait until the standard display lights up.
- Touch the V and A sensors at the same time until the following appears in the display: Language
- Touch the V sensor until Dispensing unit appears in the display.
- Confirm the setting with the OK sensor.
- Touch the V sensor until Maintenance appears in the display.
- Confirm the setting with the OK sensor.
- Touch the V or A sensor until the container (or containers) you want appears in the display and confirm this with the OK sensor.
- Follow the instructions in the display. After cleaning you can fill one or both containers with new liquid detergent and/or fabric softener.

Cleaning the detergent dispenser drawer

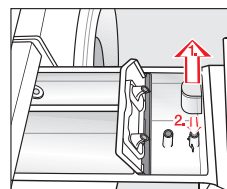
Washing at low temperatures and the use of liquid detergent can lead to a build-up of mould and bacteria in the detergent dispenser drawer.

- Clean the entire drawer at regular intervals for hygiene reasons, even if you are using the TwinDos system exclusively.



- Press down the release button and, at the same time, pull the drawer right out of the machine.
- Clean the detergent drawer with warm water.

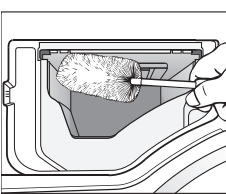
Cleaning the siphon and the fabric softener channel



- Clean the siphon tube in the same way.
- Refit the siphon.
- Clean the fabric softener channel using a brush and warm water.

⚠ Liquid starch can cause the siphon to become clogged. Make sure that you clean the siphon and siphon tube particularly thoroughly after using liquid starch a few times.

Cleaning the detergent dispenser drawer housing



- Use a bottle brush to remove detergent residues and limescale from the jets inside the detergent dispenser drawer housing.

Cleaning the drum (Hygiene info)

Washing at low temperatures and/or using liquid detergent can cause bacteria and unpleasant odours to build up in the washing machine. Use the Clean machine programme to clean the machine. Run this programme regularly or at the latest when the Hygiene info: Start a programme with a minimum temperature of 60°C message appears in the display.

Problem solving guide

To switch off the fault messages: Switch the washing machine off with the button. The messages will appear at the end of the programme and when the washing machine is switched on and need to be confirmed with the OK sensor.

Problem/Fault message	Possible cause and remedy
The display remains dark, and the Start/Stop button indicator light does not come on.	There is no power to the machine. ■ Check whether the mains plug is plugged in and switched on. ■ Check whether the fuse or circuit breaker has tripped. The washing machine has switched off automatically to save energy. ■ Switch it back on with the button. You are asked to enter a code. Access via a code has been activated. ■ Enter the code and confirm the entry. Deactivate the code if you do not wish this message to appear in the display the next time the machine is switched on.
The following appears in the display: Door lock	The door is not closed properly. The door lock could not engage. ■ Close the door again. ■ Start the programme again. If the fault message appears again, contact Miele.
The following appears in the display: Drain fault	The water outlet is blocked or restricted. The drain hose has been fixed too high. ■ Clean the drain filters and the pumps. ■ Check whether the maximum delivery height of 1 m has been exceeded.
The following appears in the display: Water intake fault	The water inlet is blocked or restricted. ■ Check whether the tap is turned on properly. ■ Check whether the inlet hose is kinked. ■ Check whether there is sufficient water pressure. The filter in the water inlet is blocked. ■ Clean the filter (see the operating instructions).
The following appears in the display: Technical fault F	There is a fault. ■ Restart the programme. If the fault message appears again, contact Miele.
The following appears in the display: Waterproof system reacted	The anti-flooding system has reacted. The washing machine is switched off. ■ Turn off the tap. ■ Call Miele.

Problem/Fault message	Possible cause and remedy
The following appears in the display at the end of the programme: Hygiene info: Start a programme with a minimum temperature of 60°C	A programme of at least 60°C has not been run for a long period of time. ■ In order to prevent bacteria and unpleasant odours building up in the machine, run the Clean machine programme using Miele dishwasher and washing machine cleaner or powder detergent.
The following appears in the display at the end of the programme: Insert a new cartridge or fill container 1 or Insert a new cartridge or fill container 2. Check the wash result	The TwinDos container (or containers) is empty. ■ Fill the container or containers with liquid detergent or fabric softener or replace the cartridge(s). ■ Check if the laundry is clean. There may not have been enough detergent used. ■ Wash the items again if necessary.
The following appears in the display at the end of the programme: Intensive recirculation system: Clean the filter and jet nozzle or remove foreign objects from the pump housing	The pumps are dirty. ■ Clean the pumps as described in "Problem solving guide - Opening the door in the event of a blocked drain outlet and/or power failure" in the operating instructions. ■ Start the programme again after cleaning the pumps. The jet in the top of the door ring is blocked with fluff. ■ Remove the fluff with your finger. Do not use any sharp or pointed tools to do this. ■ Start the programme again after cleaning the jet. If the fault message appears again, contact Miele. The washing machine can still be used but with reduced functionality.
Extra cooling appears in the display after a programme has been cancelled.	For safety reasons, the door cannot be opened if the suds temperature is higher than 55°C. ■ Wait until the temperature in the drum has decreased and the message has gone out in the display.
The following appears in the display: Door lock fault. Call Miele	The door lock has jammed. ■ Call Miele.

Quick Start Guide
Washing machine



These short instructions are not a substitute for the operating instructions supplied with the appliance. Please read the operating instructions supplied with your washing machine before using it for the first time and take note of the Warning and Safety instructions, as well as the full descriptions on how to use your appliance.