

## Before the first use

⚠ Before using the machine for the first time, ensure that it is correctly installed and connected.  
Please read the separate operating instructions supplied with the appliance.

When the washing machine is switched on for the first time with the ① button, the welcome screen ("Willkommen") will appear.

### Setting the language

You will be asked to select the language you require for the display.  
■ Touch the V or ^ sensor until the language you want appears in the display.  
■ Confirm the language with the OK sensor.

### Messages

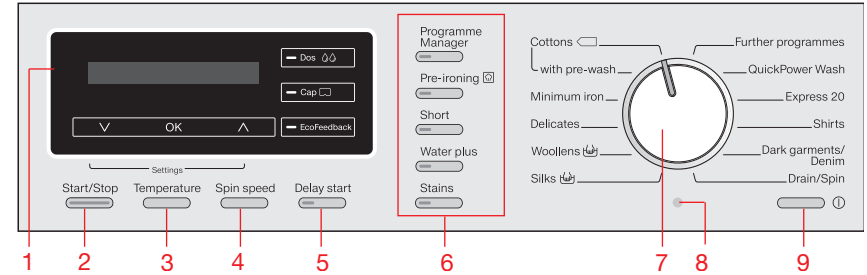
Two messages about removing the transit bars and preparing the washing machine for use will appear in the display.  
■ Ensure the feet of the washing machine are aligned and the transit bars have been removed, and confirm with the OK sensor.

### Running the first programme

The TwinDos unit needs to be activated before running the first programme.

- Please see "TwinDos" in the operating instructions.
  - Turn on the tap.
  - Turn the programme selector to *Cottons*. After the load appears in the display, the display changes to the standard display.
  - Touch the *Dos* sensor.
  - Select the Heavy degree of soiling setting with the ^ sensor and confirm your selection with the OK sensor.
  - Press the *Start/Stop* button.
  - Switch the washing machine off at the end of the programme.
- The TwinDos unit is now ready for use.

## Operating the washing machine



- 1 Display with sensors**  
See points 10 to 15 for more information.
- 2 Start/Stop button**  
For starting the programme selected and cancelling a programme once it has started.
- 3 Temperature button**  
For selecting a temperature.
- 4 Spin speed button**  
For selecting the spin speed.
- 5 Delay start button**  
For selecting Delay start.

- 6 Extra option buttons**  
Various Extra options can be added to the wash programme.
- 7 Programme selector**  
For selecting a wash programme.
- 8 PC optical interface**  
For service technicians.
- 9 ① button**  
For switching the washing machine on and off. To save energy, the washing machine will switch off automatically 15 minutes after the end of the programme / Anti-crease phase or after being switched on if no other selection is made.

- 10 V sensor**  
Scrolls down the list to the next option or decreases a value.
- 11 OK sensor**  
Confirms the programme selected, a value set or opens a sub-menu.
- 12 ^ sensor**  
Scrolls up the list to the next option or increases a value.
- 13 Dos sensor**  
Switches on automatic detergent dispensing.
- 14 Cap sensor**  
Activates cap dosing via the detergent dispenser drawer.
- 15 EcoFeedback sensor**  
Provides information about the energy and water consumption of the programme.

Sensors 10 to 12 light up when the display can be operated via the sensors.

### Washing environmentally and economically

- To get the most out of your machine, load the maximum dry load for the programme you are using.
- When smaller amounts of laundry are washed, the automatic load recognition system will reduce the amount of water and energy used.
- Use the *Express 20* programme for small, lightly soiled loads.
- Modern detergents enable washing at reduced temperatures (e.g. 20 °C). Use appropriate temperature settings for saving energy.
- For precise dispensing, use automatic detergent dispensing.
- Selecting the highest possible spin speed for the wash programme will save energy when drying in a tumble dryer afterwards.

## Washing

### 1. Preparing the laundry

- Empty all pockets.

⚠ Foreign objects (e.g. nails, coins, paper clips, etc.) can cause damage to garments and components in the machine.

- Sort the laundry by colour and by care label. Most garments have a textile care label in the collar or side seam.
- Pre-treat stains and badly soiled areas (see the booklet "Miele's guide to laundry care").

### 2. Selecting a programme

- Switch on the washing machine with the ① button.

#### Selecting a programme via the programme selector

- Turn the programme selector to the required programme.
- The load for the programme selected will appear in the display. This will then be replaced by the standard display.

#### Selecting a programme using the programme selector at the "Further programmes" position and the display

- Turn the programme selector to the Further programmes setting.
- Automatic plus appears in the display.

- Touch the V or ^ sensor until the programme you want appears in the display.
  - Confirm the programme with the OK sensor.
- The load for the programme selected will appear in the display. Preset programme parameters will be displayed, depending on the programme selected.

### 3. Loading the washing machine

#### Opening the door

- Reach under the door grip and pull the door open.
- Unfold the laundry and load loosely in the drum.

#### Closing the door

- Make sure that no items are caught between the door and the seal.
- Shut the door with a gentle swing.

### 4. Selecting programme settings

#### Selecting a temperature

- Press the *Temperature* button.
- Set the temperature you want with the V and ^ sensors and confirm your selection with the OK sensor.

#### Selecting a spin speed

- Press the *Spin speed* button.
- Set the spin speed you want with the V and ^ sensors and confirm your selection with the OK sensor.

#### Selecting Extra options

- Press the button for the option you want.

#### Switching on Delay start

The start of a programme can be delayed from 15 minutes up to 24 hours, allowing you to make use of night-time economy electricity rates, for example (see "Delay start" in the operating instructions).

### 5. Adding detergent

There are several options for adding detergent.

#### TwinDos

##### – Miele 2 Phase System

The optimum amount of UltraPhase 1 and UltraPhase 2 will be dispensed automatically according to the colour mix of the load.

- Press the *Dos* sensor.
- Use the V and ^ sensors to select the dosage mix (For white items or For coloured items) and confirm your selection with the OK sensor.

##### – Liquid detergent/Fabric softener

The most suitable agent will appear in the display with a tick (✓) beside it. If both the agents present in the containers are suitable (e.g. detergent for coloured items and fabric softener), then both agents will be selected.

- Confirm the option displayed with the OK sensor or select another detergent or fabric softener with the V and ^ sensors.

#### Detergent dispenser drawer

- Pull out the detergent drawer and add detergent to the compartments.



- Detergent for the pre-wash
- Detergent for the main wash, including Soak if selected
- Fabric softener, liquid starch or capsules

#### CapDosing

- Three different types of capsule are available:
- Fabric care (e.g. fabric softener)
- Additives (e.g. detergent enhancers)
- Detergent

See "Detergent" in the operating instructions for more information.

### 6. Starting the programme - the end of the programme

#### Starting the programme

Press the flashing *Start/Stop* button. The door will lock (the 9/4 will appear in the display to show this) and the programme will start.

#### At the end of the programme

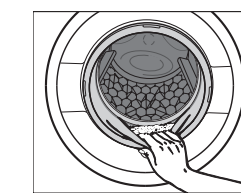
The door is still locked during the Anti-crease phase and the following will appear alternately in the display:

Anti-crease/Finish and

Press *Start/Stop*

- Press the *Start/Stop* button. The door will be unlocked.
- Pull open the door.
- Remove the laundry.

⚠ Check that all items have been removed from the drum.



- Switch the washing machine off with the ① button.
- Close the door and remove any used capsules which may be in the detergent dispenser drawer.

## Changing the programme sequence

### Cancelling a programme

Press the *Start/Stop* button. The following will appear in the display:

Cancel programme

■ Touch the OK sensor.

The suds will be pumped away. Prog. cancelled will appear in the display.

- Pull open the door.
- Remove the laundry.

### Selecting another programme

- Close the door.
- Select the programme you want.
- Add detergent to the detergent dispenser drawer, if necessary.
- Press the *Start/Stop* button.

### Changing a programme and settings

#### Programme

After the start of a programme, it is no longer possible to select a different programme.

#### Temperature/Spin speed

The temperature can be changed within the first five minutes, except in the *Cottons* programme. The spin speed can be changed right up to the start of the final spin.

- Press the *Temperature* or *Spin speed* button.
- Use the ^ or V and OK sensors to change the temperature and spin speed.

#### Extra options

It is possible to select or deselect the *Short* and *Water plus* Extra options up to five minutes after the programme has started.

It is not possible to make any changes to the programme or to cancel it if the safety lock has been activated.

### Interrupting a programme

- Switch the washing machine off with the ① button.
- Switch the washing machine back on with the ① button to continue with the same programme.

### Adding or removing laundry after a programme has started

- Press the *Start/Stop* button.
- The following will appear in the display: Cancel programme
- Scroll up or down the list with the ^ or V sensor to: Add laundry
- Touch the OK sensor.
- The programme will stop and the door will unlock.
- Pull open the door.
- Add or remove items.
- Close the door.
- Press the *Start/Stop* button.
- The programme will continue.

#### The door cannot be opened if:

- the suds temperature is above 55°C.
- the water is above a certain level.
- the programme has reached the *Spin* stage.

## Programme chart

Programme	Load (in kg)	Temperature	Items	Extra options
Cottons	8.0	Cold to 90°C	Cottons, linens or cotton mix fabrics, e.g. table linen, towelings, underwear, T-shirts etc.	Ⓐ, Ⓑ, Ⓒ, Ⓓ, Ⓔ
Minimum iron	4.0	Cold to 60°C	Synthetic, mixed fibre and easy care cotton.	Ⓐ, Ⓑ, Ⓒ, Ⓓ, Ⓔ
Delicates	3.0	Cold to 60°C	Delicate garments made from synthetic fibre, mixed fibre, rayon and viscose.	Ⓐ, Ⓑ, Ⓒ, Ⓓ, Ⓔ
Woolens	2.0	Cold to 40°C	Machine-washable or hand-washable wool or wool blend fabric. If the care label does not specify a temperature, wash using the cold setting.	Ⓑ
Silks	1.0	Cold to 30°C	Silks and other hand-washable fabrics with no wool content, e.g. satin, lace and silk.	Ⓑ, Ⓒ
QuickPowerWash	5.0	40°C to 60°C	Moderately soiled garments which are also suitable for washing in the Cottons programme.	Ⓐ, Ⓑ, Ⓒ, Ⓓ, Ⓔ
Express 20	3.5	Cold to 40°C	Cotton garments that have hardly been worn or are only very lightly soiled.	Ⓐ, Ⓑ, Ⓒ, Ⓓ, Ⓔ
Shirts	2.0	Cold to 60°C	Shirts and blouses made of cotton and mixed fibre.	Ⓐ, Ⓑ, Ⓒ, Ⓓ, Ⓔ
Dark garments/ Denim	3.0	Cold to 60°C	Black and dark garments made from cotton, mixed fibres and denim.	Ⓐ, Ⓑ, Ⓒ, Ⓓ, Ⓔ
Drain/Spin	-	-	Drain only: Select 0 rpm for the spin speed.	

Ⓐ = Pre-wash; Ⓑ = Pre-ironing; Ⓒ = Short; Ⓓ = Water plus; Ⓔ = Stains  
An explanation of the programmes at the Further programmes position can be found in the "Programme chart" in the operating instructions.



ProgrammeManager/Extra options

ProgrammeManager

The ProgrammeManager option can be used to customise the washing programmes to suit your requirements.

Intensive

For hard-wearing laundry that is very heavily soiled. Cleaning efficiency is increased through more intense mechanical action and the application of more heat energy.

ECO

This option reduces energy consumption whilst maintaining cleaning efficiency. This is achieved by increasing the wash duration and at the same time reducing the wash temperature selected.

Extra gentle

This option decreases mechanical action in order to reduce creasing.

Extra quiet

This option reduces noise levels during the programme. Use this if you want to wash during quiet periods (for instance, when children are sleeping). The machine will activate the "Rinse hold" option and not spin. The programme duration is longer.

AllergoWash

This option should be used where high standards of hygiene are required. More energy is used to lengthen temperature holding times and more water is used to increase rinsing efficiency. The items must be suitable for drying in a tumble dryer and suitable for ironing.

Detergent

Extra options

Extra options are selected and deselected via the relevant buttons and the display.

Pre-ironing

In order to reduce creasing, the laundry undergoes a smoothing process at the end of the programme. Reducing the maximum load by 50% will give a better result. Please note the load information in the display. Small loads give a better result. The garments must be suitable for drying in a tumble dryer and suitable for ironing.

Short

For light soiling with no visible staining. The wash duration is reduced.

Water plus

The water level in the main wash and the rinses will be increased if the Water plus Extra option is selected. You can select other functions for the Water plus button. These are described in "Settings".

Stains

In order to clean stained laundry more effectively, you can choose between 7 different types of stain. The wash programme will then adapt to the type of stain selected. You can select one stain per wash cycle.

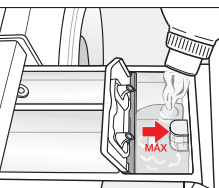
Automatic dispensing

One of the automatic dispensing containers must be filled with fabric softener. ■ Touch the Dos sensor. ■ Activate the appropriate container. Fabric softener will be dispensed in the last rinse.

Dispensing fabric softener and liquid starch at the end of the programme

You can dispense fabric softener either by using automatic dispensing or via the detergent dispenser compartment.

Manual dispensing



- Add the fabric softener or liquid starch to the compartment or insert the appropriate capsule. Do not exceed the maximum level mark.

It will be automatically dispensed in the final rinse. At the end of the programme a small amount of water remains in the fabric softener compartment.

If starching frequently, thoroughly clean the dispenser compartment, especially the siphon, regularly.

fold here

Cleaning and care

The right amount to dispense will depend on the following:

- The soiling level of the laundry.

Lightly soiled:  
No visible dirt or stains. Possibly slight body odour.

Normally soiled:  
Visibly dirty and/or just a few slight stains.

Heavily soiled:  
Soiling and/or stains clearly visible.

- The quantity of the laundry.
- Check with your local water supplier if you do not know the hardness level in your area.

Cleaning the TwinDos system

The washing machine has a cleaning programme for cleaning the TwinDos system containers and the hoses inside the washing machine.

The TwinDos containers (optional accessory) are required to carry out cleaning.

If the system has not been used for a long time (more than two months), the detergent in the hoses can become viscous. The hoses could become blocked and would then need to be cleaned by a service technician. Clean the TwinDos system every time you change brand of liquid detergent or fabric softener or if the system has not been used for a long period of time.

Starting the maintenance programme

The maintenance programme is located in the Settings menu under TwinDos. ■ Follow the instructions in the display and refer to the relevant section in the operating instructions.

After cleaning you can fill one or both containers with new liquid detergent and/or fabric softener.

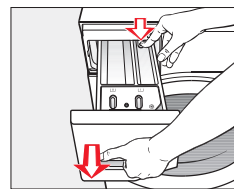
Cleaning the compartment

- Detergent residue can cause clogging.
- Use a damp cloth to clean the compartment interior when you change the cartridge or container.

Cleaning the detergent dispenser drawer

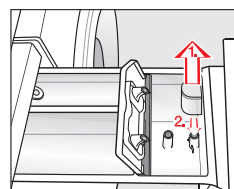
Washing at low temperatures and the use of liquid detergent can lead to a build-up of mould and bacteria in the detergent dispenser drawer.

- Clean the entire drawer at regular intervals for hygiene reasons, even if you are using the TwinDos system exclusively.



- Press down the release button and, at the same time, pull the drawer right out of the machine.
- Clean the detergent dispenser drawer with warm water.

Cleaning the siphon and the fabric softener channel

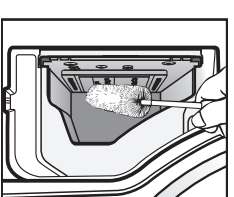


- Clean the siphon tube in the same way.
- Refit the siphon.



Liquid starch can cause the siphon to become clogged. Make sure that you clean the siphon and siphon tube particularly thoroughly after using liquid starch a few times.

Cleaning the detergent dispenser drawer housing



- Use a bottle brush to remove detergent residues and limescale from the jets inside the detergent dispenser drawer housing.

Cleaning the drum (Hygiene info)

Washing at low temperatures and/or using liquid detergent can cause bacteria and unpleasant odours to build up in the washing machine. Use the Clean machine programme to clean the machine. Run this programme regularly or at the latest when the Hygiene info message appears in the display.

Problem solving guide

To switch off the fault messages: Switch the washing machine off with the button. The messages will appear at the end of the programme and when the washing machine is switched on and need to be confirmed with the OK sensor.

Problem/Fault message

The display remains dark, and the Start/Stop button indicator light does not come on.

Possible cause and remedy

- There is no power to the machine.
- Check whether the mains plug is plugged in and switched on.
- Check whether the fuse or circuit breaker has tripped.
- The washing machine has switched off automatically to save energy.
- Switch it back on with the button.

The following appears in the display:

- Service. Door locked

The following appears in the display:

- Check drainage. See

The following appears in the display:

- Water intake. See

The following appears in the display:

- Service. Waterproof syst.

The following appears in the display:

- Service. Fault F

The following appears in the display:

- Hygiene info

The door is not closed properly. The door lock could not engage.

- Close the door again.
- Start the programme again. If this fault message continues to appear in the display, contact Miele.

The water outlet is blocked or restricted. The drain hose has been fixed too high.

- Clean the drain filter and the drain pump.
- Check whether the maximum delivery height of 1 m has been exceeded.

The water inlet is blocked or restricted.

- Check whether the tap is turned on properly.
- Check whether the inlet hose is kinked.
- Check whether there is sufficient water pressure.

The filter in the water inlet is blocked.

- Clean the filter (see the operating instructions).

The water protection system has reacted. The washing machine is switched off.

- Turn off the tap.
- Call Miele.

There is a fault.

- Restart the programme. If this fault message continues to appear in the display, contact Miele.

A programme of at least 60°C has not been run for a long period of time.

- In order to prevent bacteria and unpleasant odours building up in the machine, run the Clean machine programme using Miele dishwasher and washing machine cleaner or powder detergent.

Problem/Fault message

The following appears in the display:

- Check filter + jet

Possible cause and remedy

- The pumps are dirty.
- Clean the pumps as described in "Problem solving guide - Opening the door in the event of a blocked drain outlet and/or power failure" in the operating instructions.
- Start the programme again after cleaning the pumps.
- The jet in the top of the door ring is blocked with fluff.
- Remove the fluff with your finger. Do not use any sharp or pointed tools to do this.
- Start the programme again after cleaning the jet.

If the fault message appears again, contact Miele. The washing machine can still be used but with reduced functionality.

Extra cooling appears in the display after a programme has been cancelled.

The following appears in the display:

- Service. Door locked

The following appears in the display at the end of the programme:

- Check detergent

The following appears in the display at the end of the programme:

- Container 1 empty

or

- Container 2 empty

or

- Cont. 1+2 empty

- The TwinDos container (or containers) is empty.
- Fill the container or containers with liquid detergent or fabric softener or replace the cartridge(s).
- Check if the laundry is clean. There may not have been enough detergent used.
- Wash the items again if necessary.

Quick Start Guide  
Washing machine



These short instructions are not a substitute for the operating instructions supplied with the appliance. Please read the operating instructions supplied with your washing machine before using it for the first time and take note of the Warning and Safety instructions, as well as the full descriptions on how to use your appliance.