

Before the first use

⚠ Before using the machine for the first time, ensure that it is correctly installed and connected. Please read the separate operating instructions supplied with the appliance.

For safety reasons, spinning is not possible until the machine has been prepared for use for the first time. To activate the spinning function, you must run a wash programme without laundry and without detergent.

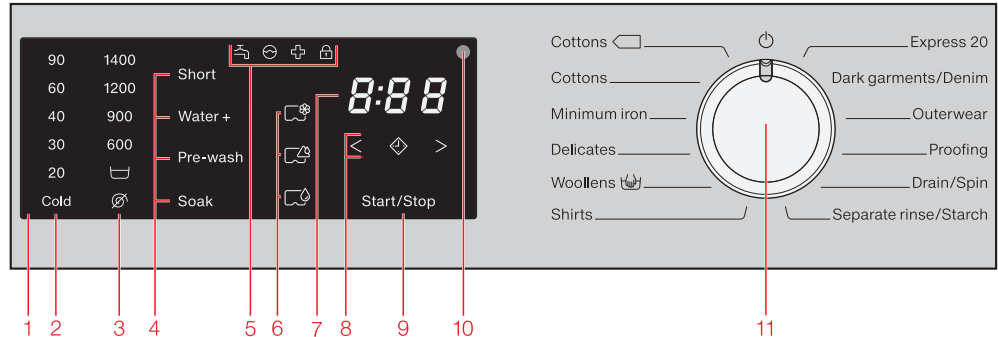
Using detergent could result in an excessive build-up of foam.

This also activates the ball valve. The ball valve prevents detergent escaping from the suds container into the sump during a wash programme, thus making maximum use of the detergent.

**Running the first programme**  
■ Turn on the tap.  
■ Turn the programme selector to *Cottons*. The washing machine is now switched on and in the control panel, the temperature 60°C lights up.  
■ Touch the *Start/Stop* sensor. The programme will start and the symbol lights up in the control panel.

**After the end of the programme**  
The symbol lights up in the control panel; 0:00 appears in the time display and the drum occasionally rotates.  
■ Touch the *Start/Stop* sensor. The door will be unlocked.  
■ Reach under the door grip and pull the door open.  
■ When the programme has ended, turn the programme selector to .  
**Note:** For safety reasons close the door.

Operating the washing machine



- 1 Control panel**
- 2 Temperature sensor** for selecting the temperature
- 3 Spin speed sensor** for selecting the spin speed
- 4 Extra options sensors** Various Extras can be added to the wash programme.
- 5 Indicator lights** = Fault with the water inlet or drainage  
 = Excess detergent was used  
 = Hygiene information  
 = Door of the washing machine is locked
- 6 CapDosing sensors**  
 = Fabric care (e.g. fabric conditioner)  
 = Additives (e.g. detergent enhancers)  
 = Detergent (for the main wash only)
- 7 Time display** After the programme has started, the programme duration will appear in the display in hours and minutes.
- 8 Sensor controls** < > for the Delay start function
- 9 Start/Stop sensor** Touching the Start/Stop sensor starts the selected programme or cancels a programme that has already been started. The sensor flashes slowly as soon as it is possible for a programme to be started and then lights up constantly after the programme has started.
- 10 Optical interface** for service technicians
- 11 Programme selector** for selecting programmes and for switching off. The washing machine is switched on by selecting a programme, and switched off by turning the programme selector to the position.

**Washing environmentally and economically**

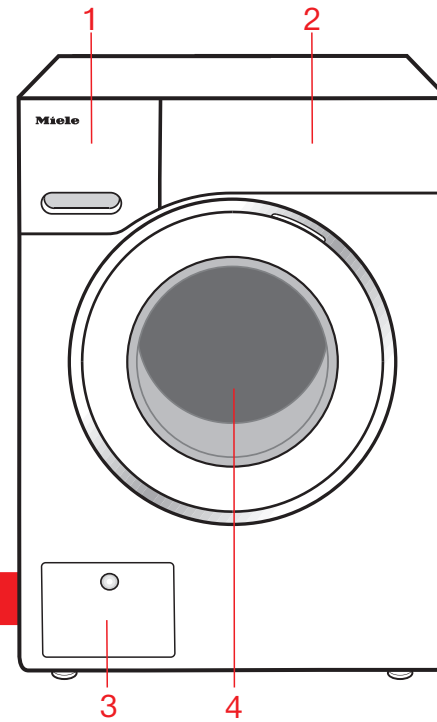
- To make the most out of your machine, load the maximum dry load for the programme you are using.
- When smaller amounts of laundry are washed, the automatic load recognition system will reduce the amount of water and energy used.
- Use the *Express 20* programme for small, lightly soiled loads.
- Modern detergents enable washing at reduced temperatures (e.g. 20°C). Use appropriate temperature settings for saving energy.
- Reduce the amount of detergent with smaller loads (approx. 1/3 less than the amount recommended can be used when washing a half load).
- Selecting the highest possible spin speed for the wash programme will save energy when drying in a tumble dryer afterwards.

Washing

- 1. Preparing the laundry**
  - Empty all pockets.
  - ⚠ Foreign objects (e.g. nails, coins, paper clips, etc.) can cause damage to garments and components in the machine.
- Sort the laundry by colour and by care label. Most garments have a textile care label in the collar or side seam.
- Pre-treat stains and badly soiled areas (see the booklet "Miele's guide to laundry care").

2. Loading the washing machine

- Opening the door**
  - Reach under the door grip and pull the door open.
  - Unfold the laundry and load loosely in the drum.
- Closing the door**
  - Make sure that no items are caught between the door and the seal.
  - Shut the door with a gentle swing.



- 1 Detergent dispenser drawer**
- 2 Control panel**
- 3 Access to drain filter, drain pump and emergency release**
- 4 Door**

**3. Selecting a programme**  
The washing machine is switched on by turning the programme selector to a wash programme.

**Programme selection**

- Turn the programme selector to the required programme.

The likely wash time is shown in the time display and the pre-set temperature and spin speed light up in the control panel.

**Selecting a temperature/spin speed**  
The wash programme's pre-set temperature and spin speed light up brightly. The choice of temperatures and spin speeds selectable for the wash programme light up dimly.

1 1400  
60 1200  
40 900  
30 600  
20  
Cold

**Selecting Extra options**  
The selection of Extras available for the wash programme lights up dimly.

Short  
Water +  
Pre-wash  
Soak

**Useful tip:** You can select multiple Extras for a wash programme.

WASHING

**4. Adding detergent**  
There are several options for adding detergent.

**Detergent dispenser drawer**

- Pull out the detergent drawer and add detergent to the compartments.

- Detergent for the pre-wash
- Detergent for the main wash, including Soak if selected
- Fabric softener, liquid starch or capsules

- CapDosing**  
Three different types of capsules are available:
- Fabric care (e.g. fabric conditioner)
  - Additives (e.g. detergent enhancers)
  - Detergent

See "Detergent" in the operating instructions for more information.

**5. Starting the programme**  
■ Touch the flashing *Start/Stop* sensor. The door will lock (the symbol will appear in the control panel) and the programme will start.

**6. At the end of the programme**  
The time display shows 0:00. The symbol will remain lit up in the control panel. The door is locked in the anti-crease phase.  
■ Touch the *Start/Stop* sensor.  
■ The door unlocks and the symbol in the control panel goes out.  
■ Pull open the door.  
■ Remove the laundry.

⚠ Check that all items have been removed from the drum.

■ Check the folds in the door seal for any small articles, e.g. buttons, which might be lodged there.

- Turn the programme selector to the position. This switches the washing machine off.
- If applicable, remove the used capsule from the detergent dispenser drawer.
- Close the door. Otherwise there is a danger of objects being placed inadvertently in the drum. If these remain unnoticed and were washed in the next load, they could damage the laundry. An open door is also a danger to pets and children.

Changing the programme sequence

**Changing a programme or adding/removing laundry**

After the successful start of a programme it is no longer possible to select a different programme. Once a programme has started it is no longer possible to open the door. If you would like to change the programme or add/remove laundry, you have to cancel the programme.

**Cancelling a programme**  
You can cancel a programme at any time after it has started.  
■ Touch the *Start/Stop* sensor. The water is pumped away and the time display changes to 0:00. As soon as the symbol in the control panel goes out, the programme has been cancelled and the door can be opened.

**Selecting a different programme after cancelling the programme**  
■ Open the door.  
■ Close the door.  
■ Check that there is still detergent in the dispenser drawer. Add more detergent if necessary.  
■ Turn the programme selector to the programme you want and start it by touching the *Start/Stop* sensor.

**Removing laundry after cancelling the programme**  
If you want to remove the laundry when it is dripping wet:  
■ Open the door.  
■ Remove the laundry.

If you want to remove the laundry after it has been spun (damp):  
■ Open the door.  
■ Close the door.  
■ Turn the programme selector to *Drain/Spin*.  
**Useful tip:** Select an appropriate spin speed.  
■ Touch the *Start/Stop* sensor. The laundry is spun and can be removed damp after spinning.

**Interrupting a programme**  
■ Turn the programme selector to the position. The washing machine switches off.  
■ To continue: turn the programme selector to the position of the wash programme that was started.  
**Useful tip:** If -0- appears in the time display, the programme selector is in the incorrect position.

Programme chart

CHANGING THE PROGRAMME SEQUENCE			
Programme	Load (in kg)	Temperature	Extras
<b>Cottons</b>	8.0	60°C/40°C	
<b>Cottons</b>	8.0	Cold to 90°C	
<b>Minimum iron</b>	3.5	Cold to 60°C	
<b>Delicates</b>	2.0	Cold to 40°C	
<b>Woollens</b>	2.0	Cold to 40°C	
<b>Shirts</b>	3.5	Cold to 60°C	
<b>Express 20</b>	3.0	Cold to 40°C	
<b>Dark garments/ Denim</b>	2.5	Cold to 60°C	
<b>Outerwear</b>	2.5	Cold to 40°C	
<b>Proofing</b>	2.5	40°C	
<b>Drain/Spin</b>	8.0		
<b>Separate rinse/ Starch</b>	8.0		

Ⓐ = Short; Ⓑ = Water plus; Ⓒ = Pre-wash; Ⓓ = Soak



Delay start/Extra options

Delay start

With Delay start you can delay the start of a programme from 30 minutes up to a maximum of 24 hours. This allows you to make use of night-time economy electricity rates, for example.

Selecting Delay start

- Select the programme required.



- Touch the < or > sensor repeatedly until the required delayed start time appears in the time display.
- For less than 10 hours, the Delay start time changes in increments of 30 minutes.
- For more than 10 hours, the Delay start time changes in increments of 1 hour.
- Touch the flashing *Start/Stop* sensor. The Delay start process starts and counts down in the time display.
- Useful tip:** Delay start cannot be selected with Drain/Spin or Proofing.

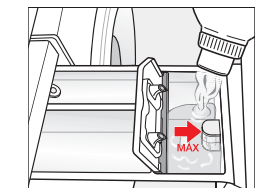
Detergent

Miele recommended detergents

Programme	Miele UltraWhite	Miele UltraColor	Miele Cap	Miele Cap	Miele Cap
Cottons	✓	✓	–	ⓔ	ⓕ
Cottons	✓	✓	–	ⓔ	ⓕ
Minimum iron	–	✓	–	ⓔ	ⓕ
Delicates	–	✓	–	ⓔ	–
Woolens	–	–	ⓐ, ⓓ	–	–
Shirts	✓	✓	–	ⓔ	ⓕ
Express 20	–	✓	–	ⓔ	–
Dark garments/ Denim	–	✓	–	ⓔ	–
Outerwear	–	–	–	–	–
Drain/Spin	–	–	–	–	–
Separate rinse/ Starch	–/–	–/–	–/–	ⓔ/–	–/–

✓ = Recommended; – = Not recommended  
ⓐ = Sportswear; ⓔ = Down Items; ⓐ = WoolCare; ⓓ = SilkCare; ⓔ = Fabric Softener; ⓕ = Booster

Dispensing fabric softener and liquid starch at the end of the programme



- Add the fabric softener or liquid starch to the compartment or insert the appropriate capsule. **Do not exceed the maximum level mark.** It will be automatically dispensed in the final rinse. At the end of the programme a small amount of water remains in the fabric softener compartment.

If starching frequently, thoroughly clean the dispenser compartment, especially the siphon, regularly.

Adding fabric softener or liquid starch separately

- Prepare the starch in accordance with the manufacturer's instructions on the packaging. When adding fabric softener separately, activate the *Water plus* Extra.
- Add fabric softener to the compartment or insert the appropriate capsule.
  - Add liquid starch to the compartment and powder or viscous starch to the compartment.
  - Select the *Separate rinse/Starch* programme.
  - Change the spin speed if necessary.
  - Activate the Cap sensor if using a capsule.
  - Touch the *Start/Stop* sensor.

Cleaning and care

The right amount to dispense will depend on the following:

- The soiling level of the laundry.

Lightly soiled:  
No visible dirt or stains. Possibly slight body odour.

Normally soiled:  
Visibly dirty and/or just a few slight stains.

Heavily soiled:  
Soiling and/or stains clearly visible.

- The quantity of the laundry.
- Check with your local water supplier if you do not know the hardness level in your area.

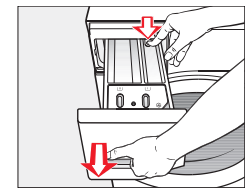
Cleaning the drum (Hygiene info)

Washing at low temperatures and/or using liquid detergent can cause bacteria and unpleasant odours to build up in the washing machine. Use the Cottons 90°C programme to clean the machine. This should be done at the latest when the indicator light comes on.

Cleaning the detergent dispenser drawer

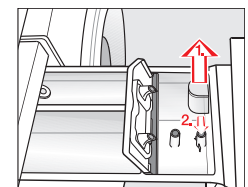
Washing at low temperatures and the use of liquid detergent can lead to a build-up of mould and bacteria in the detergent dispenser drawer.

- For hygiene reasons, clean the entire drawer at regular intervals.

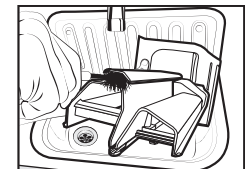


- Press down the release button and, at the same time, pull the drawer right out of the machine.
- Clean the detergent drawer with warm water.

Cleaning the siphon tube and the fabric softener channel



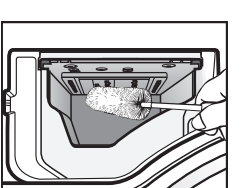
- Clean the siphon tube in the same way.
- Refit the siphon.



- Clean the fabric softener channel using a brush and warm water.

Liquid starch can cause the siphon to become clogged. Make sure that you clean the siphon and siphon tube particularly thoroughly after using liquid starch a few times.

Cleaning the detergent dispenser drawer housing



- Use a bottle brush to remove detergent residues and limescale from the jets inside the detergent dispenser drawer housing.

Problem solving guide

To switch off the fault messages: Switch the washing machine off by turning the programme selector to the position. The messages will appear at the end of the programme and when the washing machine is switched on and need to be confirmed with the OK sensor.

The control panel remains dark.

There is no power to the machine.

- Check whether the mains plug is plugged in and switched on.
- Check whether the circuit breaker has tripped.

The washing machine has switched off automatically to save energy.

- Switch the washing machine on again by turning the programme selector.

*F* and *34* appear alternately in the time display.

The fault indicator light lights up, *F* and *10* appear alternately in the time display and the buzzer sounds.

The water inlet is blocked or restricted.

- Check whether the tap is turned on properly.
- Check whether the inlet hose is kinked.
- Check whether there is sufficient water pressure.

The filter in the water inlet is blocked.

- Clean the filter (see the operating instructions).

The water outlet is blocked or restricted. The drain hose has been fixed too high.

- Clean the drain filter and the drain pump.
- The maximum drain height is 1 m.

The fault indicator light lights up, *F* and *138* appear alternately in the time display and the buzzer sounds.

The water protection system has reacted. The washing machine is switched off.

- Turn off the tap.
- Call Miele.

There is a fault.

- Disconnect the washing machine from the mains electricity supply, either by switching it off at the wall socket and withdrawing the plug, or by disconnecting it at the circuit breaker.

- Wait at least 2 minutes before reconnecting the washing machine to the mains electricity supply.
  - Then switch the washing machine on again.
  - Restart the programme.
- If the fault message appears again, contact Miele.

Problem/Fault message

**The indicator light lights up.**

Excessive foam has built up during washing.

- Use less detergent next time and follow the manufacturer's instructions on dosage given on the packaging.

**The indicator light lights up.**

A programme using a temperature above 60°C has not been run for a long period of time.

- In order to prevent bacteria and unpleasant odours building up in the machine, run the Cottons 90°C programme using Miele Dishwasher and Washing Machine Cleaner or powder detergent.

**The door cannot be pulled open during a programme.**

The drum is locked during a programme.

- Touch the *Start/Stop* sensor and cancel the programme.

The programme is cancelled, the door unlocks and you can pull it open.

There is still water in the drum and the machine is unable to drain.

- Clean the drain filter and the drain pump (see the operating instructions).

**After the programme is cancelled, flashing bars appear in the time display.**

For safety reasons, the door cannot be opened if the suds temperature is higher than 55°C.

- Wait until the temperature in the drum has decreased and the bars have stopped flashing in the display.

*F* and *35* appear alternately in the time display.

The door lock has jammed.

- Call Miele.

Quick Start Guide Washing machine



These short instructions are not a substitute for the operating instructions supplied with the appliance. Please read the operating instructions supplied with your washing machine before using it for the first time and take note of the Warning and Safety instructions, as well as the full descriptions on how to use your appliance.