

Before the first use

Before using the machine for the first time, ensure that it is correctly installed and connected. Please read the separate operating instructions supplied with the appliance.

For safety reasons, spinning is not possible until the machine has been prepared for use for the first time. To activate the spinning function, you must run a wash programme without laundry and without detergent.

Using detergent could result in an excessive build-up of foam.

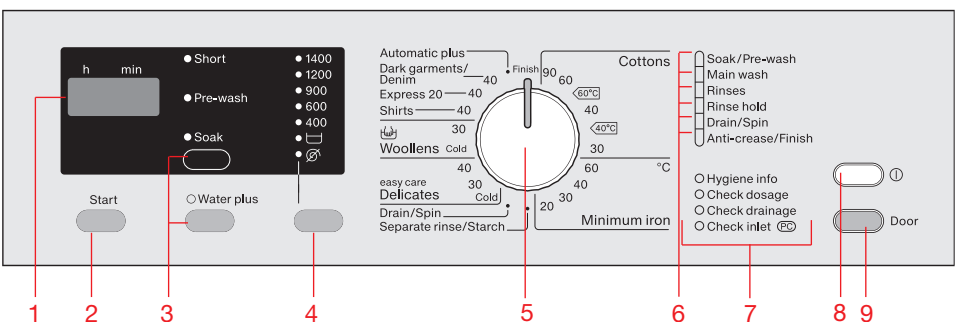
This also activates the ball valve. The ball valve prevents detergent escaping from the suds container into the sump during a wash programme, thus making maximum use of the detergent.

Running the first programme

- Turn on the tap.
- Switch on the washing machine with the button.
- Turn the programme selector to *Cottons* 60°C.
- Press the *Start/Stop* button.
- Switch the washing machine off at the end of the programme.

The machine is now ready for use.

Operating the washing machine



- 1 Display**
The display shows the programme duration (Time left display) and the programmable functions.
- 2 Start button**
For starting the programme selected and cancelling a programme once it has started.
- 3 Extra option buttons**
For selecting Extra options. Use the upper button to select Short, Prewash or Soak. Use the lower button to select Water plus.
Indicator light on = option selected
Indicator light off = option not selected
- 4 Spin button**
With spin speed indicator lights for selecting the spin speed.
- 5 Programme selector**
For selecting a wash programme.
- 6 Programme sequence indicator lights**
Show which stage of the programme has been reached.
- 7 Check / Fault indicator lights**
See "Problem solving guide".
The PC check light is also used by service technicians to run diagnostic checks and may be used to update programming data in the future.
- 8 button**
For switching the washing machine on and off. To save energy, the washing machine will switch off automatically 15 minutes after the end of the programme / Anti-crease phase or after being switched on if no other selection is made.
- 9 Door button**
For opening the door.

Washing environmentally and economically

- To make the most out of your machine, load the maximum dry load for the programme you are using.
- When smaller amounts of laundry are washed, the automatic load recognition system will reduce the amount of water and energy used.
- Use the *Express 20* programme for small, lightly soiled loads.
- Modern detergents enable washing at reduced temperatures (e.g. 20°C). Use appropriate temperature settings for saving energy.
- Reduce the amount of detergent with smaller loads (approx. 1/3 less than the amount recommended can be used when washing a half load).
- Selecting the highest possible spin speed for the wash programme will save energy when drying in a tumble dryer afterwards.

Washing

1. Preparing the laundry



- Sort the laundry by colour and by care label. Most garments have a textile care label in the collar or side seam.
- Pre-treat stains and badly soiled areas (see the booklet "Miele's guide to laundry care").

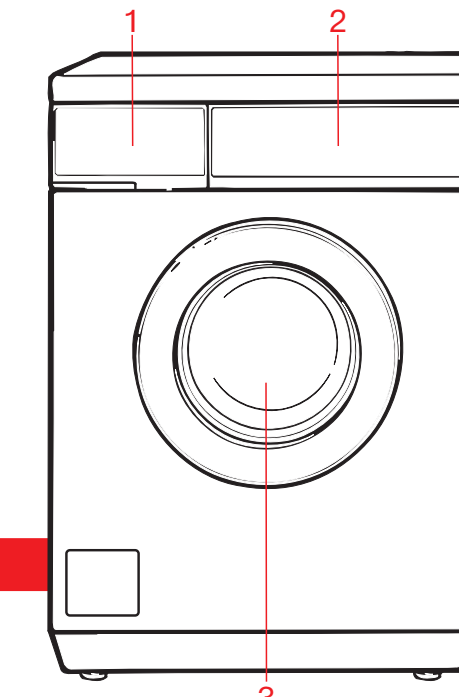
2. Selecting a programme

- Switch on the washing machine with the button.

Programme selection

- Turn the programme selector to the required programme.
- The estimated programme duration will appear in the display.

During the first 10 minutes the machine measures how much water is being absorbed by the laundry. The programme duration may be longer or shorter depending on this absorbency rate.



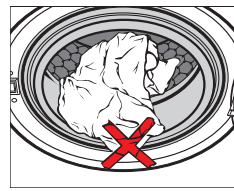
- 1 Detergent dispenser drawer**
- 2 Control panel**
- 3 Door**

3. Loading the washing machine

- Press the *Door* button to open the door.
- Unfold the laundry and load loosely in the drum.

Mixing both large and small items gives better wash results and also helps distribute the load evenly during spinning.

Closing the door



- Make sure that no items are caught between the door and the seal.
- Shut the door with a gentle swing.

4. Selecting programme settings

Selecting Extras

Each press of the upper button selects the Extra options: *Soak* or *Pre-wash* or *Short* or no Extra option. Use the lower button to select the *Water plus* Extra option.

- Select the Extra option(s) you want.

Useful tip: Not all the Extra options can be used with every programme.

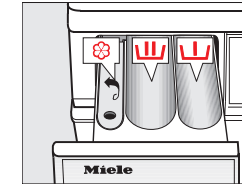
You can only select Extra options which are compatible with the programme being used.

Selecting a spin speed

You can alter the preset spin speed of a wash programme.

- Press the Spin button repeatedly until the indicator light of the spin speed you want comes on.

5. Adding detergent



- Pull out the detergent drawer and add detergent to the compartments.

- Detergent for the pre-wash (divide the total recommended amount as follows: add 1/3 to compartment 1 and 2/3 to compartment 2)
- Detergent for the main wash, including Soak if selected
- Fabric softener or liquid starch

- Close the detergent dispenser drawer. See "Detergent" in the operating instructions for more information.

6. Starting the programme - the end of the programme

- Press the flashing *Start* button.

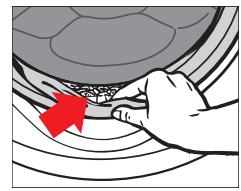
At the end of the programme

When the programme has finished, the *Anti-crease/Finish* indicator light will light up in the programme sequence display and 0 will appear in the display.

The washing machine will switch off automatically 15 minutes after the end of the Anti-crease phase. Press the button to switch it back on again.

- Press the *Door* button to open the door.
- Remove the laundry.

Check that all items have been removed from the drum.



- Switch the washing machine off with the button.
- Turn the programme selector to *Finish*.
- Close the door.

Changing the programme sequence

Cancelling a programme

- Turn the programme selector to *Finish*. The suds will be pumped away. The water will drain away. The programme is cancelled as soon as the Anti-crease/Finish indicator light comes on and 0 appears in the display.

Removing the laundry

- Turn the programme selector to *Drain/Spin*.
- Useful tip:** Please take note of the spin speed selected.
- Press the *Start* button.
- Press the *Door* button.
- Remove the laundry.

Selecting another programme

- Switch the washing machine off and then back on with the button.
- Check that there is still detergent in the dispenser drawer. Add more detergent if necessary.
- Turn the programme selector to the programme you want and start the programme by pressing the *Start* button.

Making changes

Programme

Once a programme has started, it is no longer possible to select a different programme.

Temperature

The temperature can be changed within six minutes of the programme starting.

Spin speed

The spin speed can be changed at any time.

Extras

It is possible to select or deselect the *Water plus* Extra option up to six minutes after the programme has started.

Interrupting a programme

- Switch the washing machine off with the button.
- Switch the washing machine back on with the button to continue with the same programme.

Adding or removing laundry after a programme has started

- Press the *Door* button until the door opens.
 - Add or remove items.
 - Close the door.
- The programme will continue.

Once a programme has started, the washing machine cannot recognise any adjustment to the load. For this reason, if laundry is added or removed after the start of a programme, the machine will always complete the programme cycle assuming a full load. This can lead to an increase in the time left displayed.

The door cannot be opened if:

- the suds temperature is above 55°C.
- the water is above a certain level.
- the programme has reached the *Spin* stage.

Programme chart

CHANGING THE PROGRAMME SEQUENCE				CHANGING THE PROGRAMME SEQUENCE	
Programme	Load (in kg)	Temperature	Items	Extra options	
Cottons	7.0	30°C to 90°C	Cottons, linens or cotton mix fabrics, e.g. table linen, towelling, underwear, T-shirts etc.	A, B, C, D	
Minimum iron	3.5	20°C to 60°C	Synthetic, mixed fibre and easy care cotton.	A, B, C, D	
Automatic plus	5.0	40°C	Mixed loads of garments suitable for the Cottons and Minimum iron programmes. Sort according to colour.	A, B, C	
Dark garments/ Denim	3.5	40°C	Black and dark garments made from cotton, mixed fibres and denim.	A, B, C	
Express 20	3.5	40°C	Cotton garments that have hardly been worn or are only very lightly soiled.	A, D	
Shirts	2.0	40°C	Shirts and blouses made of cotton and mixed fibre.	A, B, C, D	
Woolens	2.0	Cold and 30°C	Machine-washable or hand-washable wool or wool blend fabric. If the care label does not specify a temperature, wash using the cold setting.	A, B, C	
Delicates	2.0	Cold to 40°C	Delicate garments made from synthetic fibre, mixed fibre, rayon and viscose. Curtains, including net curtains, specified as machine-washable by the manufacturer.	A, B, C	
Drain/Spin Separate rinse/ Starch	-	-	Drain only: Select for the spin speed. For rinsing hand-washed items. Starching table cloths, serviettes and workwear.	D	

A = Short; B = Pre-wash; C = Soak; D = Water plus

Extras/Useful tips

Extras

You can use the Extra option buttons to augment the wash programmes.

Short

For light soiling with no visible staining. The wash duration is reduced.

Pre-wash

For laundry with large amounts of dirt, e.g. dust and sand.

Soak

For heavily soiled and stained items with protein stains. A duration of between 30 minutes and 2 hours in 30-minute increments can be chosen for the soak process (see "Programmable functions" in the operating instructions).

Water plus

The water level in the main wash and the rinses will be increased. You can programme other options for the *Water plus* button. These are described in "Programmable functions" in the operating instructions.

Useful tips

Detergent dispensing aids

Use dispensing aids, (e.g. balls) if these are supplied with the detergent, particularly when using liquid detergent.

Refill packs of detergent

When purchasing detergent, buy refill packs wherever possible. This helps reduce the amount of waste packaging.

Water softeners

A water softener can be used to cut down on the use of detergents in hard water areas. Dispense according to the amount specified on the packaging. First add detergent and then the water softener. You can then use the recommended amount of detergent for soft water.

Fabric softeners and liquid starch

– Fabric softener makes garments soft to handle and helps prevent static cling when tumble drying.
– Starch stiffens and gives body to items of laundry, e.g. shirts, tablecloths and bed linen.

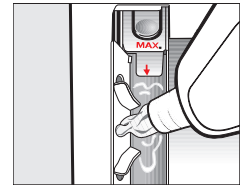
Detergent

Miele recommended detergents

Programmes	Miele UltraWhite	Miele UltraColor	Miele WoolCare	Miele fabric softener
Cottons	✓	✓	–	✓
Minimum iron	–	✓	–	✓
Automatic plus	–	✓	–	✓
Dark garments/ Denim	–	✓	–	✓
Express 20	–	✓	–	✓
Shirts	✓	✓	–	✓
Woolens	–	–	✓	✓
Delicates	–	–	✓	✓
Drain/Spin	–	–	–	–
Separate rinse/ Starch	–/–	–/–	–/–	✓/–

✓ = Recommended; – = Not recommended

Dispensing fabric softener and liquid starch at the end of the programme



- Add the fabric softener or the liquid starch to compartment 8. **Do not exceed the maximum level mark.** It will be automatically dispensed in the final rinse. At the end of the programme a small amount of water remains in the fabric softener 8 compartment.

If starching frequently, thoroughly clean the dispenser compartment, especially the siphon tube, regularly.

Adding fabric softener or liquid starch separately

- Prepare the starch in accordance with the manufacturer's instructions on the packaging.
- Add fabric softener to the 8 compartment.
 - Add liquid starch to the 8 compartment and powder or viscous starch to the 11 compartment.
 - Select the *Separate rinse/Starch* programme.
 - Change the spin speed if necessary.
 - Press the *Start* button.

EXTRAS/TIPS/DETERGENT

Cleaning and care

The right amount to dispense will depend on the following:

- The soiling level of the laundry.

Lightly soiled:
No visible dirt or stains. Possibly slight body odour.

Normally soiled:
Visibly dirty and/or just a few slight stains.

Heavily soiled:
Soiling and/or stains clearly visible.

- The quantity of the laundry.
- Check with your local water supplier if you do not know the hardness level in your area.

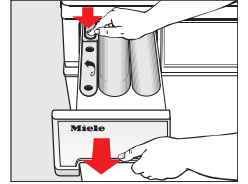
Cleaning the drum (Hygiene info)

Washing at low temperatures and/or using liquid detergent can cause bacteria and unpleasant odours to build up in the washing machine. In order to clean the drum and also to prevent unpleasant odours building up, run a programme with a temperature of at least 60°C using powder detergent once a month or when the *Hygiene info* light comes on.

Cleaning the detergent dispenser drawer

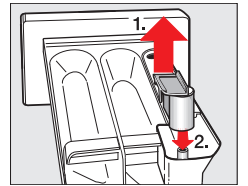
Washing at low temperatures and the use of liquid detergent can lead to a build-up of mould and bacteria in the detergent dispenser drawer.

- For hygiene reasons, clean the entire drawer at regular intervals.



- Pull out the detergent dispenser drawer until a resistance is felt.
- Press down the release button and, at the same time, pull the drawer right out of the machine.
- Clean the detergent dispenser drawer with warm water.

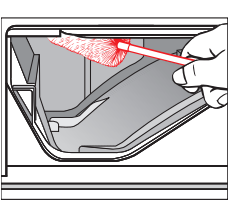
Cleaning the siphon and the fabric softener channel



- Pull the siphon out of the 8 compartment and clean it under warm running water.
- Clean the siphon tube in the same way.
- Refit the siphon.

⚠ Liquid starch can cause the siphon to become clogged. Make sure that you clean the siphon and siphon tube particularly thoroughly after using liquid starch a few times.

Cleaning the detergent dispenser drawer housing



- Use a bottle brush to remove detergent residues and limescale from the jets inside the detergent dispenser drawer housing.

CLEANING AND CARE

Problem solving guide

To switch off the fault indicator: Switch the washing machine off with the 1 button and turn the programme selector to *Finish*.

Problem/Fault message	Possible cause and remedy
The Anti-crease/Finish indicator light is not on or the Start button is not flashing.	<ul style="list-style-type: none">There is no power to the machine.■ Check whether the mains plug is plugged in and switched on.■ Check whether the fuse or circuit breaker has tripped.■ Check whether the door is closed properly. <p>The washing machine has switched off automatically to save energy.</p> <ul style="list-style-type: none">■ Switch it back on with the 1 button. <p>The water outlet is blocked.</p> <ul style="list-style-type: none">■ Clean the drain filter and the drain pump (see the operating instructions).
The Check drainage fault indicator light flashes and a fault number appears in the display.	<ul style="list-style-type: none">The water inlet is blocked.■ Turn on the tap. <p>The filter in the water inlet is blocked.</p> <ul style="list-style-type: none">■ Clean the filter (see the operating instructions). <p>The anti-flooding system has reacted.</p> <ul style="list-style-type: none">■ Turn off the tap.■ Call Miele.
The Check inlet and Check drainage fault indicator lights flash and a fault number appears in the display.	<ul style="list-style-type: none">The water inlet is blocked.■ Turn on the tap. <p>The filter in the water inlet is blocked.</p> <ul style="list-style-type: none">■ Clean the filter (see the operating instructions). <p>The anti-flooding system has reacted.</p> <ul style="list-style-type: none">■ Turn off the tap.■ Call Miele.
The Soak/Pre-wash or Rinses indicator light flashes in the programme sequence display and a fault number appears in the display.	<ul style="list-style-type: none">There is a fault.■ Restart the programme. If this fault message continues to appear in the display, contact Miele.
The Hygiene info check indicator light comes on.	<ul style="list-style-type: none">A programme of at least 60°C has not been run for a long period of time.■ In order to prevent bacteria and unpleasant odours building up in the machine, run the Cottons 90°C programme using powder detergent.

Problem/Fault message	Possible cause and remedy
The Check dosage check indicator light comes on.	<ul style="list-style-type: none">Excessive foam has built up during washing.■ Use less detergent next time and follow the manufacturer's instructions on dosage given on the packaging.
The Main wash or Rinses indicator light flashes in the programme sequence display and a fault number appears in the display.	<ul style="list-style-type: none">The washing machine has detected a fault during the wash programme.■ Restart the programme. If this fault message continues to appear in the display, contact Miele.
The Anti-crease/Finish indicator light flashes in the programme sequence display.	<ul style="list-style-type: none">The programme selector was moved to another position after the programme had started.■ Turn the programme selector back to the original position.
The drum door cannot be opened by pressing the Door button.	<ul style="list-style-type: none">The machine is not connected to the electricity supply and/or is not switched on.■ Insert the plug in the socket and switch on, and/or switch the machine on with the 1 button. <p>Power cut.</p> <ul style="list-style-type: none">■ Open the door as described in "Opening the door in the event of a blocked drain outlet and/or power failure" in the operating instructions. <p>The door was not correctly engaged.</p> <ul style="list-style-type: none">■ Press hard against the lock side of the door and then press the <i>Door</i> button. <p>There is still water in the drum and the machine is unable to drain.</p> <ul style="list-style-type: none">■ Clean the drain filter and the drain pump. <p>For safety reasons, the door cannot be opened if the suds temperature is higher than 55°C.</p> <ul style="list-style-type: none">■ Allow the programme to finish or cancel it and wait until the temperature in the drum has dropped.

PROBLEM SOLVING GUIDE

Quick Start Guide
Washing machine



These short instructions are not a substitute for the operating instructions supplied with the appliance. Please read the operating instructions supplied with your washing machine before using it for the first time and take note of the Warning and Safety instructions, as well as the full descriptions on how to use your appliance.