

Product:

9.5kg Top Load
Washing Machine

Model Code/s:

ETL95.1

Esatto

User Manual

Exactly what
you need

Online:

esatto.house

Esatto
Appliances
Exactly what
you need

Contents

04
Welcome

05
Safety
Instructions

09
Product
Overview

10
Getting
Started:
Installation

14
Controls

16
Operating
Your Washing
Machine

20
FAQ

22
Care and
Cleaning

24
Other Useful
Information

26
Warranty
Information

Welcome

Residentia Group

—

Head Office

118 Campbell Street
Collingwood VIC
Australia 3066

—

ACN

600 546 656

—

Online

residentia.group

—

Postage

PO Box 341, Mt Eliza
Victoria Australia 3930

—

Telephone

1300 11 4357

—

Email

support@residentia.group

Congratulations on purchasing your washing machine. The Esatto brand is proudly distributed within Australia by Residentia Group Pty Ltd.

Please refer to the warranty card at the rear of this manual for information regarding your product's parts and labour warranty, or visit us online at www.residentiagroup.com.au.

At Residentia Group, we are customer obsessed and our Support Team are there to ensure you get the most out of your appliance. Should you want to learn more about your washing machine such as the various washing modes or importantly taking care of the appliance, our Support Team are here to help.

You can use our online Support Centre at anytime by visiting <http://support.residentiagroup.com.au>, or you can contact us via phone by dialing: 1300 11 HELP (4357).

It is important that you read through the following use and care manual thoroughly to familiarise yourself with the installation and operation requirements of your appliance to ensure optimum performance.

Again, thank you for choosing an Esatto appliance and we look forward to being of service to you.

Kind Regards,
The Residentia Team



Safety Instructions

IMPORTANT SAFETY INSTRUCTIONS
READ CAREFULLY AND KEEP FOR FUTURE REFERENCE

Important

Read this manual thoroughly before first use, even if you are familiar with this type of product. The safety precautions enclosed herein reduce the risk of fire, electric shock and injury when correctly adhered to.

Keep the manual in a safe place for future reference, along with the completed warranty card and purchase receipt. If applicable, pass these instructions on to the next owner of the appliance.

Always follow basic safety precautions and accident prevention measures when using an electrical appliance, including the following:



Warning

This heading indicates that there is a serious risk of injury if you do not adhere to the warning(s).



Caution

This heading indicates that care should be taken to avoid injury to persons or damage to property.



A tick in a circle accompanies a measure or action that you should do or follow.



A cross in a circle accompanies a measure or action that you should NOT do.

Electrical safety

- Before connecting and turning on the washing machine, ensure the electrical voltage and circuit frequency correspond to those indicated on the appliance.
- Only connect the washing machine to a grounded (earthed) electrical outlet.
- Do not insert any objects into the appliance.
- Do not kink or damage the power cord, and position it out of the way so no one steps on or places anything on the cord or against it.
- Do not overload the wall outlet. Overloading can result in fire or electric shock.
- If the supply cord is damaged, it must be replaced by the manufacturer or its service agent or a similarly qualified person in order to avoid a hazard.
- Never use this washing machine with a power adapter or an extension cord.
- Unplug the washing machine from the power supply before cleaning, servicing, maintenance or moving the appliance. Pull by the plug, not by the cord.
- After use, always unplug the appliance and turn off the water.

Warning

All electrical work must be done in accordance with local and national electrical codes as applicable and should be undertaken by licenced and qualified persons only.

General Safety Instructions Cont.

Installation

- Install the washing machine on a flat surface to avoid overturning during use.
- Connect the washing machine to the water mains using new hose sets. Do not reuse old hose sets.
- Make sure that all water and electrical connections are made by qualified personnel only, observing local safety regulations and following the manufacturer's instructions (see "Getting Started: Installation" on pages 10 to 13).
- Improper installation may result in the risk of fire, electric shock and/or injury.
- We assume no liability for any eventual damages caused by improper installation.

Usage conditions and restrictions

- The appliance is designed for home use only. It is not suitable for commercial or trade use.
- Do not operate the appliance outdoors.
- This appliance is not intended for use by persons (including children) with reduced physical, sensory or mental capabilities, or lack of experience and knowledge, unless they have been given supervision or instruction concerning use of the appliance by a person responsible for their safety.
- Young children should be supervised to ensure they do not play with the appliance.
- Before loading the washing machine, always ensure no pet or young child has climbed into it.
- Make sure all pockets of clothing to be washed are empty. Hard, sharp objects such as coins, safety pins, bra wires, nails, screws or stones can cause extensive damage to the appliance and block the pump.
- Any damage or malfunction resulting from foreign objects is not covered by your warranty and may lead to expensive repairs.
- We assume no liability for any eventual damages caused by improper or faulty use.

Cleaning and maintenance

- Before cleaning or carrying out maintenance, always unplug the appliance from the power supply.
- Except for the filters that require regular cleaning, the unit has no user-serviceable parts contained within. Do not attempt to repair, disassemble or modify it. Repairs made by inexperienced or unqualified persons may cause injury and/or make more serious repairs to the appliance necessary.
- **CAUTION:** After each wash, check and clean the lint filter inside the drum. Also check and clean the lint filter at the back of the machine next to the drain hose outlet on a regular basis.
- This appliance should only be serviced by an authorised service centre, and only genuine spare parts should be used. Contact the after sales support line for advice.

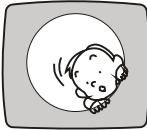
Caution!

During unpacking, the packaging materials (polythene bags, polystyrene pieces, etc.) should be kept out of reach of children.

General Safety Instructions Cont.

Warnings

Do not let children climb into the washing machine or peer into the rotating spin barrel.



Do not wash clothes that have residue of flammable materials.



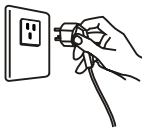
Do not use the appliance if the power cord or plug is damaged to avoid an electric shock, short circuit or fire.



Regularly clean the power plug to remove dust and dirt and avoid contact failure.



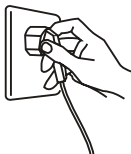
Turn the machine off before pulling out the plug from the socket if the machine is not in use.



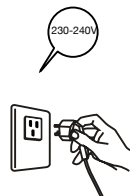
Do not place any lit candles or cigarettes on top of the washing machine.



Insert the power plug securely.



Use a 230-240V AC power source.

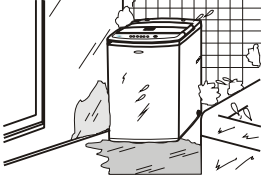


General Safety Instructions Cont.

To avoid electric shock, fire and malfunction, do not install this machine in a damp place.



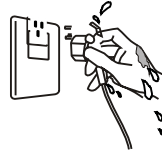
No dampness



Do not pull out or insert the plug with wet hands to avoid electric shock.



No wet hands



Cautions

Ensure the water inlet hoses are connected and the taps are turned on before washing a load.



Do not allow children to lay or sit on top of the washing machine.



Do not change the power cord. If it needs changing, contact a qualified electrician or call the after sales support line.



Do not wash jackets, raincoats, fishing coats and similar clothes in the washing machine.



Do not pull the power cord when removing the plug.



The water temperature should not exceed 60°C when washing with warm water.



Product Overview

Top Load Washing Machine Layout



Key:

- 1 Water inlet hoses
- 2 Lid
- 3 Softener dispenser
- 4 Washing/Spin drum
- 5 Control panel
- 6 Detergent drawer
- 7 Lint filter(opposite the softener dispenser)
- 8 Pulsator
- 9 Handle (one on each side)
- 10 Rollers (one on each back corner)
- 11 Adjustable leg

Accessories (not to scale):

- 12 Hot water inlet hose (red stripe)
- 13 Cold water inlet hose (blue stripe)
- 14 Base cover
- 15 Installation screws

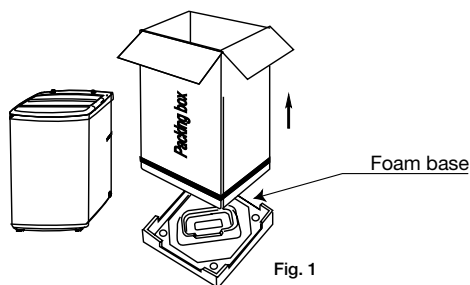
Not shown:

- Instruction manual
- Quick start guide
- Warranty certificate

Getting Started: Installation

Unpacking

- This product has been packaged to protect it against transportation damage. Unpack the appliance but keep all packaging materials until you have made sure your new washing machine is undamaged and in good working order. The carton is recyclable. Whenever possible, reuse the carton and recycle it when disposing of the packaging materials.
- Plastic wrapping can be a suffocation hazard for babies and young children, so ensure all packaging materials are out of their reach. Dispose of any plastic wrapping safely.
- Unwind the power cord to its full length and inspect it for damage. Do not use the appliance if the appliance or its cord have been damaged or are not working properly. In case of damage, contact our after sales support line for advice on examination, repair or return of the damaged product.
- Read this manual to familiarise yourself with all the parts and operating principles of the washing machine. Pay particular attention to the safety instructions on the previous pages.
- Ensure the washing machine is lifted off the foam base per the illustration below (Fig. 1)



Installing the base cover

Make sure the power cord is unplugged from the mains supply.

- Place some padding (such as a soft mat, blanket or thick towel) on the floor and gently lay the washing machine on the padding, back side down. Take care not to dent the housing.
- Insert the base cover into the grooves on the underside of the washing machine. (Fig. 2)
- Now secure the base cover by tightening the screw in the centre screw hole as shown in Fig. 2

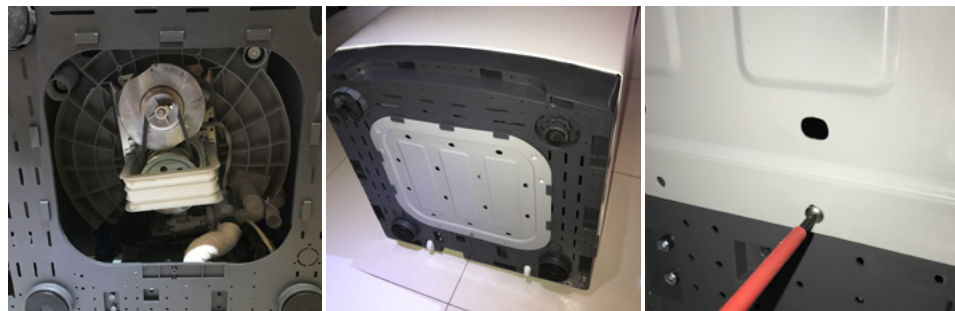


Fig. 2

Getting Started: Installation Cont.

Installing the Drain Hose

- The drain hose and drain pump filter are located at the back of the machine, as illustrated below (Fig. 3).
- Pinching the two bands of the clamp on the drain hose, connect it to the drain hose connection at the back of the washer, as illustrated below, middle.
- When the washer is in use, put the drain hose into a drain spout (or into a sink/tub), as illustrated in Fig. 4.

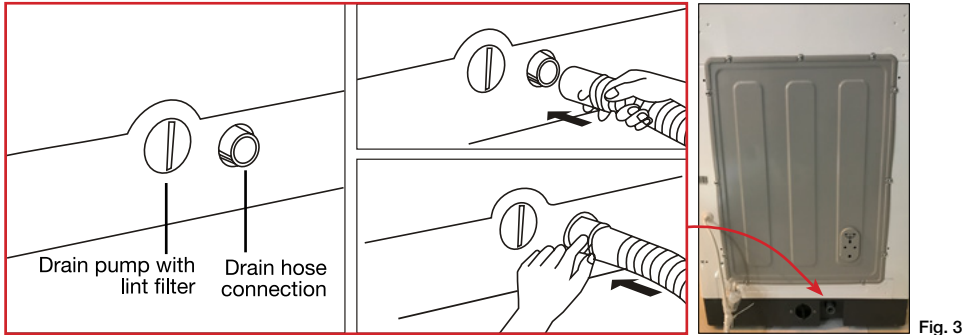


Fig. 3

- While the washer is in use, make sure the height of the drain hose is at least 86cm, otherwise the washer will not work well, or the water may flow out in the course of washing. Also ensure the drain hose is not higher than 120cm above ground, otherwise the washer will not drain water well.
- Never lay down the drain hose, as water will be discharged.
- Be sure the drain hose is properly routed so it will not kink or lift off the sink.

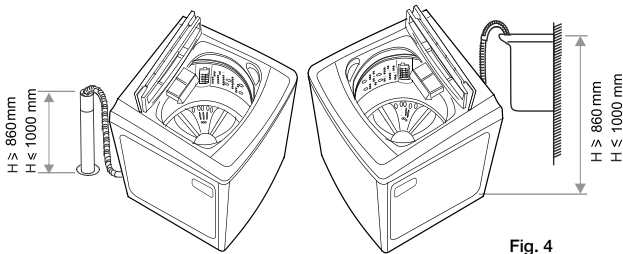


Fig. 4

Connecting the Water Inlet Hoses

- Install the water inlet hoses to your hot and cold water taps, following the instructions below.
- Check and ensure that the sealing washers are firmly in place.
- Attach the straight end of the hose to your water taps. Make sure to attach the hot water supply hose (with a red stripe) to the hot water tap and the cold water supply hose (with a blue stripe) to the cold water tap.
- Tighten the coupling nuts securely by hand, as illustrated on the right (Fig. 5).

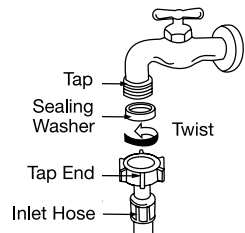
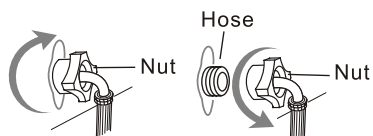


Fig. 5

Getting Started: Installation Cont.

- Attach the curved end of the hose to the corresponding inlet valve of the washing machine.
- Tighten the coupling nuts securely by hand, as illustrated on the right and below (Fig. 6 and Fig. 7).

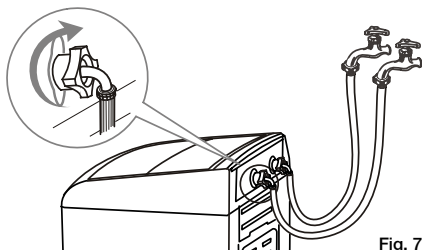
- Tighten the nut by turning it clockwise while holding the hose. (To detach the water supply hose, turn the nut anticlockwise after turning the tap off.)
- Turn on the taps and check for leaks. Tighten the coupling nuts firmly if there is any leakage. If your water pressure is strong, close the water tap completely, then open it slightly.
- Make sure your hot water from the tap is no hotter than 60°C.

IMPORTANT!

Both the hot water and cold water hoses must be connected to your taps.

**CAUTION!**

When tightening the clamping nut, take care not to damage the water inlet valve joint. Apply force evenly and do not twist the water inlet valve.

**CAUTION!**

Use only the new (supplied) hoses with your new appliance. Do not use a hose from an existing machine, or one that has been used previously.



CAUTION! In the event that the hoses are too short for your set-up, please seek advice from your local washing machine store to purchase a longer hose.

Getting Started: Installation Cont.

Location of machine & Levelling

- The washing machine is equipped with two rollers at the rear that can be used to easily move the machine to its desired location. Tilt the washing machine by approximately 30 degrees and push forward or pull backwards while holding the machine securely on both sides with your hands as illustrated below (Fig. 8).
- Move the washing machine to its desired location and install on a stable and level surface.
- Note: Moving the machine using the rollers on an uneven surface can damage the rollers.

CAUTION!

Take care of your back. Do not tilt the washing machine too much, which could cause injury.

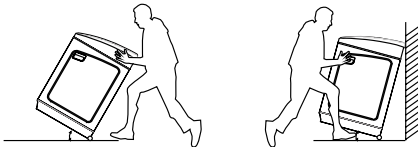


Fig. 8

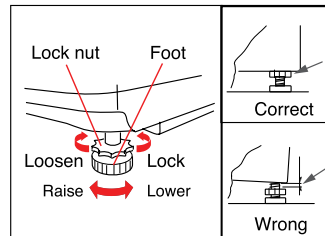


Fig. 9

- If the ground surface where the washing machine is located is uneven, it may require levelling to stabilise. Using the adjustable foot at the front right hand side of the machine, twist anti-clockwise to increase the leg height or clockwise to lower the leg height (Fig. 9).

Note: The washer must not be installed on any textured floor coverings, for example: carpet or rugs.

- Once the washing machine is installed in its desired location, it is time to connect the power supply and turn on the water supply at the hot and cold taps.



CAUTION!

- Check the power supply for damage, making sure it is not squashed or kinked.
- If the power supply is damaged, do not install!
- A damaged power supply must be replaced by a licensed electrician in avoid a hazard. Do not operate the appliance until it is repaired as there is a risk of electric shock.

Before your first use

You owe it to yourself and your washer to have your washer installed correctly.

Before you start, it is a good idea to go through the following checklist:

- 1 Has the washer been lifted out of the foam base packaging? Refer to page 10.
- 2 Is the drain hose installed securely to the machine using the provided ring clamp and is the hose threaded through the 'U-shaped hose guide' and hooked into your tub or standpipe?
- 3 Is the hot hose (red striped) connected to the Hot valve (marked 'Hot') on the rear of the machine?
Is the cold hose (blue striped) connected to the Cold valve (marked 'Cold') on the rear of the machine?
- 4 Is the washer correctly levelled, feet are extended and cabinet corners are clear of the floor?
- 5 Before using the washing machine for the first time, run a complete cycle without any laundry items. Select the 'Standard' program and run the machine until the end of the program.

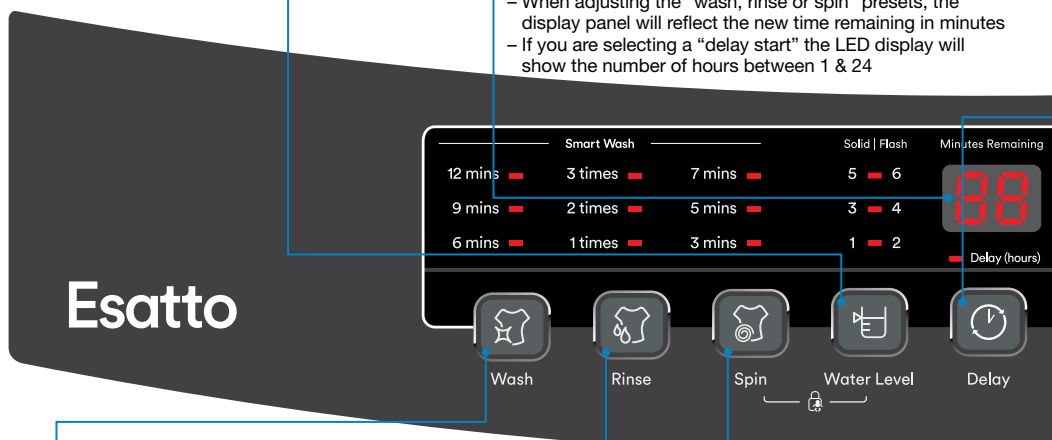
Controls

Water Level Button

- Press this button to increase or decrease the desired water level for the selected program (more information page 18).
- When the machine is first powered on, the default program is the “heavy” program. This program uses “fuzzy logic” (see page 18) whereby the machine automatically detects the weight of your wash load and selects the appropriate water level accordingly.
- With the exception of the “Heavy” program, the other 5 programs have pre-determined water levels based on the manufacturer’s recommended settings.
- When the indicator light is solid, it represents the corresponding water level on the left side of the display (1, 3 or 5).
- When the indicator light is flashing, it represents the corresponding water level on the right side of the display (2, 4 or 6)

LED Display panel

- This display will show the remaining washing time in minutes during the washing program
- When adjusting the “wash, rinse or spin” presets, the display panel will reflect the new time remaining in minutes
- If you are selecting a “delay start” the LED display will show the number of hours between 1 & 24



Rinse Button

Press this button to add to or reduce the number of rinse cycles for the selected program. Each program has a preselected number of rinse cycles based on the manufacturer’s recommended settings for the selected program.

Note: no change can be made if you have selected the Standard program

Wash Button

Press this button to increase or decrease the “wash” time of the selected program. Each program has a preselected wash time which is the manufacturer’s recommended setting for the selected program.

Note: no change can be made if you have selected the Standard program

Spin Button

Press this button to increase or decrease the length of time that the washer dedicates to the spin cycle during the selected program. Each program has a preselected “spin” time which is the manufacturer’s recommended setting for the selected program.

Note: no change can be made if you have selected the Standard program

Controls Cont.

Delay Level Button

- Press this button to delay the start of your selected washing program.
- The "delay start" feature allows you to select a period of between 1 & 24 hours in which the machine will delay the start of the selected washing program (more information page 18).

Temperature Level Button

- Press this button to adjust the temperature setting for the selected wash program.
- The default wash temperature setting for all programs except the "Standard" program is "cold". The "Standard" program default temperature setting is "warm".

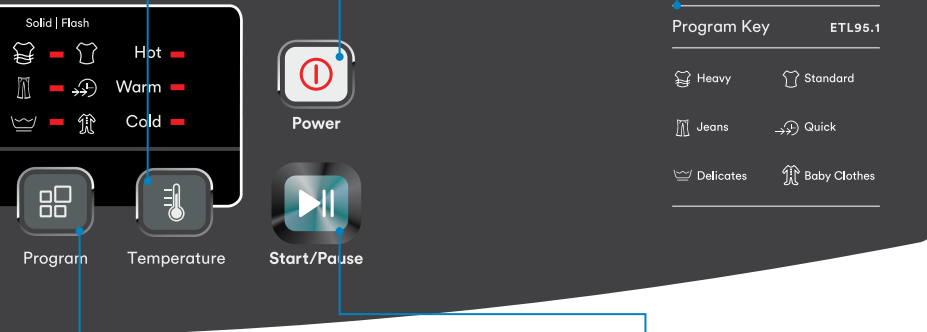
Power Button

Press this button to switch the machine on; press this button again to switch the machine off.

Note: If you switch the machine on and do not start a washing program within 10 minutes, the machine will automatically switch off.

Program Key

Symbols displayed here correspond with the symbols above the "Program Button"



Program Button

- Press this button to select your desired wash program (Heavy, Jeans, Delicates, Standard, Quick, Baby Clothes)
- The default program when the machine is first powered on is the "heavy" program.
- When the indicator light is solid, it represents the corresponding program on the left side of the display (either Heavy, Jeans or Delicates).
- When the indicator light is flashing, it represents the corresponding program on the right side of the display (either Standard, Quick or Baby Clothes).
- For more information on the programs see pages 16–17.

Start/Pause Button

- Once the desired program and settings have been selected, press this button to start the operation of the washing machine.
- Pressing this button during the course of the washing cycle will pause the machine, pressing it again will resume the operation.

Operating Your Washing Machine

Before you start

- It is important to sort your washing into appropriate loads, particularly separating white/light colours from dark colours, as well as separating out sheets and towels.
- Wash new, highly coloured and dark coloured items separately to prevent dye transfer onto other items.
- Sort “lint givers” and “lint collectors” (see table below) and where possible wash these items separately. It is a good idea to turn “lint givers” inside out.

Lint Givers	Lint Collectors
Towels	Synthetics, eg polar fleece
Chenille	Corduroy
Nappies	Poly cotton
	Socks

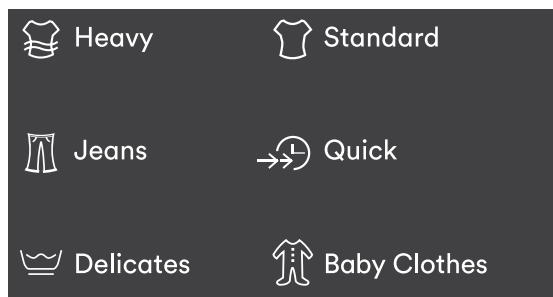
- Close bra clasps, do up zippers and check pockets.
- Place your clothes directly into the washing drum.

Select your program

- Once the clothes have been loaded into the drum, select the desired program. See below program guide to assist with your program selection.

Program	Wash Time	Rinse Time	Water Level	Spin Time	Total Time
Heavy	12 mins	2 Cycles	Auto-detect	5 mins	44 mins
Jeans	Soak: 10 mins	3 Cycles	6	7 mins	70 mins
	Wash: 15 mins				
Delicates	9 mins	2 Cycles	6	3 mins	39 mins
Standard	Soak: 30 mins	1 Cycle	6	5 mins	79 mins
	Wash: 18 mins				
Quick	6 mins	1 Cycle	3	3 mins	23 mins
Baby Clothes	15 mins	3 Cycles	5	9 mins	62 mins

Program Icon Key



Operating your Washing Machine Cont.

- **Heavy**

- o Suitable for washing large loads including towels and bed sheets. The Heavy program includes an additional 15 minute soaking time during the washing process.

- **Jeans**

- o Suitable for denim and heavily soiled clothes such as workwear

- **Delicates**

- o Suitable for delicate fabrics. This program has a slower washing and spin speed to provide protection to your clothes.

- **Standard**

- o Suitable for normally soiled clothing and most common cotton fabrics. Note: This program is the program used to obtain energy and water efficiency ratings. The manufacturer declares that the water consumption of warm wash is not more than cold wash

- **Baby Clothes**

- o Suitable for baby and infant clothing. This program has an increased rinsing time to reduce the chance of detergent residue which may irritate young children's skin.

- **Quick**

- o Suitable for lightly soiled clothes

Add Detergent

- Slide out the detergent drawer (Fig. 10).
- For best wash results, follow the detergent manufacturer's instructions as shown on the packaging.
- Pour required amount of liquid or powder detergent into the detergent drawer and close the drawer.



Fig. 10

Add Fabric Softener (if required)

- If you wish to use fabric softener, pour the desired amount into the fabric softener inlet on the side of the drum (Fig. 11).
- Always follow the manufacturer's recommendations on the fabric softener packaging for the correct dosage.



Fig. 11

Normal usage (no delay start)

- Now that the program has been selected and the detergent/fabric softener have been added you are ready to start the washing cycle.
- Close the lid and ensure that it closes properly; if it is not closed properly an alarm will sound and the washing process will not begin.
- Press the "Start/Pause" ►|| button to begin the washing program.
- The LED display indicator will show the remaining wash time during the washing process (Fig. 12).
- If the "Start/Pause" ►|| button is pressed during the washing process, the machine will pause and once the button is pressed again it will resume from the same place it was paused.
- At the completion of the selected program cycle, an alarm will sound to alert you that the program has finished.

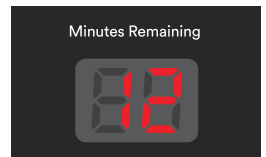


Fig. 12

Operating your Washing Machine Cont.

Customising a Program

- The washing machine is equipped with fuzzy logic technology when using the “Heavy” program. The machine will detect the weight of your wash load and select the appropriate wash cycle processes.
- Using the fuzzy logic technology, the machine will automatically select the correct water power and level, wash and spin time, and rinse type.
- If you wish to manually adjust the program yourself, you can follow the instructions below:

1. Prepare your washing according to points on page 16.
2. Press the Power button, then press the Program button to select the washing program, e.g. Heavy, Jeans.
3. Press the appropriate process button to select the process and time you want to adjust. The relevant indicator light will illuminate when the option is selected.

Wash Time Options	Rinse Options	Spin Time Options	Delay Time Options
6 / 9 / 12 minutes	1 / 2 / 3 cycles	3 / 5 / 7 minutes	0 / 1 / 2 / ... / 24 hours

4. Press the Water Level button and choose an appropriate water level.
5. Close the lid and press the Start/Pause button for the washing program to start.
6. At the end of the washing program, a buzzer will sound to alert you that the program has finished before the power is shut off automatically.

Note: When the Standard program is selected, you can not adjust the wash rinse or spin functions.

Selecting a cycle process (instead of complete wash program)

- On occasion, you may wish to select a single wash cycle or two cycle processes instead of a complete washing program. For example, if clothing has been soaked from rain, you may want to run a “spin cycle” only.

Examples below

- o **Spin Cycle Only:** Press the “Wash” button until there is no indicator light on any of the settings. Press the “Rinse” button until there is no indicator light on any of the settings. Now you can press the “Spin” button between the 3 available settings depending on how long you wish to run the cycle.
 - See Fig. 13 for reference.
- o **Rinse & Spin Cycle Only:** Press the “Wash” button until there is no indicator light on any of the settings. Now you can press the “Rinse” and “Spin” buttons between the available settings to create your desired program.



Fig. 13

Operating your Washing Machine Cont.

Using the Delay start feature

- The delay start feature on the washing machine can delay the start of your selected washing program by 1 hour up to 24 hours.
- Press the power on/off button to turn the machine on and follow the previously outlined steps for adding the soiled load, selecting the desired program and adding the required detergent / fabric softener.
- Close the lid and ensure it is closed properly.
- Press the “delay start” ⌚ button once to delay the start by one hour, twice by two hours and so on. The maximum amount of time you can delay the start is 24 hours (Fig. 14).
- Once you have selected your desired delay start setting, press the “Start/Pause” ▶|| button to confirm the delay start.
- Once you have confirmed the delay start function, the indicator light will flash in the control panel until the program begins.
- The washing program will automatically commence following the selected delay setting.
- To cancel the Delay start setting, simply press the Power On/Off button to turn the machine off and then press it again to turn the machine back on



Fig. 14

Note: When using the delay start feature, it is recommended that you use detergent powder as opposed to liquid detergent. Do not add detergent directly onto the clothes in the washing drum as it may damage clothing.

Automatic Power-off feature

- If you switch the machine on and do not start a washing program within 10 minutes, the machine will automatically switch off. Simply press the Power On/Off button to restart the machine.

Automatic Imbalance Correction feature

- When your washer is spinning, it can sense if the wash load is out of balance. If the laundry is placed in the drum unevenly before the wash process begins, it is likely that it will cause vibration during operation. During operation, the washing machine is continuously checking for imbalance and if the spinning vibration is too great, the machine will automatically start adjusting the program to correct the imbalance.
- When the machine detects imbalance and begins the adjustment of a program, the rinse light will flash and the machine will begin to inject water to increase the water level. The machine will continue this process automatically for approximately one minute and then drain the water, returning to the original spinning state.
- If the washing machine attempts the autocorrection twice and cannot correct the balance, an alarm will sound and the machine will stop.
- At this point, you will need to open the lid and manually redistribute the wash load creating an even balance.
- Press the “Start/Pause” ▶|| button to resume the washing process.

Power failure memory function

- If your homes power supply is unexpectedly cut-off during the operation, the machine will remember where it was up to in the program cycle process. When the power supply is returned, the machine will automatically resume at the same place it was interrupted prior to the power outage.

FAQ

Error messages

When the following problems occur, the microcomputer inside the washer will detect the errors. An electronic buzzer will sound for approximately 10 seconds, an error message will flash, as shown below, and the washer will stop operating.

Problem	Error	Possible Diagnosis	Possible Solutions
Washer not filling with water	E1	<ul style="list-style-type: none"> Inlet taps not turned on Blocked inlet hose filters 'Delay Start' is set 	<ul style="list-style-type: none"> Check that both the hot and coldtaps are turned on Clear blockages from inlet hose filters Refer to page 19 for information about the 'Delay Start' function
Water is not draining	E2	<ul style="list-style-type: none"> Drain hose is not properly connect or installed Drain hose is kinked or obstructed Drain hose is clogged Drain pump lint filter at the lower rear of the machine is clogged 	<ul style="list-style-type: none"> Check the drain hose connection as per page 11 Check the drain hose connection as per page 11 Disconnect hose and check for obstructions Clear drain pump lint filter as per page 23
Washer will not start	E3	<ul style="list-style-type: none"> Lid is not closed properly 	<ul style="list-style-type: none"> Check that the lid is closed
Washer does not spin	E4	<ul style="list-style-type: none"> The load could be out of balance 	<ul style="list-style-type: none"> Pause washer and manually redistribute the load Check the washer is level and does not rock in any direction. Refer to page 13 Check the washer does not have suds build up

FAQ Cont.**Troubleshooting**

The following is a list of problems you may encounter when using this appliance and some suggestions that may help to correct the problem. If you still have problems, please contact our customer service.

Problem	Possible Diagnosis	Possible Solutions
The washer does not work	<ul style="list-style-type: none"> • Power not activated • Household power failure 	<ul style="list-style-type: none"> • Check whether the power supply cord is plugged in and the switch turned on • Check whether a power failure has occurred. Test by plugging in another electrical appliance
Washer is filling continuously	<ul style="list-style-type: none"> • Drain hose is not installed correctly • Washer could be siphoning 	<ul style="list-style-type: none"> • Ensure drain hose is located in standpipe or tub • Ensure standpipe is at least 860 mm high but no more than 1200 mm high • To prevent siphoning ensure the drain hose does not extend more than 20 mm from the end of the hose guide
Spin speed sounds slower than normal	<ul style="list-style-type: none"> • Clothes are unevenly distributed in the bowl • The outer wash bowl may still be hot from being filled with hot water 	<ul style="list-style-type: none"> • Washer has compensated by lowering the spin speed • The washer has slowed the spin speed as a protective measure
Washer is continually going out of balance	<ul style="list-style-type: none"> • Washer may not be level • Too much water for the load 	<ul style="list-style-type: none"> • Check the washer is level and does not rock in any direction. Refer to page 13 • Ensure an appropriate water level is selected for the load size
Washer is making noises	<ul style="list-style-type: none"> • Banging 	<ul style="list-style-type: none"> • Load is out of balance. Press the Start/Pause and redistribute the load
Small puddle coming from under the washer	<ul style="list-style-type: none"> • The water level is too high for the amount of clothes and has caused excessive splashing • Large bulky garments (eg towels, sheets) can cause splashing 	<ul style="list-style-type: none"> • Select a lower water level. Refer to page 14 • Select the appropriate Program for the load. Refer to pages 16–17
Linting	<ul style="list-style-type: none"> • Some items in load more likely to release or pick up lint • Overloading the washer • Not enough detergent to hold the lint in suspension 	<ul style="list-style-type: none"> • Wash lint givers (eg towels) separately from lint collectors (eg synthetic fabrics) • Try reducing your load size • Try using more detergent

Care & Cleaning

Cleaning and Care

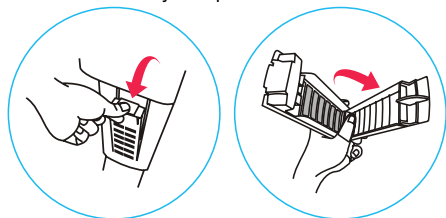
To prolong the service life of the washing machine, keep it in good condition and perform regular maintenance. For any type of cleaning and maintenance, make sure the washing machine is disconnected from the mains power supply.

Cleaning the Washing Machine (when required)

- Use a soft cloth to wipe any water or dirt off the washer lid and housing. If using a damp cloth, squeeze it almost dry to avoid leaving water residues.
- The detergent box may be pulled out for cleaning, if required. Other inside parts should be wiped with a damp cloth, if necessary.
- Do not use any chemical, alkaline or abrasive cleaning agents to avoid damaging the surface. Do not spray water directly onto the washer housing.

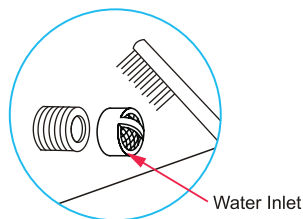
Cleaning the lint filter (suggested interval: every week)

Take out the lint filter as illustrated below. Open the filter and rinse it clean under running water, taking care not to damage any parts. Reinstall the filter, making sure it fits securely behind the cover clasp and latches and locks securely into place.



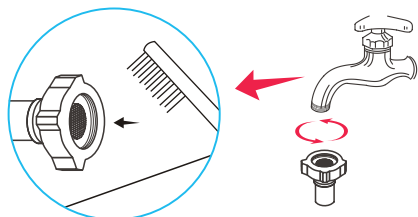
Cleaning the water inlet valve (suggested interval: every 6 months)

To avoid blockage of the mesh filter at the water inlet after long time use, detach the water inlet hose, making sure you have turned off the water supply at the taps beforehand. Take the mesh filter out of the water inlet valve and clean the filter with a soft brush. Then assemble the mesh filter back into the valve and reconnect the water inlet hose.



Cleaning the hose filter (suggested interval: every 6 months)

To avoid blockage of the hose filter after long time use, detach the water inlet hose, making sure you have turned off the water supply at the taps beforehand. Turn the nut anticlockwise to take off the hose, clean the filter under running water or with a soft brush, then reconnect the hose.

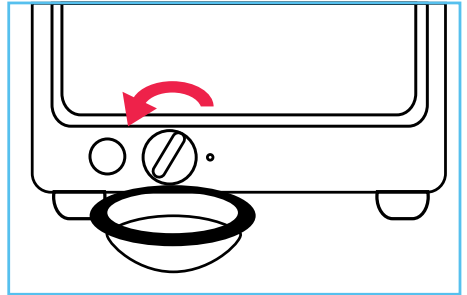
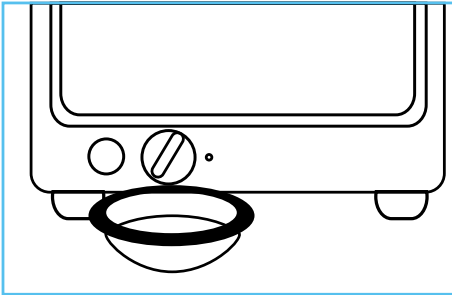


Care and Cleaning Cont.**Drain pump maintenance**

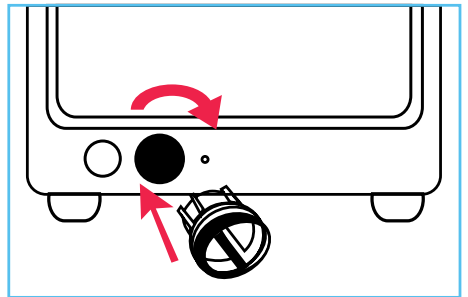
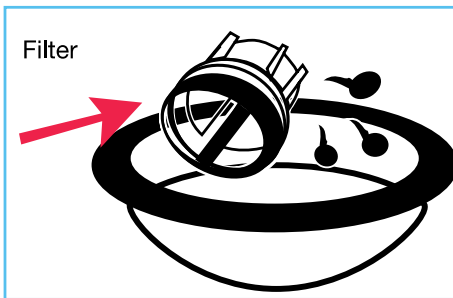
We recommend that you clean the drain pump filter regularly (at least once a month) to avoid blockages created by bobby pins, coins and excess lint.

Proceed as follows:

1. Disconnect the washer from the power source.
2. If necessary, wait until the water has cooled down.
3. Place a container underneath the pump opening to collect any spillage (see below, left).
4. Turn the filter cap anticlockwise to take it out gently (see below, right). Always keep a rag nearby to dry up water spillage when removing the pump filter.



5. To remove any objects from the filter, wash it thoroughly in a basin or under running water (see below, left).
6. Put the cap back and place the filter back in its seat (see below, right).



Note: The drain pump is located at the rear of the machine as illustrated on Fig. 3, page 11.

Other Useful Information

Spare Parts

Our after sales support centre stocks a wide range of spare parts for the ETL95.1 Esatto 9.5kg Top Load Washing Machine. To purchase a part, call the centre on 1300 11 4357 or email us at support@residentiagroup.com.au

Outer Tub Cover	Cabinet Subassembly	Assembly	Retractor
Impeller Cover	Capacitor Assembly	Impact Switch	Overflow Hose
Suspend System	Power Cord	Water Inlet Valve	Outer Tub Subordinate
Up Drain Hose	Permanent magnet	Water Level Sensor	Assembly
Assembly	synchronous pump	Nozzle Assembly	Clutch Body
Middle Hose Assembly	Balance Ring Plug	Top Cover	Subassembly
Cabinet Base Assembly	Filtering Cover	Screw Cover	Lower Cushion
Water Inlet Hose	Tub Bottom Base	PCB	Single phase
Assembly	Coupling Plate	Internal Wire Assembly	asynchronous motor
Air Pipe	Cover Assembly	Control Panel	Earth Wire Subassembly
Clip Spring	Cover Pin	Control Panel Sticker	Motor Pulley Assembly
Rear Cover	Twist Spring	Drain Valve	V-Belt
Handle	Back Control Panel	Subassembly	

This product complies with AS/NZS 60335.1 & AS/NZS 60335.2.7 for electrical safety, and with EN 55014-1:2006+A2:2011 for electromagnetic compatibility.

Dimensions			Weight
Width	Depth	Height	Net
601mm	625mm	1015mm	45kg

Other Useful Information Cont.**WARNING:**

This appliance must be earthed

In the event of a malfunction or breakdown, earthing will reduce the risk of an electric shock by providing a path of least resistance for the electric current.

This appliance is equipped with a cord having an equipment-earthing conductor and an earthing plug. The plug must be plugged into an appropriate outlet that is installed and earthed in accordance with all local standards and requirements.

WARNING:

Do not modify the plug under any circumstances. If the plug does not fit your outlet, consult a licensed electrician and have the outlet changed.

Responsible disposal

At the end of its working life, do not throw this appliance out with your household rubbish. Electrical and electronic products contain substances that can have a detrimental effect on the environment and human health if disposed of inappropriately. Observe any local regulations regarding the disposal of electrical consumer goods and dispose of it appropriately for recycling. Contact your local authorities for advice on recycling facilities in your area.

Warranty Information

WARRANTY TERMS AND CONDITIONS LAUNDRY APPLIANCES

This document sets out the terms and conditions of the product warranties for Residentia Group Appliances. It is an important document. Please keep it with your proof of purchase documents in a safe place for future reference should you require service for your Appliance.

1. **IN THIS WARRANTY**
 - (a) 'acceptable quality' as referred to in clause 10 of this warranty has the same meaning referred to in the ACL;
 - (b) 'ACL' means Trade Practices Amendment (Australian Consumer Law) Act (No.2) 2010;
 - (c) 'Appliance' means any Residentia Group product purchased by you accompanied by this document;
 - (d) 'ASR' means Residentia Group authorised service representative;
 - (e) 'Residentia Group' means Residentia Group Pty Ltd of 118 Campbell St, Collingwood VIC, ACN 600 546 656 in respect of Appliances purchased in Australia;
 - (f) 'major failure' as referred to in clause 10 of this warranty has the same meaning referred to in the ACL and includes a situation when an Appliance cannot be repaired or it is uneconomic for Residentia Group, at its discretion, to repair an Appliance during the Warranty Period;
 - (g) 'Warranty Period' means:
 - (i) where the Appliance is used for personal, domestic or household use (i.e. normal single family use) as set out in the instruction manual, the Appliance is warranted against manufacturing defects for 24 months, following the date of original purchase of the Appliance;
 - (h) 'you' means the purchaser of the Appliance not having purchased the Appliance for re-sale, and 'your' has a corresponding meaning.
2. This warranty only applies to Appliances purchased and used in Australia and is in addition to (and does not exclude, restrict, or modify in any way) any non-excludable statutory warranties in Australia.
3. During the Warranty Period Residentia Group or its ASR will, at no extra charge if your Appliance is readily accessible for service, without special equipment and subject to these terms and conditions, repair or replace any parts which it considers to be defective. Residentia Group or its ASR may use remanufactured parts to repair your Appliance. You agree that any replaced Appliances or parts become the property of Residentia Group. This warranty does not apply to light globes, batteries, filters or similar perishable parts.
4. Parts and Appliances not supplied by Residentia Group are not covered by this warranty.

-
5. You will bear the cost of transportation, travel and delivery of the Appliance to and from Residentia Group or its ASR. If you reside outside of the service area,
you will bear the cost of:
- (a) travel of an authorised representative;
 - (b) transportation and delivery of the Appliance to and from Residentia Group or its ASR, in all instances, unless the Appliance is transported by Residentia Group or its ASR, the Appliance is transported at the owner's cost and risk while in transit to and from Residentia Group or its ASR.
6. Proof of purchase is required before you can make a claim under this warranty.
7. You may not make a claim under this warranty unless the defect claimed is due to faulty or defective parts or workmanship. Residentia Group is not liable in the following situations (which are not exhaustive):
- (a) the Appliance is damaged by:
 - (i) accident
 - (ii) misuse or abuse, including failure to properly maintain or service
 - (iii) normal wear and tear
 - (iv) power surges, electrical storm damage or incorrect power supply
 - (v) incomplete or improper installation
 - (vi) incorrect, improper or inappropriate operation
 - (vii) insect or vermin infestation
 - (viii) failure to comply with any additional instructions supplied with the Appliance;
 - (b) the Appliance is modified without authority from Residentia Group in writing;
 - (c) the Appliance's serial number or warranty seal has been removed or defaced;
 - (d) the Appliance was serviced or repaired by anyone other than Residentia Group, an authorised repairer or ASR.
8. This warranty, the contract to which it relates and the relationship between you and Residentia Group are governed by the law applicable where the Appliance was purchased.
9. To the extent permitted by law, Residentia Group excludes all warranties and liabilities (other than as contained in this document) including liability for any loss or damage whether direct or indirect arising from your purchase, use or non use of the Appliance.
10. For Appliances and services provided by Residentia Group in Australia, the Appliances come with a guarantee by Residentia Group that cannot be excluded under the Australian Consumer Law. You are entitled to a replacement or refund for a major failure and for compensation for any other reasonably foreseeable loss or damage. You are also entitled to have the Appliance repaired or replaced if the Appliance fails to be of acceptable quality and the failure does not amount to a major failure. The benefits to you given by this warranty are in addition to your other rights and remedies under a law in relation to the Appliances or services to which the warranty relates.
11. At all times during the Warranty Period, Residentia Group shall, at its discretion, determine whether repair, replacement or refund will apply if an Appliance has a valid warranty claim applicable to it.
12. To enquire about claiming under this warranty, please follow these steps:
- (a) carefully check the operating instructions, user manual and the terms of this warranty;
 - (b) have the model and serial number of the Appliance available;
 - (c) have the proof of purchase (e.g. an invoice) available;
 - (d) telephone the numbers shown below.
13. You accept that if you make a warranty claim, Residentia Group and its ASR may exchange information in relation to you to enable Residentia Group to meet its obligations under this warranty.

IMPORTANT

Before calling for service, please ensure that the steps in point 12 have been followed.

CONTACT SERVICE

→ Please call 1300 11 HELP (4357)



E2447

Esatto

Appliances

Exactly what
you need



A RESIDENTIA
GROUP INITIATIVE