

Specifications

It is a requirement of State Plumbing Codes that licensed plumbers carry out all tapware installations. All installations should comply with the relevant requirements of AS/NZS 3500 and local plumbing codes.

Pressure:

[1] Maximum Hydrostatic Pressure: 1000kpa. This pressure may be exceeded only under test conditions as per AS/NZS 3500. Where hydrostatic pressure exceeds the maximum stated above, pressure-limiting valves should be installed. [2] Recommended Maximum Hydrostatic Pressure: 500kpa (AS/NZS 3500). [3] Recommended Minimum Hydrostatic Pressure: 150kpa

Temperature:

Maximum Water Temperature: 80° C. For optimum performance, hot and cold inlet water pressure should be equal.

Care and Maintenance

[1] Product should be inspected for surface damage prior to installation. [2] Cleaning and handling of all finishes must be performed carefully. [3] Clean products using a soft cloth with warm soapy water only. [4] Never use harsh detergents or abrasive cleaners as these will damage the product. [5] Water marks can be removed from Matt Finishes with an application of a carnauba wax based non-abrasive polish on a microfibre cloth. [6] Do not use undue pressure when cleaning and wipe in one direction only. [7] Contact with harsh chemicals such as hair dye, hair bleach etc with result in damage to the finish. [8] Tapware should never be installed using acetone silicones. [9] Avoid the use of wax based furniture creams as this can result in a build up of deposits which will detract from the appearance. [10] Rose Copper: A protective lacquer has been applied to this finish. This is required to maintain the stability of this finish and will be damaged if the above care and cleaning instructions are not followed. [11] Damage to finishes arising from improper installation or post installation use or failure to observe the above care and cleaning instructions will void all warranty agreements.

Warranty

Rogerseller tapware, bathroom fittings and sanitary ware are covered by a five (5) year warranty from date of purchase. For full terms and conditions please refer to rogerseller.com.au

rogerseller



rogerseller.com.au

Pinch
by Rogerseller

Wall Top Assembly

Installation
Instructions

rogerseller

Pinch by Rogerseller

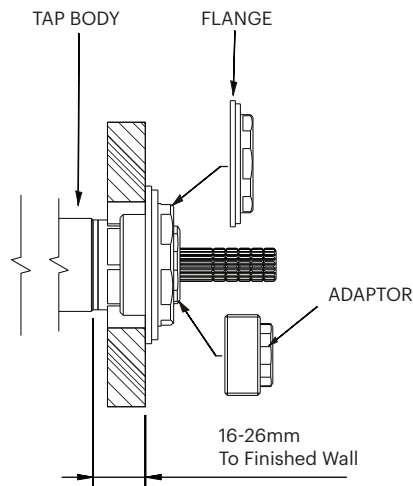


Fig. 1

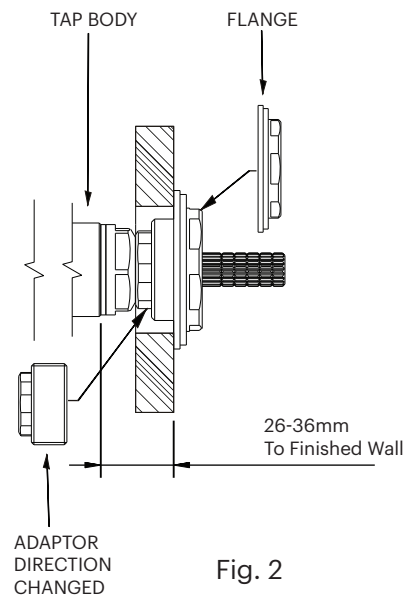


Fig. 2

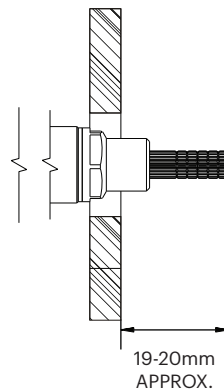
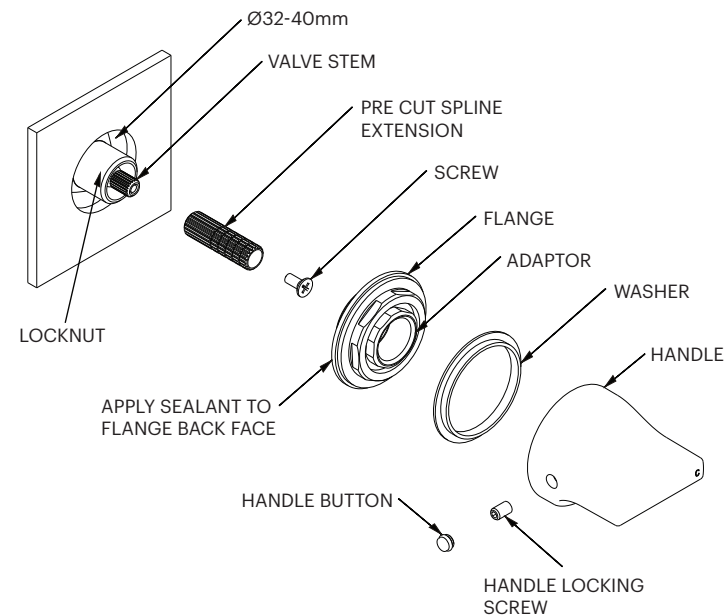


Fig. 3



Pinch by Rogerseller

Wall Top Assembly

3606004301 — Chrome

Wall Basin Set

3606017101 — Chrome

Wall Bath Set

3606017201 — Chrome

Other finishes available

Installation

1. The finished wall hole size must be $\varnothing 32\text{-}\varnothing 40\text{mm}$. Set the wall breach in the wall, minimum 16mm to maximum 36mm depth from the finished wall surface. Note: 16-26mm (see Fig. 1) or 26-36mm (see Fig. 2) to finished wall for correct installation.
2. Separate the ceramic cartridge and the locknut. Screw the cartridge into the wall breach until it screws up against the seat of the tap. Using a 15mm spanner, do not use multi grips or adjustable wrench, grip the cartridge on its hexagonal flats and turn in a clockwise direction until the cartridge comes to a firm stop, no more than 1/8th of a turn. NOTE: Do not over tighten; do not use the end of the spindle to tighten the cartridge.
3. Fit the fibre washer around cartridge and against the face of the wall breach. Fit the cartridge locknut by hand onto the cartridge up to the face of the wall breach. Tighten the cartridge locknut using a 25mm tube spanner, ensure not to over tighten.
4. Place the spline extension on the valve stem of the ceramic cartridge making sure that the internal spline has correctly engaged the ceramic valve. The spline extension may need to be cut depending on the position of the tap body. Measure 19-20mm from the finished wall and cut through the spline extension as shown in Fig. 3. With the cartridges in the off position, fit the modified spline extension to valve stem and tighten screw. Note: Place the handle on the spline extension to check correct handle orientation.
5. Screw the flange onto the adaptor clockwise until it stops. This adaptor can be fitted either way to accommodate the depth of breach shown in Fig. 1 and Fig. 2. Apply flexible sealant to the base of the flange; screw the adaptor with flange together onto the locknut until flange is flush with the wall.
6. Ensure washer is correctly fitted over flange. Position each handle onto the appropriate Spline, tightening the Locking screw with 2.5mm Allen key supplied. Push the handle button into the handle. Note: To remove the handle, push the button inside the handle and un-screw the handle locking screw. Button can be recovered once handle is removed.