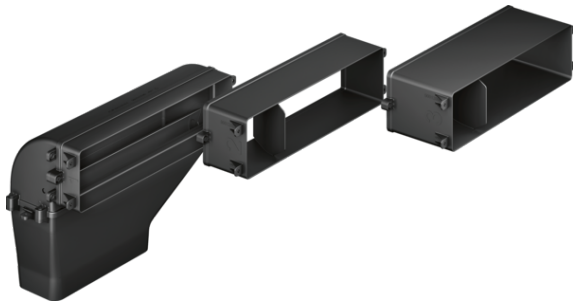


Accessory for ducted extraction HZ381401



Features

Technical Data

Dimensions of the packed product (HxWxD) (mm) : 160 x 590 x 765

Pallet dimensions : 175 x 80 x 120

Standard number of units per pallet : 20

Net weight (kg) : 3.457

Gross weight (kg) : 3.8

EAN code : 4242003827697



HZ381401 Extraction module
Accessory for ducted extraction

Features

- # Direct air outlet onto 220x90mm flat duct system or with 90° diverter element and outlet for continuation of ducting with 220x90mm flat duct. system.
- # Includes:
3 mountable depth adapters (40mm, 80mm, 120mm) for different worktop depths from 600mm to 750mm, 90° diverter element, connector element for continuation with 220x90mm flat ducting.