

Specifications

It is a requirement of State Plumbing Codes that licensed plumbers carry out all tapware installations. All installations should comply with the relevant requirements of AS/NZS 3500 and local plumbing codes.

Pressure:

[1] Maximum Hydrostatic Pressure: 1000kpa. This pressure may be exceeded only under test conditions as per AS/NZS 3500. Where hydrostatic pressure exceeds the maximum stated above, pressure-limiting valves should be installed. [2] Recommended Maximum Hydrostatic Pressure: 500kpa (AS/NZS 3500). [3] Recommended Minimum Hydrostatic Pressure: 150kpa

Temperature:

Maximum Water Temperature: 80° C. For optimum performance, hot and cold inlet water pressure should be equal.

Care and Maintenance

[1] Product should be inspected for surface damage prior to installation. [2] Cleaning and handling of all finishes must be performed carefully. [3] Clean products using a soft cloth with warm soapy water only. [4] Never use harsh detergents or abrasive cleaners as these will damage the product. [5] Water marks can be removed from Matt Finishes with an application of a carnauba wax based non-abrasive polish on a microfibre cloth. [6] Do not use undue pressure when cleaning and wipe in one direction only. [7] Contact with harsh chemicals such as hair dye, hair bleach etc will result in damage to the finish. [8] Tapware should never be installed using acetone silicones. [9] Avoid the use of wax based furniture creams as this can result in a build up of deposits which will detract from the appearance. [10] Rose Copper: A protective lacquer has been applied to this finish. This is required to maintain the stability of this finish and will be damaged if the above care and cleaning instructions are not followed. [11] Damage to finishes arising from improper installation or post installation use or failure to observe the above care and cleaning instructions will void all warranty agreements.

Warranty

[1] All Rogerseller tapware, bathroom fittings and sanitaryware are covered by a five (5) year warranty from date of purchase. Tapware cartridges are covered by a five (5) year parts and labour warranty plus an additional five year (5) parts warranty. [2] Due to the manufacturer's conditions, the warranty on flexible hoses, cistern mechanisms and soft close seats is 12 months parts and labour from date of purchase. [3] We will repair or replace free of charge any faulty product due to defects in materials or workmanship within the warranty period. We, or our nominated agency, reserve the right to assess, repair, replace or service any warranty claims as we see fit. [4] Claims shall be void where the ceramic cartridge has malfunctioned due to the presence of any of the below in the water supply:

- Copper tube pieces
- Sand, dirt or stones
- Thread tape
- Other objects not normally presented in potable water supplies

[5] For full terms and conditions please refer to rogerseller.com.au

Rogerseller Showrooms —

Melbourne

173-177 Barkly Avenue
Burnley VIC 3121
P 03 9429 8888

Sydney

18 Danks Street
Waterloo NSW 2017
P 02 8396 8700

Brisbane

74-76 McLachlan Street
Fortitude Valley QLD 4006
P 07 3251 4333

Perth

153 Broadway
Nedlands WA 6909
P 08 6389 1366

Concept Stores —

Southern Innovations

Canberra ACT:
P 02 6126 1155

Albury NSW:
P 02 6049 3355

NCP Bathroom Centres

Noosaville QLD:
P 07 5449 7577

Maroochydore QLD:
P 07 5443 2522

Caloundra QLD:
P 07 5491 4422

Vogue Spas & Bathrooms

Southport QLD
P 07 5528 0077

Routleys Plumbing Innovations

Malvern SA
P 08 8291 3000

rogerseller.com.au

RAM
TAPWARE



reddot design award
winner 2017



Eccentric by Rogerseller

Wall Mixer

Installation Instructions

rogerseller

Eccentric by Rogerseller

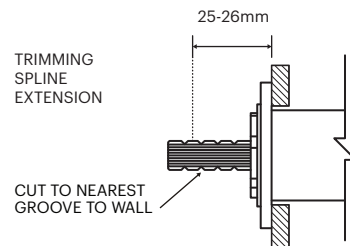


Fig 1

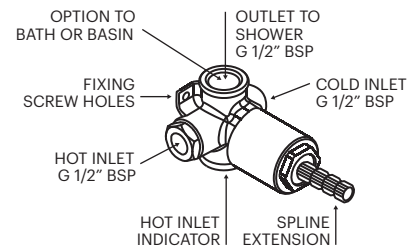


Fig 2

⚠ MIXER BODY MUST BE INSTALLED LEVEL AND PARALLEL TO WALL THE OUTLET MUST BE VERTICAL FACING UPWARDS

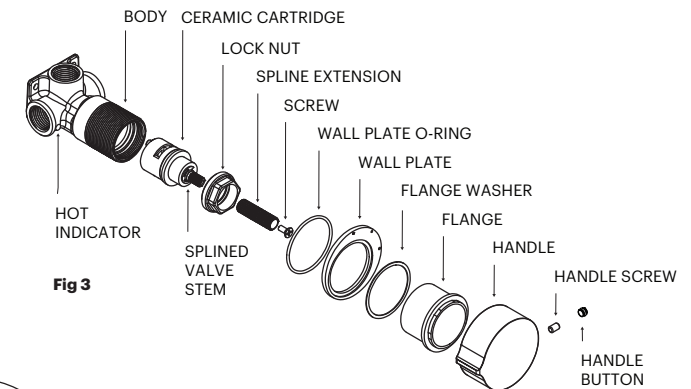


Fig 3

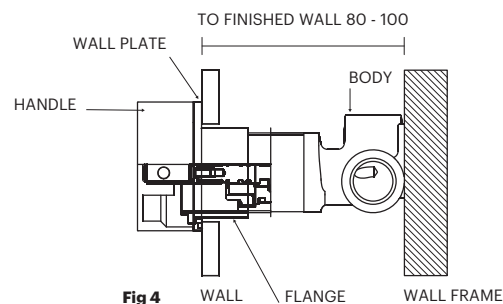


Fig 4

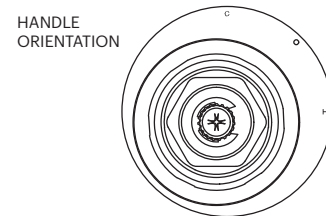
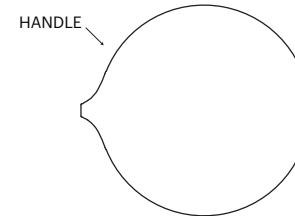


Fig 5



Eccentric by Rogerseller Wall Mounted Progressive Mixer 3606002501 — Chrome

11 finishes available

1. Checklist

- Flush to remove any foreign matter from plumbing lines.
- Ensure mixer is in the closed position during installation and testing.
- In-line filters are recommended to ensure clean flow of water to the mixer.

2. Mounting

- When mounting the body onto the wall frame, take note of the dimensions shown so the mixer is correctly positioned with the finished wall.

Min/Max: 80-100mm
Diameter hole: 42-55mm
Mixer body must be installed level and parallel with the wall

and outlet vertical facing upwards to ensure correct handle orientation.

3. Water Supply

- Connect water supply to points as illustrated in Fig 2. Do not apply heat to the mixer or pipework connected near the mixer. Damage to the ceramic cartridge caused by heat will void the warranty.

4. Fit Off

- To complete fit off, carry out actions in sequential order.

1. Install the spline extension onto the valve stem.
2. Trimming spline extension - Measure 25-26mm from the finished wall and cut through groove nearest to the wall. Refer to Fig 1.

3. Place the wall plate with o-ring over the body making sure the "C" & "H" located correctly as shown in Fig 5.

4. Place flange washer over the flange and screw flange on the body through the wall plate clockwise until wall plate flush with the finished wall as shown in Fig 4.

5. Locate the handle and tighten handle screw with 2.5mm Allen key.

6. If the handle is not perfectly horizontal, remove the handle and make a mark on both the valve stem and spindle extension. Remove the spline extension and reposition by rotating either one notch, 90 or 180 degrees. Repeat and secure spline extension.

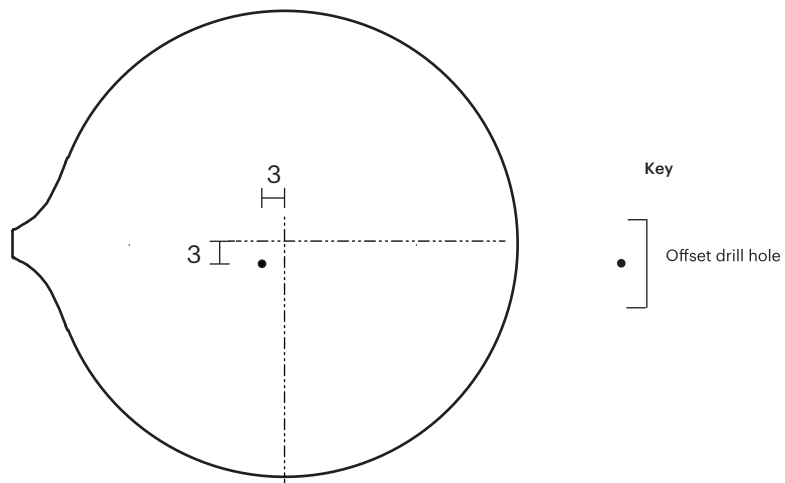
7. Tighten handle screw clockwise with 2.5mm Allen key supplied and push in screw button until flush with handle.
 Note: to remove handle, push the button into handle to access screw.

5. Flushing

- Prior to introducing mains supply it is mandatory that lines are flushed. Open handle in the mixed position - midway between 'C' & 'H' and ensure aerator is removed from outlet.

Eccentric by Rogerseller

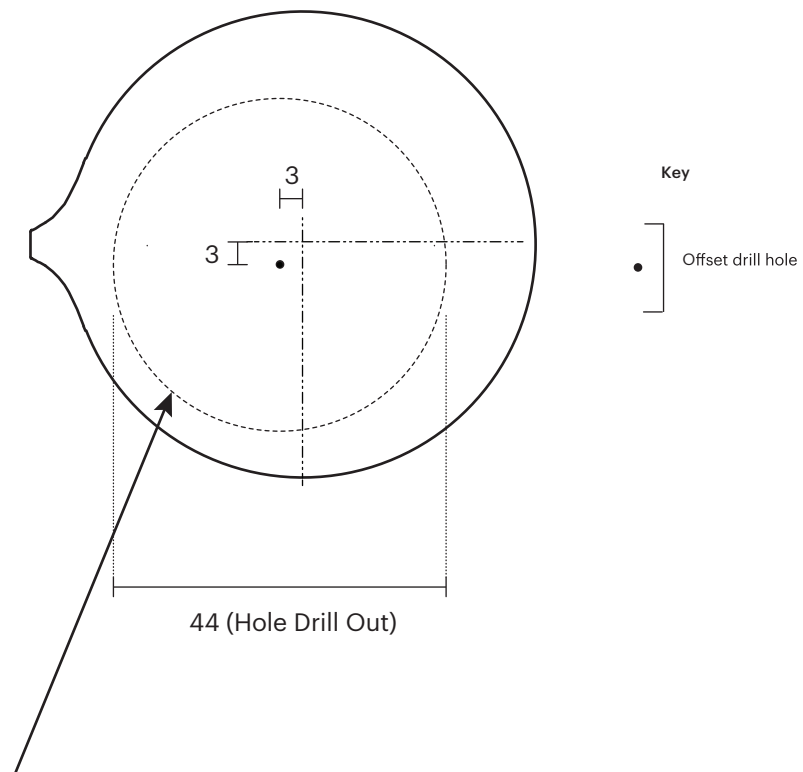
Plumbers Template (Mixer Orientation)



NOTE: Ensure if pairing with outlet to note offset nature of handle when roughing-in. Please refer to handle orientation and template for offset location.

Eccentric by Rogerseller

Tilers Template (Hole Cut Out)



NOTE: Minimum tolerances apply to hole cut out