

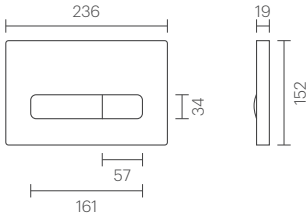
Peak by Rogerseller

06 . 22



Peak by Rogerseller

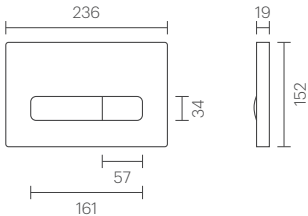
Designed by Rogerseller, Peak presents a unique push plate design paired with a Hidden pneumatic cistern. The contours of the buttons present a pleasing aesthetic, the larger convex button symbolizing full flush, the smaller concave half flush.



**Peak by Rogerseller
Dual Flush Push Plate
232007 — Chrome**

- ABS plate provides access for servicing

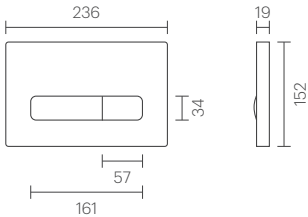
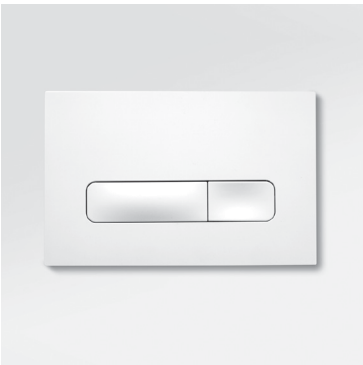
❗ See opposite and last page for cistern details.



**Peak by Rogerseller
Dual Flush Push Plate
232008 — Matt Black**

- ABS plate provides access for servicing

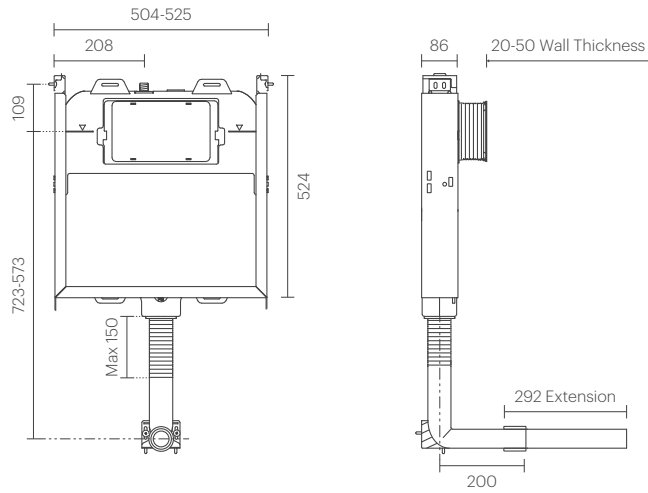
❗ See opposite and last page for cistern details.



**Peak by Rogerseller
Dual Flush Push Plate
232009 — Matt White**

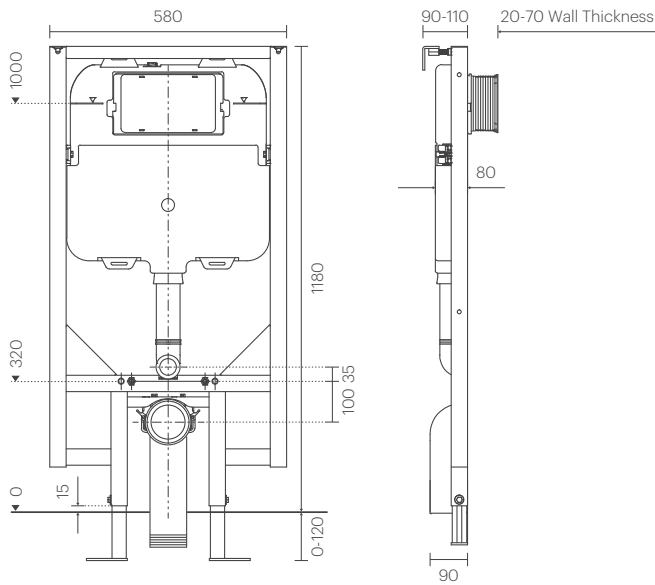
- ABS plate provides access for servicing

❗ See opposite and last page for cistern details.



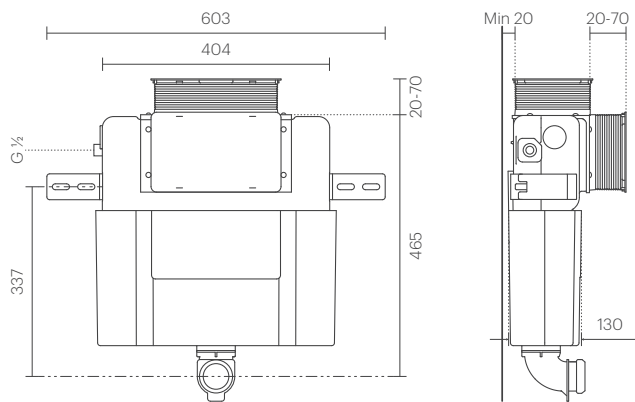
Hidden In-wall Pneumatic Cistern 160210

- Suits floor mounted BTW pans
- Flush plate provides front access for servicing
- Manufactured from high quality Stainless Steel
- No visible fixings
- Fits in 90mm wall cavity
- Fully insulated against condensation
- One piece flush pipe, to avoid leaks
- All fittings supplied including quick mounting bracket for easy installation
- WELS Rating: 4 Star, 4.5 litres full flush, 3 litres half flush, 3.5 litres average flush, Reg# L05555



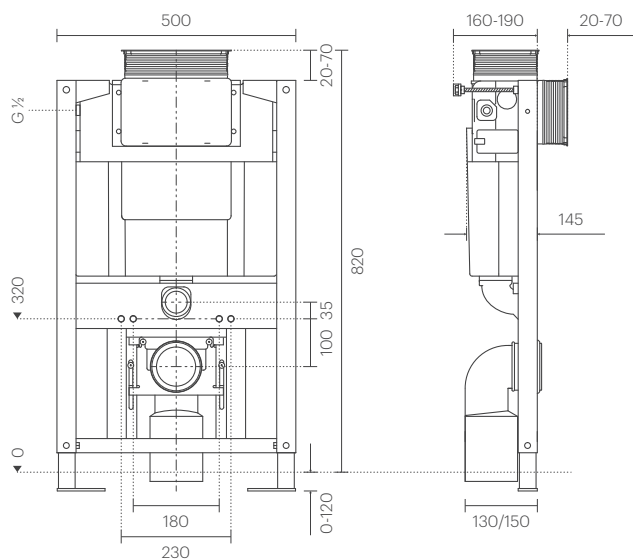
Hidden In-wall Pneumatic Cistern with Frame 160220

- Suits wall hung pans
- Flush plate provides front access for servicing
- Manufactured from high quality Stainless Steel
- No visible fixings
- Fits in 90mm wall cavity
- Fully insulated against condensation
- One piece flush pipe, to avoid leaks
- All fittings supplied including quick mounting bracket for easy installation
- WELS Rating: 4 Star, 4.5 litres full flush, 3 litres half flush, 3.5 litres average flush, Reg# L05555



Hidden Underbench Pneumatic Cistern 160230

- Suits floor mounted BTW pans
- Flush plate provides front access for servicing
- Manufactured from high quality Stainless Steel
- No visible fixings
- Fits in 160mm wall cavity
- Access through front or top panel
- Fully insulated against condensation
- All fittings supplied for easy installation
- WELS Rating: 4 Star, 4.5 litres full flush, 3 litres half flush, 3.5 litres average flush, Reg# L04648



Hidden Underbench Pneumatic Cistern with Frame 160240

- Suits wall hung pans
- Flush plate provides front access for servicing
- Manufactured from high quality Stainless Steel
- No visible fixings
- Fits in 160mm wall cavity
- Access through front or top panel
- Fully insulated against condensation
- All fittings supplied for easy installation
- WELS Rating: 4 Star, 4.5 litres full flush, 3 litres half flush, 3.5 litres average flush, Reg# L04648