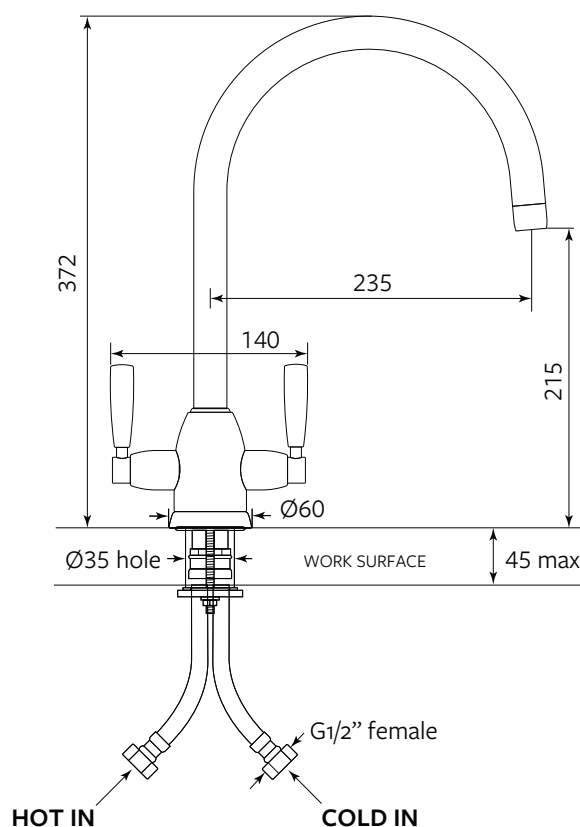


Silverdale

AUSH.4861



MODEL	CODE
Silverdale - Chrome	AUSH.4861CP-3
Silverdale - Nickel	AUSH.4861NI-3
Silverdale - Pewter	AUSH.4861PF-3
Silverdale - English Bronze	AUSH.4861EB-3
Silverdale - Satin Brass	AUSH.4861SB-3
Silverdale - Polished Brass	AUSH.4861BR-3
Silverdale - Gold	AUSH.4861IG-3

Also Available: Silverdale with Spray Rinse (AUSH.4866) Please note, spray rinse cannot be added to the standard mixer later.



Features include:

- Handcrafted in the United Kingdom using premium low-lead brass
- Metal lever handles with engraved temperature indicators
- 1/4 turn German ceramic disc flow control
- Vernier insert for accurate handle alignment
- 15 Year warranty. Please visit our website for individual finish warranties

Temperature range: Min 1°C. Max 70°C

Working Pressure: Min 1 Bar/15psi. Max 5 Bar/75psi

Packed Weight: 2.99kg

Flow Rates: 1 Bar: 8.2L/min

2 Bar: 11.4L/min

3 Bar: 14.4L/min

