

ATTENZIONE/ATTENTION

Dati cliente/final customer address

Nome/name

Indirizzo/address

Cap/zip

Città/city

Stato/country

Autorizzazione ai sensi della legge 675/96
sulla tutela dei dati personali / Consent
to use your personal data information complying
with privacy law 675/96.

Firma

BUGATTI®



Ilcar di Bugatti S.r.l.
via Industriale, 69
25065 Lumezzane (BS)-Italia
tel.+39.030.89.82.90
fax +39.030.89.28.250
www.casabugatti.com
diva@casabugatti.it



Manuale d' istruzioni

Owner's Guide

Manuel d'instructions

Bedienungsanleitung

Instrucciones para el uso

Manual de instruções

Gebruiksaanwijzing

Инструкция по применению

Návod k použití

Manual de instrucțiuni

Käyttöohjeet

ΟΔΗΓΙΕΣ ΧΡΗΣΗΣ

Bruksanvisning

Brugsanvisning

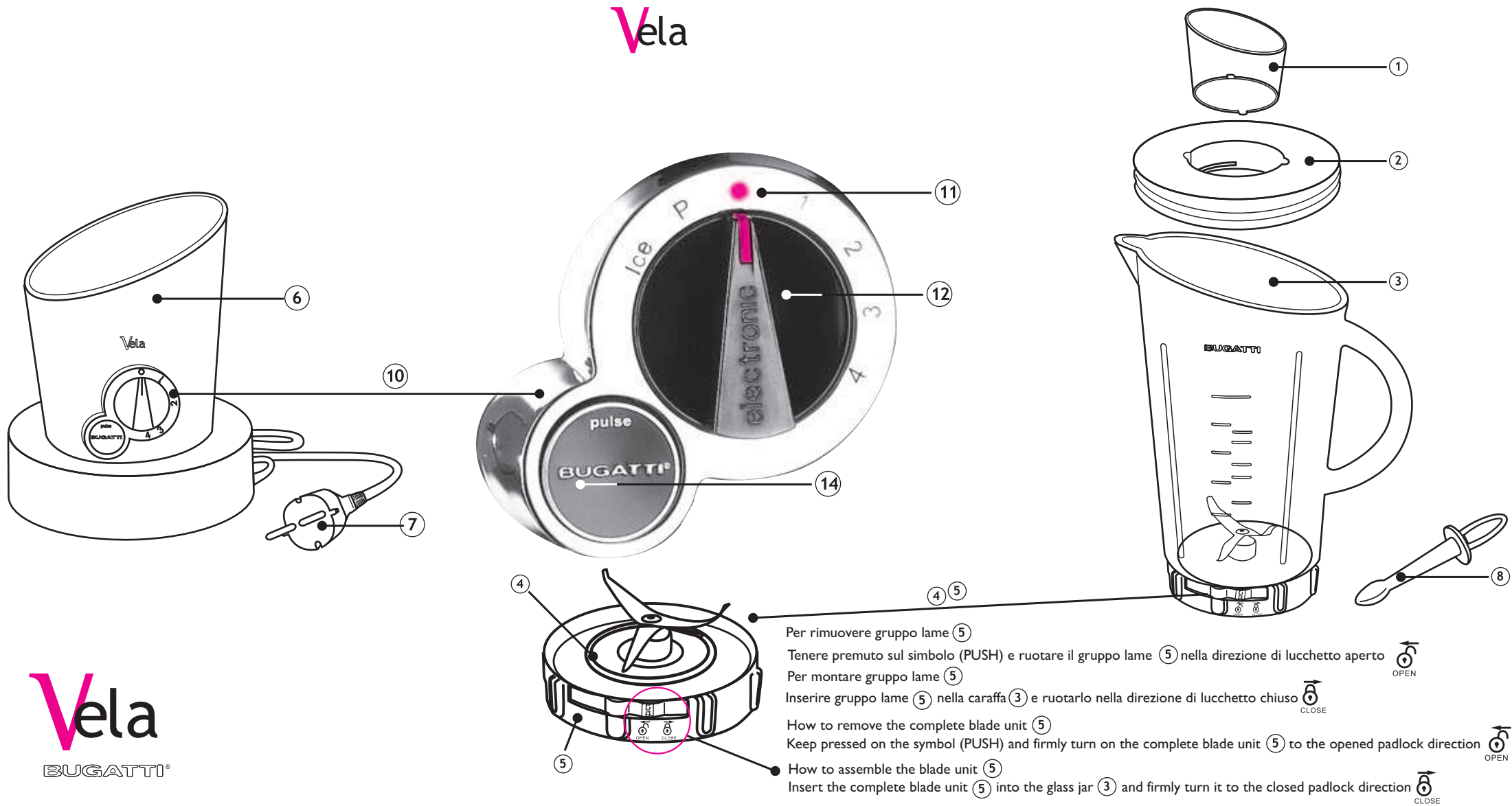
用户指南

Vela
BUGATTI®

BUGATTI®

Vita
Uma
Vera
Vela
Volo
BUGATTI®





Vela
BUGATTI®

Timbro/Nome/Indirizzo rivenditore
Retailer stamp/name and address

Numero documento fiscale e data acquisto:
Number and/or date of receipt of payment:

BUGATTI®

**GARANZIA
WARRANTY
GARANTIE
GARANTÍA
GARANTIA**
Ποσепpоdожное обслуживание
**ZÁRUKA
TAKUÚ**
Εγγύηση 2 Ετών
GARANTI
Ποσепpоdожное обслуживание
الضمان

etichetta matricola

IMPORTANT NOTICES

Dear Customer,
thank you for choosing Vela, the blender from Casa Bugatti. Like any domestic appliance, this blender must be used with care and attention to prevent people getting injured and the blender getting damaged.

**BEFORE USING THE BLENDER FOR THE FIRST TIME,
READ ALL THE INSTRUCTIONS ON INSTALLATION,
USE AND MAINTENANCE AND THE SAFETY
INSTRUCTIONS CAREFULLY.
DO NOT USE THE BLENDER UNLESS YOU ARE
THOROUGHLY FAMILIAR WITH THE INSTRUCTIONS.
WARNING**

No liability is accepted for damage due to:

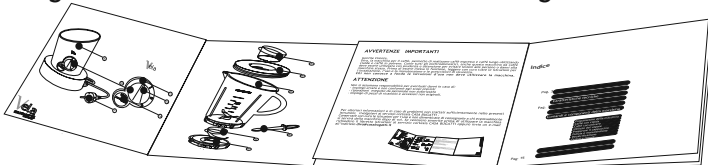
- incorrect use or use other than for its intended purpose
- running any blender function whilst the blender is empty
- repairs carried out by unauthorized persons
- use of non-original spare parts or accessories
- plug-in Vela Blender in a non-earthed socket

Instructions for use

For further information, or in the event of problems that have not been sufficiently addressed in these instructions, contact Customer Care at CASA BUGATTI.

SAVE THESE INSTRUCTIONS CAREFULLY and remember to pass them on to those who will use the blender after you. If the instructions are lost before you use the blender, request the instruction booklet from Customer Care at CASA BUGATTI or send an e-mail to diva@casabugatti.it or download it from www.casabugatti.it

On the first page of the cover you will find the illustrations relating to the text. Keep the first page open as you read the instructions on use.



Index

Pag. 17	Specification
Pag. “	Description of blender parts
Pag. “	Blender controls
Pag. 18-21	Important safeguards
Pag. 22-24	Installation and starting up
Pag. 24-27	Advice and recommendation on use
Pag. 24-25	4 speeds
Pag. 25	Pulse function
Pag. 25-26	Ice Function (ICE)
Pag. 26	Filler cup and stir stick
Pag. 27	Cleaning and maintenance
Pag. 27	Troubleshooting

Pag. 28	Warranty
---------	----------

All the details of the text have been carefully checked. Our company reserves the full right to explain the elaboration of the text if there is any printing error or misleading information. Note: Please be reminded that our company keeps updated every product detail shown on the instruction book, including technical specification. We reserve to revise the instruction book without prior notice. All product's outlook, shape and color are based on the standard of actual physical products.

Specifications

Power supply	See rating plate underneath appliance
Power rating	See rating plate underneath appliance
Dimensions	17 x 22 h 42 cm approximately
Body	Chrome-plated cast zinc alloy base and chrome-plated/coloured abs body; PC Tritan BPA-free jar
Weight	4.2 g approx
Length of power cable	1.0 metres approximately
Incorporated thermal overload protection	

Description of blender parts

Ingredient measuring filler cup	①
Lid	②
PC Tritan BPA-free jar, 1.5 litres - 50 onzs	③
Seal	④
Complete blade unit	⑤
Motor base body	⑥
Cable with plug	⑦
Stir stick	⑧

Blender controls

Control dial	⑩
Power on/off warning light	⑪
Speed selector	⑫
a) ice=ice function	
b) pulse=pulse function	
c) 0=off	
d) 1= low speed	
e) 2= medium speed	
f) 3=high speed	
g) 4=maximum speed	
Pulse button for high speed	⑭

IMPORTANT SAFEGUARDS


READ ALL INSTRUCTIONS CAREFULLY. THE APPLIANCE MUST BE USED ONLY BY ADULTS WHO HAVE BEEN TRAINED IN ITS USE. KEEP THESE INSTRUCTIONS.

1. TO PREVENT SERIOUS INJURIES, ELECTRIC SHOCKS AND FIRE DO NOT IMMERSE CABLES, PLUGS, OR THE BLENDER ITSELF IN WATER OR OTHER LIQUIDS, EITHER PARTIALLY OR TOTALLY

HOUSEHOLD USE ONLY. 2. The blender has been designed for **HOUSEHOLD USE ONLY.** Use the blender only for its intended use. Do not make any technical modifications.

3. Close supervision is necessary when any appliance is used near children. This appliance shall not be used by children. Keep the appliance and its cord out of reach of children. Appliances can be used by persons with reduced physical, sensory or mental capabilities or lack of experience and knowledge if they have been given supervision or instruction concerning use of the appliance in a safe way and if they understand the hazards involved.


The blender must be used only by adults who know how to use it in accordance with these instructions.

4. Never touch live electrical parts. They may cause electric shocks and serious personal injury. Connect the blender to a wall socket having the appropriate voltage. The voltage must correspond to the voltage indicated on the rating plate underneath the appliance. **Make sure that the socket that you are using is grounded** (). Do not use the blender with bare or wet feet.

5. **Figure A:** power cable with plug. A short power cable with plug is supplied. Long detachable power cords or extension cables should not be used **only if a QUALIFIED ELECTRICIAN can confirm that they comply with wiring regulations.** DO NOT USE plug/socket adapters.

If a long detachable power cable or extension cable is used:

a) The electrical rating of the detachable power cable or extension cable should be at least as great as the electrical rating of the blender indicated underneath the blender itself.

b) The extension cable must be of the 3-wire/pole type and must be grounded ().

A long cable or extension cable must never protrude from furniture or over counter tops or table tops where it may be pulled on by children or tripped over.

IMPORTANT SAFEGUARDS

- c) Do not place blender or cables on or near a hot gas range or electric hotplate, or in or near the oven.
- d) Do not use outdoors.
- e) Do not let the cables hang over the edge of the table or counter, or touch hot surfaces.
- f) Do not operate the blender after it has developed faults, or has been damaged in any manner. Return appliance to the nearest authorized service facility for examination or repair.
- g) If the power cable or plugs are damaged, they must be replaced by the manufacturer or with authorized service centre or by a qualified person in order to prevent all risks. Using accessories that have not been recommended by the manufacturer may cause fires, electric shocks and personal injury.
- h) The Vela blender is provided with a base designed to accommodate the electric cable. This enables the length of cable to be adjusted to prevent it from being an obstacle during operation

6. Fig. B: make sure that children cannot play with the blender. Children are not aware that electrical appliances are dangerous. Cleaning and user maintenance should not be made by children without supervision.

7. Place the blender on a flat surface, making sure that the feet rest firmly on the flat surface so that the blender is stable. **CAUTION:** Do not operate the blender on an inclined plane. Do not position the blender on hot surfaces or near open flames.

8. Fig. C.: Do not place kitchen utensils or other implements in the jar when the blender is on. Placing any utensil in the jar whilst the blender is running may cause serious personal injury or irreparable harm to the blender. A spatula may be used only when the blender is switched off and the plug (7) is removed from the socket.

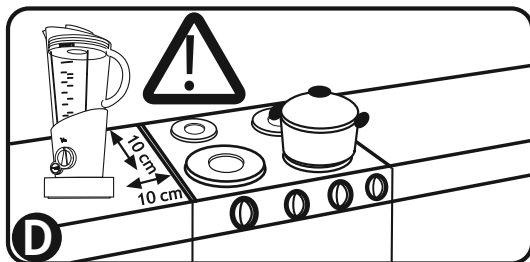


IMPORTANT SAFEGUARDS

9. Fig. D: In order to ensure that the blender works properly, place it on a level surface, in a well-lit and hygienic room near to a power socket. Keep the blender at least 10 cm (4 inches) away from the wall.

10. Remove the plug (7) from the power socket when the blender is not in use and before removing any part and before cleaning.

11. Fig. E: Never touch the blender, for any reason, with wet or damp hands or with a damp or wet cloth. Always unplug the appliance if it is not used and before cleaning. Never pull on the cable to remove the plug. Always remove the plug before removing and fitting different parts. The blender must be cleaned with a dry or slightly damp non abrasive cloth, adding a few drops of non-corrosive neutral detergent (never use solvents). Clean only and exclusively the outside surfaces of the blender.



12. The blender must always be supervised whilst it is in use.

13. Always put a hand on the upper part of the lid (always wear oven gloves before blending hot foods or liquids) when the blender is running.

14. On no account run the 4 speeds or the pulse function with the jar empty as you could damage the mechanical parts of the complete blade unit (5)

15. Do not insert ingredients and food beyond the maximum permitted capacity of 1.5 litres (50 ounces).

16. WARNING : always add first liquid ingredients and then solid ingredients. This enables better and consistent blending to be obtained and prevents the motor from getting overloaded.

17. Do not touch moving parts.

18. The blades are sharp. Handle with extreme caution. Care is needed when handling cutting blades, especially when removing the blade from the bowl, emptying the bowl and during cleaning.

19. Never leave the blades (5) soaking in water and never leave liquid inside the jar (3) for a long time.

20. To prevent grave personal injury and irreparable damage to the blender, never position the complete blade unit (5) on the base body (6) unless the jar (3) has been fitted completely.

21. Make sure that the jar (3) is well lodged in the base (6) and that the lid (2) with measuring filler cup (1) is well fixed to the jar before using the blender.

22. To prevent personal injury and damage to the appliance, never remove the jar (3) from the base (6) blades have come to a complete stop.

IMPORTANT SAFEGUARDS

- 23. The lid (2) and measuring filler cup (1) must always be in position when the blender is running.
 - 24. Never use your hands to insert food. Use the measuring filler cup or appropriate utensils to pour or insert food into the jar.
 - 25. Do not attempt to remove the safety devices: you could cause serious personal injury or severely damage the blender.
 - 26. Always start blending at a low speed and increase speed only if necessary.
 - 27. **Never leave the blender running (blending food) for more than 2 minutes** to prevent overheating. After each 2 minutes operating cycle, let the blender rest for at least 30 seconds. All types of food can be blended within a minute, especially liquids and small portions. The Vela Blender has an auto power-off function in order to avoid serious damages on the mechanical parts of the complete blade unit (5). After 3 minutes of continuous working the blender will stop automatically. To reset the function move the speed selector (12) to the zero (0) position and wait for 1 minute. In this way the blender starts to work again.
 - 28. The jar (3) is not for storing food. Always keep it empty and clean when not in use.
 - 29. For best results: cut food into cubes measuring approximately 1.8cm (3/4") by 2.5cm (1"). Cut cheese into pieces measuring no more than 1.3 cm (1/2 inch).
 - 30. Before blending hot liquids always remove the measuring filler cup (1)
 - 31. When blending hot liquids use oven gloves
 - 32. If you wish to make cold drinks from foods having high density, add an ice cube each time to reach the desired consistency. Use the pulse button (14) to obtain a better result.
 - 33. In the event of faults, defects or suspected defects after a fall, remove the plug immediately from the power socket. Never use the blender if it is faulty. Repairs must be carried out by CASA BUGATTI Service Centre. Contact your dealer and/or CASA BUGATTI Customer Care.
- Use a carbon dioxide (CO₂) extinguisher to fight fires. Do not use water or powder extinguishers.
34. Vela Blender is well equipped with an over-temperature automatic protection. This system will give much longer life to the motor of your blender. **Should the unit be overheated and stop functioning**, please unplug the unit and let it cold down for around 30-40 minutes. After cooling down the blender will be able to operate again normally.

Installation and starting up

The original package is designed for dispatch by post. Keep it in case you need to return the blender to the supplier. Before installing the blender **strictly follow all points of the safety instructions specified above.** After removing the blender from its package, check that it is in perfect condition and check that no type of material, packaging, warranty sheet or anything else has accidentally entered inside the housing of the motor base (6) and the jar (3) during transit or unpacking.

Keep the plastic bag containing the blender away from children: it may cause suffocation.

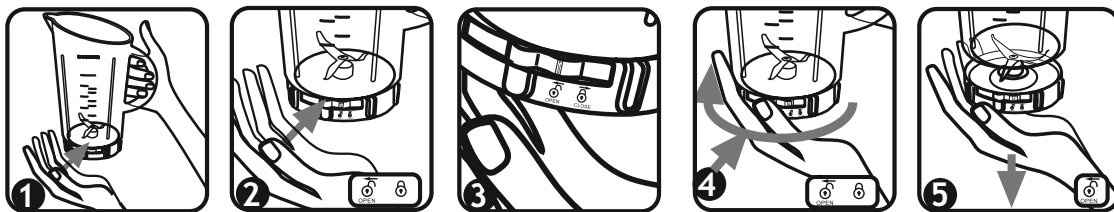
Do not plug in the blender until it has been correctly and completely assembled and always unplug the blender after use.

Before using for the first time, wash the measuring filler cup (1), lid (2), jar (3), seal (4) and the assembled blade unit (5). Wash with neutral, non-abrasive and non-corrosive detergents, rinse and dry carefully.

To remove the dust that may have accumulated on the motor base body (6) of the blender, simply wipe with a dry soft cloth.

How to remove the blade unit (5) from the Jar (3).

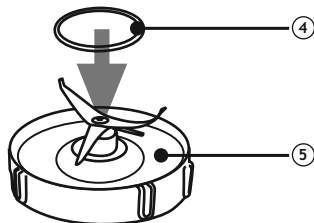
1) place one hand on the Jar base (3) (image 1), with the thumb press the lever in the point (PUSH) (image 2-3) and turn on the complete blade unit (5) to the opened padlock direction (image 4). Take out the blade complete unit from the Jar base (image 5).



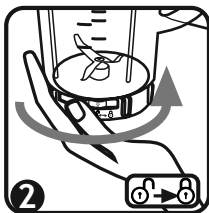
Installation and starting up

How to assemble the blade unit (5):

1) Insert the seal (4) correctly into its seat on the blade unit (5)

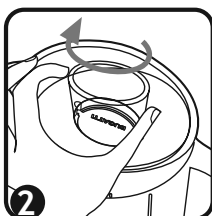
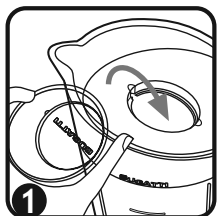


2) Insert the complete blade unit (5) into the Jar base (3) (image 1). To fix it turn the blade unit (already composed with the rubber gasket (4)), to the closed Padlock indicator direction, to achieve the complete locking position (image 2). The blender's glass Jar (3) is now perfectly composed with the complete blade unit (5) (image 3).



3) Position the assembled jar in the housing of the motor base (6)

4) Insert the measuring filler cup (1) into the central hole of the lid (2) and to secure it rotate it clockwise until you hear it click into the locked position.



Installation and starting up

- 5) Insert the lid (2) assembled with the filler cup (1) into the mouth of the assembled jar (3).
- 6) The blender has a safety lock that prevents the motor from being activated unless the blade unit (5) is perfectly assembled with the jar (3) before it is inserted into the motor base (6)
- 7) After making the above checks, and complying strictly with the safety instructions, connect to the mains power supply.

Connecting to the power supply: electric current can kill. Comply strictly with the safety instructions. The Vela blender must be connected via the power cable (7) to a socket the voltage of which complies with the voltage indicated on the rating plate under the blender.

Before unplugging the blender, make sure that it has come to a complete standstill. Check that the speed selector (12) is set at zero (0), wait for the current task to finish and then remove the plug from the wall socket. Never remove the plug from the socket by pulling on the cable.

Make sure that socket that you are using is grounded (⏚)

Never use defective or damaged cables.

Never allow parts carrying live voltage to come into contact with water: you may cause a short circuit!!! (adhere strictly to all points of the safety instructions specified above).

Advice and recommendations on use

A. Using functions with 4 speeds

- 1) Adhere strictly to all safety, installation and instructions specified above.
- 2) Make sure that the speed selector (12) is at zero (0) and then insert the plug (7) into the socket. Make sure that the your socket is adequately grounded (⏚)
- 3) Once the plug (7) has been plugged in the red light (11) comes on. This is an important signal that indicates that the blender is connected to the power supply and is therefore carrying live current.
- 4) Insert the jar (3), which has been assembled according to instructions, into the motor base (6).
- 5) Remove the lid (2) and measuring filler cup (1) from the jar (3).
- 6) Place the food that you are going to blend in the jar (3) (without exceeding the maximum permitted level of 1.5 litres - 50 onzs) and put the lid (2) complete with the measuring filler cup (1) back on the jar (3).
- 7) Cut the food into cubes measuring approximately 1.8 cm (3/4") by 2.5 cm (1 ") to obtain the ideal result
- 8) Hold the jar (3) handle firmly with one hand and turn the speed selector (12) to the desired speed (low=1, medium=2, high=3, maximum=4). **WARNING: always keep a hand on top of the lid whilst the motor is running.**
- 9) To switch off, turn the speed selector (12) to the zero (0) position.
- 10) Before removing the jar, disconnect the plug (7) from the socket. **WARNING: Do not pull on the cable to unplug.**
- 11) To remove the jar (3), take hold of the jar (3) by the handle and lift it up vertically to remove it from the motor base (6). To pour the blended food, remove the lid (2).

Advice and recommendations on use

12) Do not unscrew the jar (3) from the blade unit (5) until you wish to remove the blade unit (5) for cleaning. If you loosen the jar (3) from the blade unit (5), the jar is no longer tight. Do not loosen the blade unit (5) from the jar (3) while there is any liquid in the blender as this will cause the liquid to leak out of the bottom of the jar (3).

13) The speed can be increased or decreased by the speed selector (12) even during the blending phase to suit requirements.

14) When blending hot food or liquids wear oven gloves. Remove the measuring filler cup (1) and place the lid (2) on the mouth of the jar. Never put your bare hand on the lid when the blender is running with hot food or liquid inside the jar (3). In such cases, always work at minimum speed = 1.

15) Stop the blender after a few seconds to check the consistency of the food that you are blending.

16) The Vela Blender has an auto power-off function in order to avoid serious damages on the mechanical parts of the complete blade unit (5). After 3 minutes of continuous working the blender will stop automatically. To reset the function move the speed selector (12) to the zero (0) position and wait for 1 minute. In this way the blender starts to work again.

B. Using pulse function (pulse button (14))

1) Before using the blender, make sure that all parts of the jar and of the lid are perfectly assembled and fixed in place.

2) This function can be used at all speeds at which the blender is running. Press this button (14) to achieve maximum speed.

3) Rotate the speed selector (12) in the position "P". Only in this way the pulse function is activated. Then press the pulse button (14) to make the blades rotate at the maximum speed until the pulse button (14) is released.

4) When blending normally (setting speed on the speed selector (12)) you can press the pulse button (14) to obtain the maximum speed and keep this speed until you release the pulse button (14). Once the pulse button (14) is released, the blender will return to the speed set by the speed selector (12).

5) When blending hot food or liquids, wear oven gloves. Place the lid (2) over the mouth of the jar after removing the measuring filler cup (1). Never place your bare hand on the lid when the blender is running with hot food or liquid inside the jar (3).

6) Use a spatula only when the blender is switched off and the plug (7) is unplugged from the socket.

7) Stop the blender after a few seconds to check the consistency of the food that is being blended.

C. Using the Ice Function (ICE)

1) Adhere strictly to all safety, installation and commissioning instructions specified above.

2) Before using the blender, make sure that all parts of the jar and of the lid are perfectly assembled and fixed in place

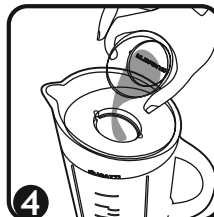
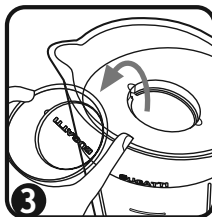
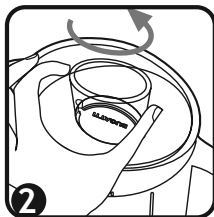
3) This function/program allows to optimize the ice crush performance.

Advice and recommendations on use

- 4) Put into the jar (3) the ice cubes you intend to crush. Do not exceed the 1000ml (30 oz) level indicated on the jar.
- 5) Insert the Plug (7) into the socket and turn the speed selector (12) on the ICE position. The program ICE starts to work automatically with intermittent pulses to crush the ice.
- 6) WARNING: always keep a hand on top of the lid whilst the motor is running.
- 7) To stop the blender turn the speed selector (12) to the zero (0) position. We suggest to stop the blender after a few seconds to check the consistency of the ice-crush
- 8) We suggest to add 100-150 ml of liquid together with the ice. In this way the result of the ice-crush is optimal.
- 9) The ice function program has an automatic power off. After 30 intermittent pulses (on/off) the blender stops automatically. To restart the function again turn the speed selector (12) on zero (0). In this way the blender can be used again on all its functions.
- 10) Use a spatula only when the blender is switched off and the plug (7) is unplugged from the socket (have a look at point D. of the advice and recommendations on use)

D. Using the measuring filler cup (1)

- 1) Remove the measuring filler cup (1) from the lid (2) to add the ingredients through the central hole in the lid (2) only if the blender is switched off or running at low speed =1.



- 2) When using medium =2 or high =3 speed with a full jar (1.5 litres) or hot food/liquids, always switch off the blender before adding the ingredients.
- 3) The spatula could be used to push down the ingredients. Remove the measuring filler cup (1) and introduce the spatula through the lid central hole (2), correctly positioned into the Jar (3) as per below image. This operation should be done with switch off. Spatula (8) should be used only with the correctly positioned lid into the Jar (3). In case of use without lid, make sure the blender is switched off and the plug is removed from the wall socket. Never remove the plug from the socket by pulling on the cable.

Cleaning and maintenance

ALWAYS UNPLUG THE BLENDER WHEN IT IS NOT IN USE AND BEFORE CLEANING. DO NOT UNPLUG THE BLENDER BY PULLING ON THE CABLE.

DO NOT IMMERSE CABLES, PLUGS OR THE BLENDER IN WATER OR OTHER LIQUIDS, EITHER PARTIALLY OR TOTALLY.

- 1) The blender must be unplugged from the socket before it is cleaned. Do not pull on the cable to unplug.
- 2) You are advised to clean the blender immediately after use.
- 3) Never leave the motor base (6) or the cable with plug (7) wet.
- 4) Clean the motor base (6) with a damp cloth and then dry. Do not use abrasive detergents.
- 5) Do not touch the blades. To clean, place them under running water and wipe with a brush. Leave them to air dry. Keep children away from the blades: they can cause serious injury.
- 6) Before using the blender again, check that all its parts are correctly assembled and perfectly dry, especially the motor base (6).
- 7) Only the jar, without the blade unit (5), can be washed in the dishwasher.
- 8) For a quick wash, pour a glass of hot water and add a drop of detergent into the jar. Place the lid (2) and the measuring filler cup (1) into the jar and use the selector (12) to run the blender for at least 30 seconds. Drain the water from the jar and rinse it thoroughly before using it again.

Troubleshooting.

If the Vela blender develops faults or defects or if irregularities are suspected, unplug it immediately.

If you cannot eliminate the fault by following the instructions in this manual, contact Customer Care at CASA BUGATTI. Repairs carried out incorrectly can expose the user to serious harm. No liability is accepted for damage or injury caused by repairs carried out incorrectly and in such cases warranty rights are voided.

Trouble

Vela Blender stop functioning

Possible Cause

Should the unit be overheated (e.g.: over heavy loading for long time)

Solution

Vela Blender is well equipped with an over-temperature automatic protection. This system will give much longer life to the motor of your blender. Please unplug the unit and let it cold down for around 30-40 minutes. After cooling down the blender will be able to operate again normally.

Warranty

- 1) A warranty is deemed to be the replacement or repair free of charge of the parts making up the blender that were faulty at the time of purchase due to manufacturing faults.
- 2) In the case of irreparable or repeated faults which are due to manufacturing faults as above, at the manufacturer's sole discretion, the machine will be replaced.
- 3) The warranty does not cover damage due to:
 - a) improper or faulty use
 - b) defect caused by accidental breakages or carelessness.
 - c) failure to follow instructions and warnings, incorrect installation and maintenance
 - d) running any blender function whilst the blender empty (with the jar empty)
 - e) maintenance and/or modifications performed by unauthorised personnel
 - f) use of non-original spare parts
 - g) carriage
 - h) any other circumstance that cannot be ascribed to manufacturing faults. Any other claims apart from statutory rights are excluded.
- 4) The warranty does not cover damage due to improper use and in particular due to **non-domestic** use.
- 5) The manufacturer accepts no liability for any direct or indirect harm or injury to persons, things and domestic animals that may arise from failure to abide by all the safety instructions contained in this manual, especially failure to abide by the instructions on installation, use and maintenance of the blender.
- 6) Replacement or repair shall not extend the warranty period. The warranty does not cover the replacement of consumables such as blades, seals, etc.
- 7) The warranty runs from the date of the receipt of evidence of purchase and from receipt of the warranty card by CASA BUGATTI. Visit Bugatti website to find the warranty product registration: www.casabugatti.com

SERVICE CENTRE

In the event of a blender fault, contact an authorised BUGATTI dealer, who will return the blender to the manufacturer.

The purchaser is responsible for all carriage and/or dispatch costs for all repairs, regardless of whether or not they are covered by warranty.

If possible, keep the blender's original packing for dispatch.



DISPOSAL OF THE PRODUCT IN CONFORMITY TO EUROPEAN DIRECTIVE 2002/96/EC.

At the end of its working life the product must not be disposed of alongside urban waste. It can be delivered to local-authority separated waste collection centres or to dealers who provide this service. Separated disposal of a household appliance enables possible negative consequences for the environment and health arising from improper disposal to be eliminated and enables the materials of which it is made to be recovered in order to make significant power and resource savings. The symbol of a moveable waste bin marked with a cross displayed on the product indicates that as a household appliance it must be disposed of separately.