



**BSP270101**

**BA010301:**

Telescopic racks for combi-steam oven

**BA020361:**

Container st. steel unperf

**BA020370:**

Container st. steel perf

**BA020381:**

Container non-stick unperf

**BA020390:**

Container non-stick perf

**BA046117:**

Glass tray, for 60cm oven

**CLS10040:**

Cleaning cartridge, 4 pcs.

**GN010330:**

GN-adapter

**GN114130:**

GN insert unperf, st. steel, GN1/3, 40mm

**GN114230:**

GN insert unperf, st. steel, GN2/3, 40mm

**GN124130:**

GN insert perf, st. steel, GN1/3, 40mm

**GN124230:**

GN insert perf, st. steel, GN2/3, 40mm

**GN340230:**

Gastronorm roaster GN 2/3

**GF111100:**

Water descaling system

**GF121110:**

Filter cartridge for descaling system

**GZ010011:**

inlet and outlet hose extension

combi-steam oven 200 series

60 x 45 cm, door hinge: right, Gaggenau

Anthracite

**BSP270101**

– Flush installation

– Combination of hot air and steam

– Fixed inlet and outlet water connection

– Automatic self-cleaning programme

– Flush installation

Cleaning system, fully automatic

Hot air 30 °C to 230 °C can be combined with chosen humidity level of 0%, 30%, 60%, 80% or 100%

Sous-vide cooking with accurate temperature regulation

Automatic programs

Fixed inlet and outlet water connection

TFT touch display

Panel-free appliance with surface control module

Electronic temperature control from 30 °C to 230 °C

Net volume 50 litres

#### Heating methods

Hot air + 100 % humidity.

Hot air + 80 % humidity. Hot air + 60 % humidity.

Hot air + 30 % humidity. Hot air + 0 % humidity.

Low temperature cooking. Sous-vide cooking.

Full surface grill level 1 + humidity. Full surface

grill level 2 + humidity. Full surface grill +

circulated air. Dough proofing. Defrosting.

Regenerating.

#### Handling

Rotary knob and TFT touch display operation.

Clear text display.

Option to save individual recipes (incl. core temperature probe).

Personalisation of automatic programs.

Information key with use indicators.

Side-opening door opens up to 110° angle.

#### Features

Full surface grill behind glass ceramic, combinable with circulated air up to 230 °C and steam

Steam removal.

Misting.

Three-point core temperature probe with automatic shut-off and estimation of cooking time.

Hot air fan rotates in both directions for ideal heat distribution

Automatic programs.

Actual temperature display.

External steam generation

Steaming without pressure

Automatic boiling point detection.

LED light on the side.

Large cavity

Hygienic stainless steel cooking interior.

3 tray levels.

Timer functions: cooking time, cooking time end, timer, stopwatch, long-term timer (certified by Star-K).

#### Safety

Child lock.

Safety shut-off.

Cooled housing with temperature protection.

#### Cleaning

Cleaning program, fully automatic.

Descaling program for the steam generator.

Drying function.

Automatic drying of the cavity at the end of the cooking process.

Strainer filter, removable.

Special accessories (order as spare parts):

part no. 17002490 Descaling tablets

#### Planning notes

Door hinge not reversible.

No other electrical appliances should be installed above the BS.

At no point may the outlet hose be positioned higher than the bottom edge of the appliance.

The outlet hose must also be at least 100 mm lower than the appliance outlet (see drawing "drainage connection").

Inlet hose can be extended once.

The outlet hose must not be longer than a maximum of 5 m.

The water connection for the inlet hose must always be accessible and not located directly behind the appliance.

The connection of the outlet hose to the siphon must not be directly behind the appliance and should be accessible.

The descaling system GF 111 100 (3) must be installed when connecting the appliance if the water hardness exceeds 7° dH.

The door panel surface of the appliance extends 21 mm from the furniture cavity.

The outer edge of the door handle extends 72 mm from the furniture cavity.

Necessary lateral gap between appliance door and furniture panel of min. 5 mm.

Consider the overhang, incl. the door handle, when planning to open drawers next to the appliance.

When planning a corner solution, pay attention to the 110° door opening angle. Min. 300mm distance to the adjacent wall is required.

The mains socket needs to be planned outside the built-in niche.

#### Connection

Total connected load 3.1 KW.

Only cold water connection.

Inlet hose 3.0 m with connection pipe thread ISO228-G 3/4" (Ø 26.4 mm), extendable.

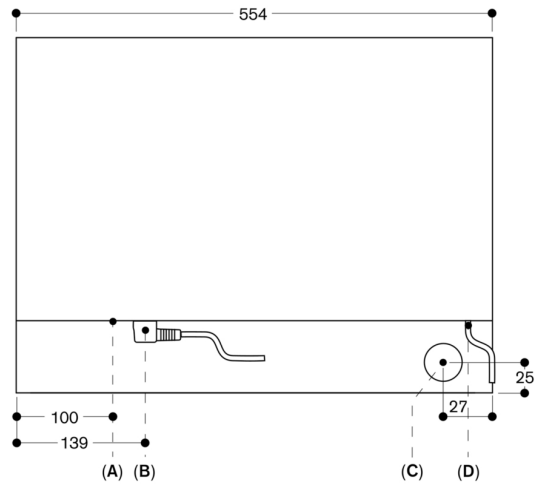
Connecting cable 1.8 m without plug.

Outlet hose (Ø 25 mm) 3.0 m (HT-Hose).

Plan a LAN cable.

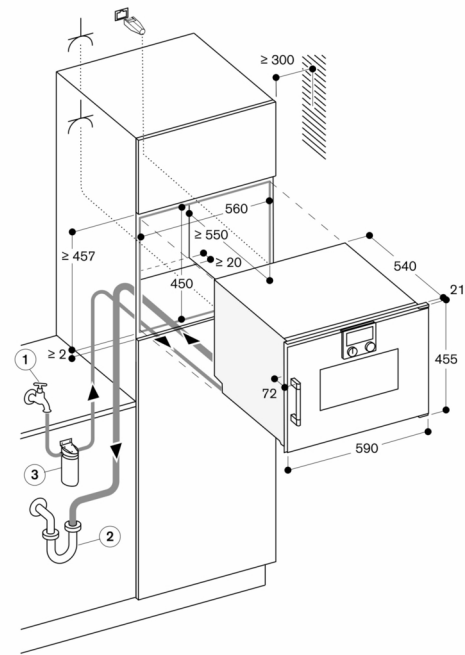
Please check the user manual for how to switch off the WiFi module.

View from rear



- A: LAN connection  
B: Electric terminal box  
C: Water outlet  
D: Cold water inlet

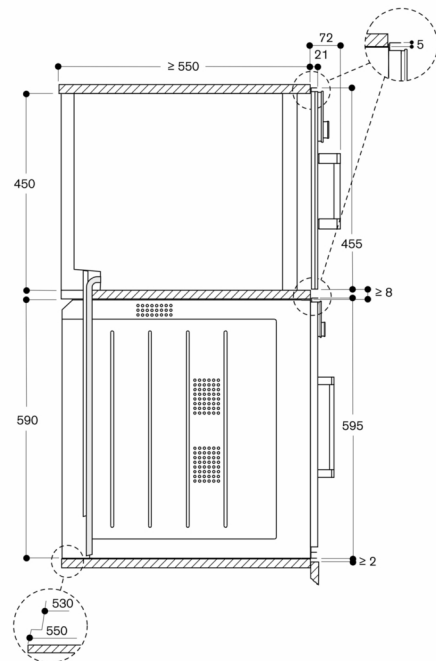
measurements in mm



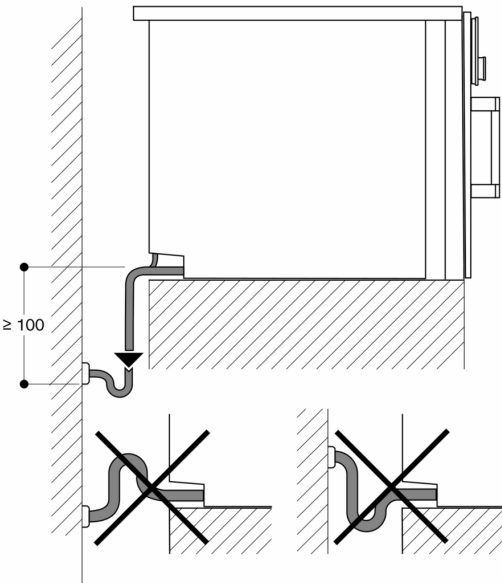
Socket

measurements in mm

Side view of BSP 260/270 above BOP



measurements in mm



measurements in mm