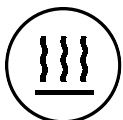


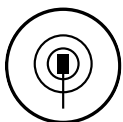


Thermotouch 7.6iG thermostat features a sleek white glass display and an improved 7 day 6 event heating schedule

Easily program 6 heating events (3 on and 3 off) for every day of the week to create an efficient, automatic schedule for your electric underfloor heating system.



Designed to control your electric underfloor heating system easily and automatically



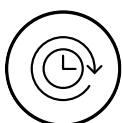
Built in ambient temperature sensor and external floor sensor for accurate temperature management



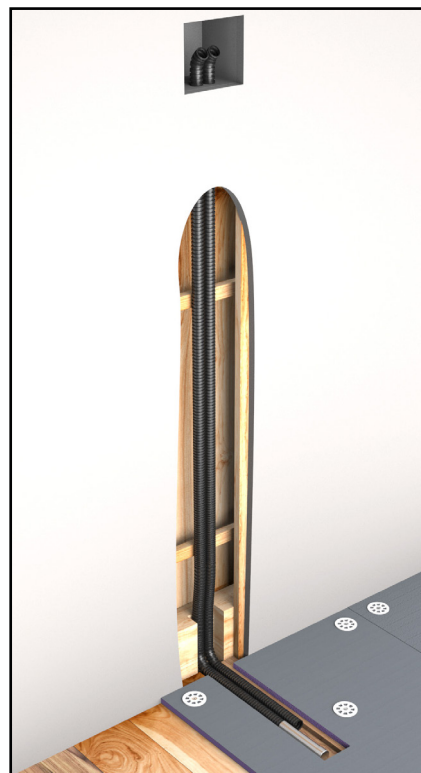
Lock the screen to prevent tampering by holding the up and down arrows for 5 seconds



Design an economical heating schedule for your underfloor heating system that fits your lifestyle



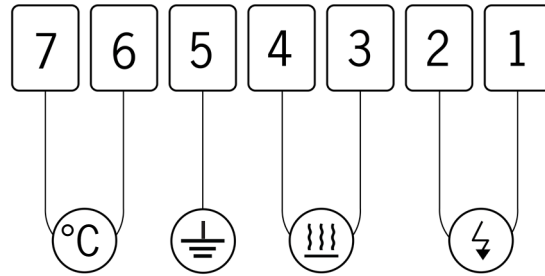
Adjust the temperature manually to boost your underfloor heating until the next scheduled heating event



Floor temperature sensor should be installed in a conduit, within a clear area of the floor, and away from any other temperature influences.

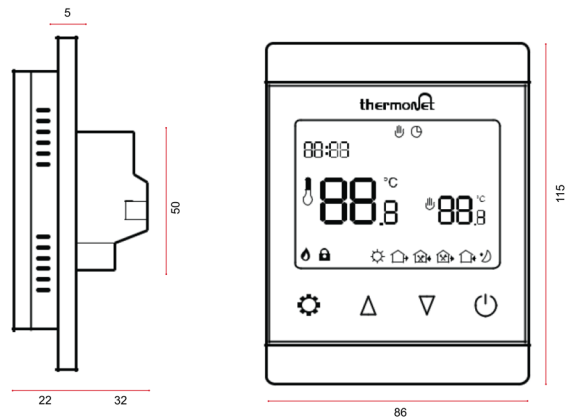
Wiring diagram

- ❶ 220-240V AC Supply Live
- ❷ 220-240V AC Supply Neutral
- ❸ Underfloor Heating Neutral
- ❹ Underfloor Heating Live
- ❺ Earth
- ❻ Floor sensor (not polarity sensitive)
- ❼ Floor sensor (not polarity sensitive)



Box contents

- 1 x Thermotouch 7.6iG
- 1 x Installation guide
- 1 x 3m floor temperature sensor probe
- 1 x 2m sensor conduit
- 2 x Fixing screws
- 1 x Portrait mounting plate



Technical data

Supply voltage	220 - 240V 50/60Hz
Maximum load	16A (3600W)
Backup storage	EEPROM (approx. 1 year backup)
Temperature range	5 ~ 80°C (0.5°C increments)
Accuracy	±0.5°C
Sensor rating	NTC 10kΩ @ 25°C
Consumption	2W
Warranty	3 years
IP rating	IP30
Width	86mm
Height	115mm
Depth	54mm (32mm in wall)