

## WALL HUNG TOILET



## Features

- Wall Hung Type, easy cleaning
- TORNADO FLUSH for powerful flushing effect with less amount of water
- CEFIONTECT prevent debris on toilet surface
- RIMLESS DESIGN bowl ensures easy cleaning and ultimate hygiene
- WATER SAVING

## Specifications

Flush system:	TORNADO FLUSH
Water Use:	4.5L / 3L
Rough-in:	H=220 mm (P-Trap)
Bowl Shape:	D-Shape
Water Pressure:	0.05MPa~0.75MPa
Size:	394W x 530D x 339H mm

## Parts description

Fittings and Seat & Cover are not included

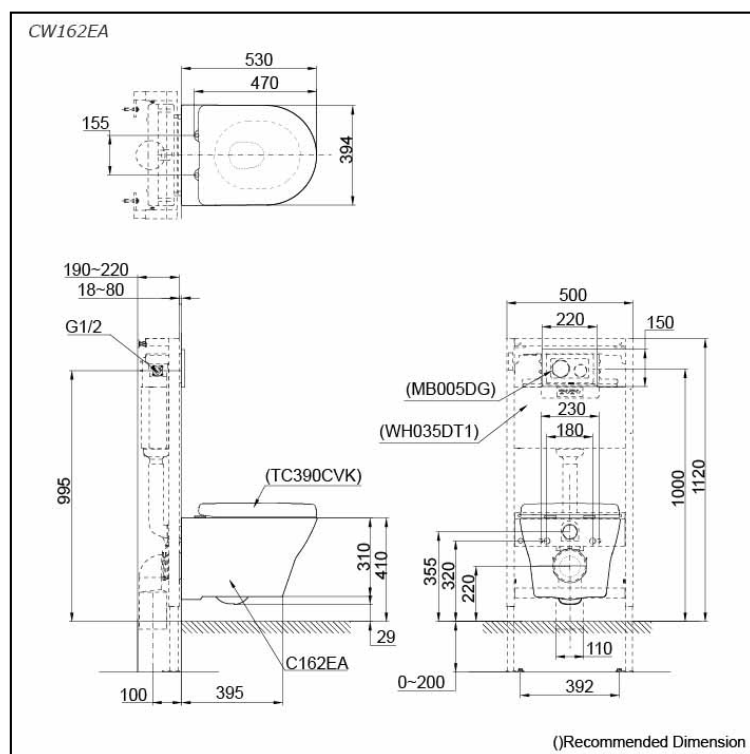
- **CW162EA**  
D-Shape Wall Hung Toilet

### Optional Parts

- TC390CVK  
Soft Close Seat & Cover (Urea Resin)
- WH035DT1  
Concealed Cistern w/ Frame
- WH037DT1  
Concealed Cistern w/ Frame (Low Type)
- MB005DG  
Flush Panel

## Colors

White (CEFIONTECT)



## WASHLET S5



## Features

- EWATER+ spreads out and keeps the nozzle clean by preventing bacteria with sanitizing effect
- PREMIST water is sprayed inside the toilet bowl to make it difficult for dirt to adhere
- Maximized comfort function with pulsating cleansing
- Fully equipped with comfortable rear, front and oscillating cleansing functions
- HEATED SEAT with temperature control
- Auto powerful DEODORIZER activates after every usage

EWATER+ is made from tap water by electrolyzed chloride ion without any chemicals. After use, it returns to normal water in the state of safe and environmental friendly

## Specifications

Bowl Shape:	D-Shape
Water Pressure:	0.07Mpa~0.75Mpa
Power Rating:	220~240V , 50/60Hz, 843~853W
Length of Power Cord:	1.2 m
Material:	Plastic
Size:	383W x 540D x 130H mm

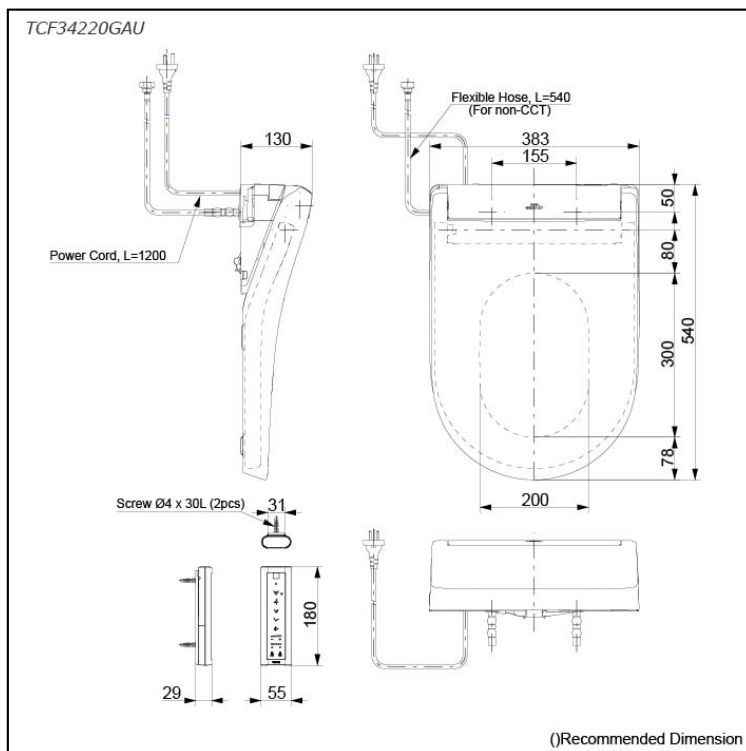
## Parts description

- TCF34220GAU  
WASHLET  
D-Shape

## Colors

White #NW1

## Certifications



( )Recommended Dimension