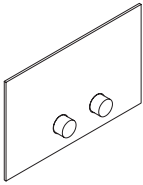
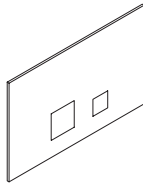




Istruzioni / Instructions / Instructions De Montage / Bedienungsanleitung / Instrucciones

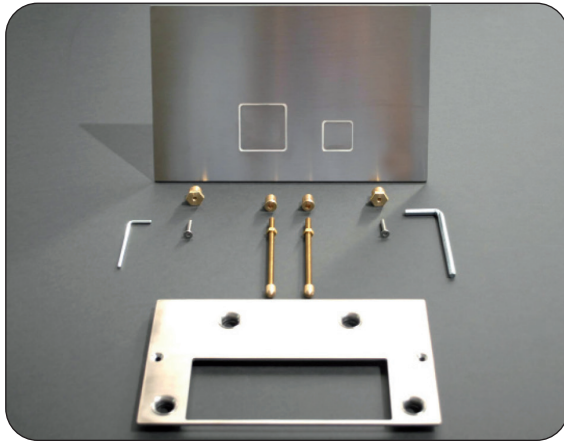


ART. 8402



ART. 8403

**Contenuto della confezione** / Package Contents / Contenu de l'emballage / Packungsinhalt / Contenido del paquete



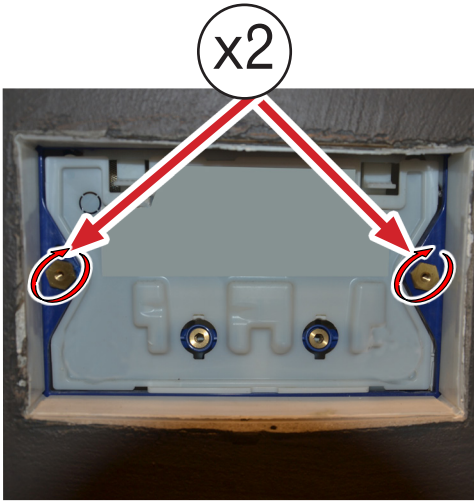
Placca di comando per cassette di scarico compatibile con GEBERIT, SIGMA 8, SIGMA12  
- Senza fissaggi a vista

WC flush plate compatible with GEBERIT, SIGMA 8, SIGMA12  
- Without visible fastening elements

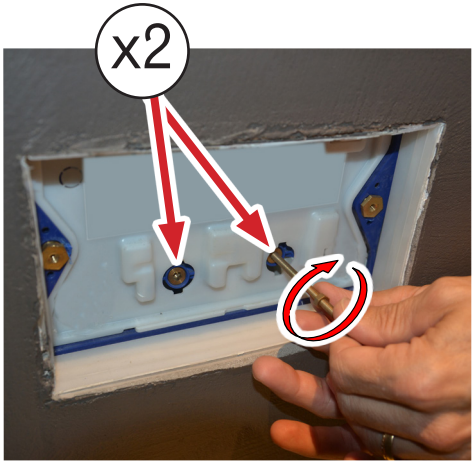
Plaque de commande pour boîtier d'écoulement compatible avec GEBERIT, SIGMA 8, SIGMA12  
- Sans fixations visibles

Betätigungsfeld für die Wasserspülung Kompatibel mit GEBERIT, SIGMA 8, SIGMA12  
- Ohne Befestigungselemente einsehbar

Placa de control para el lavado de cisternas compatibles con GEBERIT, SIGMA 8, SIGMA12  
- No fijación visible



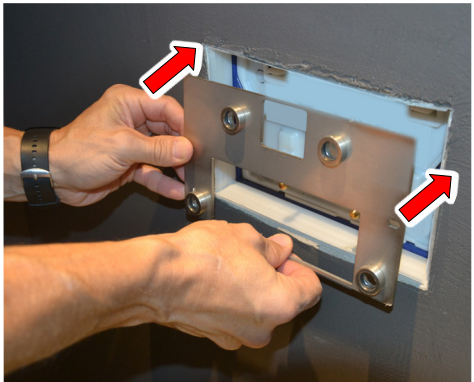
1.



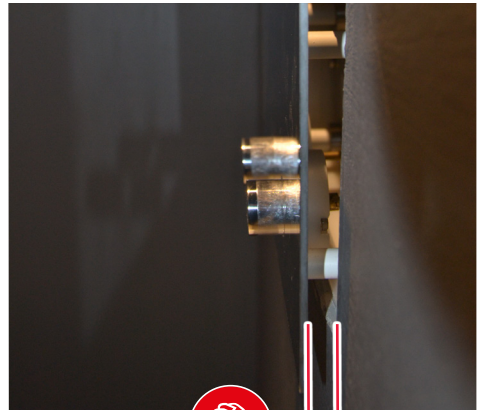
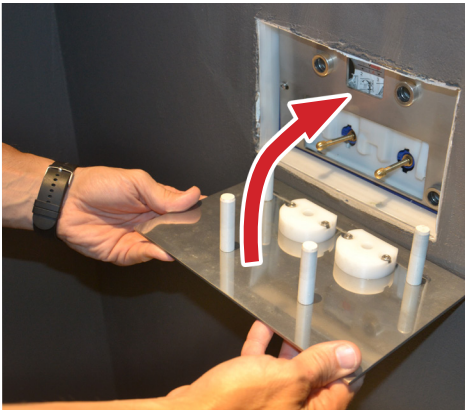
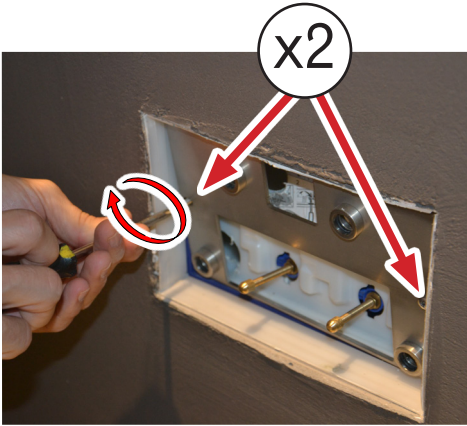
2.

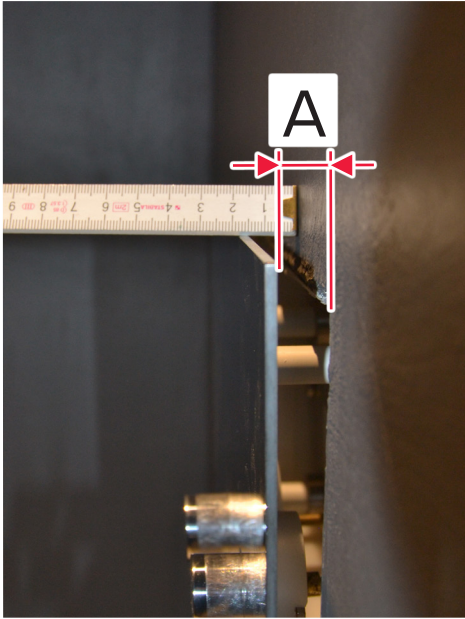


3.

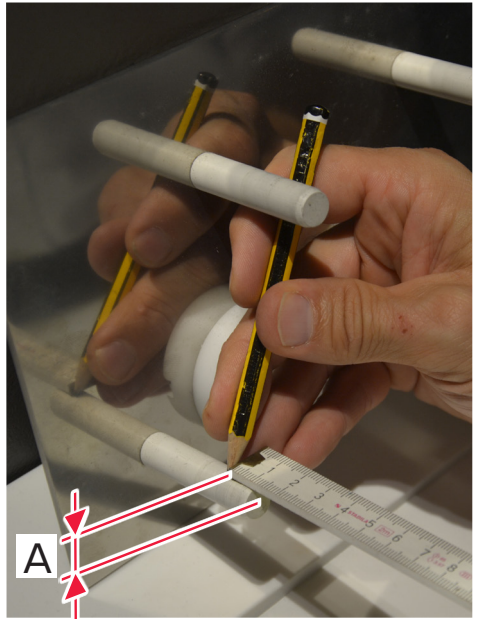


4.

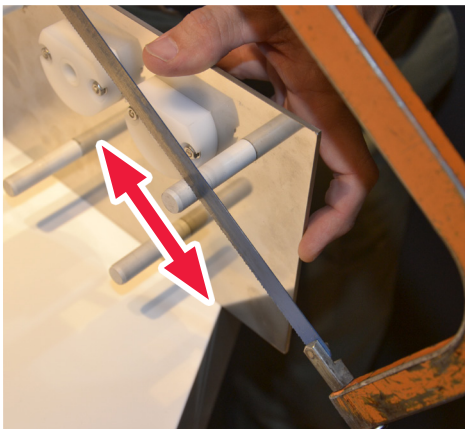




9.



10.



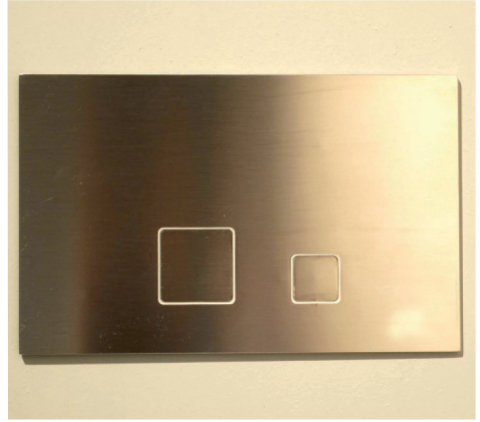
11.



12.



13.



14.

Note / Notes / Notes / Notizen / Notas

.....

.....

.....

.....

.....

.....

.....

.....

.....

.....

.....

.....

.....

.....

.....

.....

.....

.....

.....

.....

.....

.....

.....

.....

.....



**Fratelli Fantini SpA**

via Buonarroti, 4  
Pella (NO) Italia  
T +39 0322 918411 r.a.  
F +39 0322 969530  
fantini@fantini.it  
www.fantini.it



1191000060000000 Rev. 2