

AFTER SALES TEAM

If you have any concerns with installing your products, please call or email our Concierge team:
P 1300 050 050
E service@winningappliances.com.au

SPECIFICATIONS

General note: It is a requirement of State Plumbing Codes that licensed plumbers carry out all tapware installations. All installations should comply with the relevant requirements of AS/NZS 3500 and local plumbing codes.

PRESSURE

- Maximum Hydrostatic Pressure - 1000kpa. This pressure may be exceeded only under test conditions as per AS/NZS 3500. Where hydrostatic pressure exceeds the maximum stated above, pressure-limiting valves should be installed.
- Recommended Maximum Hydrostatic Pressure - 500kpa (AS/NZS 3500)
- Recommended Minimum Hydrostatic Pressure - 150kpa

TEMPERATURE

- Maximum Water Temperature - 70° C

NOTE: For optimum performance, hot and cold inlet water pressure should be equal.

CARE + MAINTENANCE

- Product should be inspected for surface damage prior to installation.
- Never use acetone silicones in conjunction with tapware products.
- Clean products with warm soapy water and a soft cloth. Do not use harsh abrasive cleaning compounds.

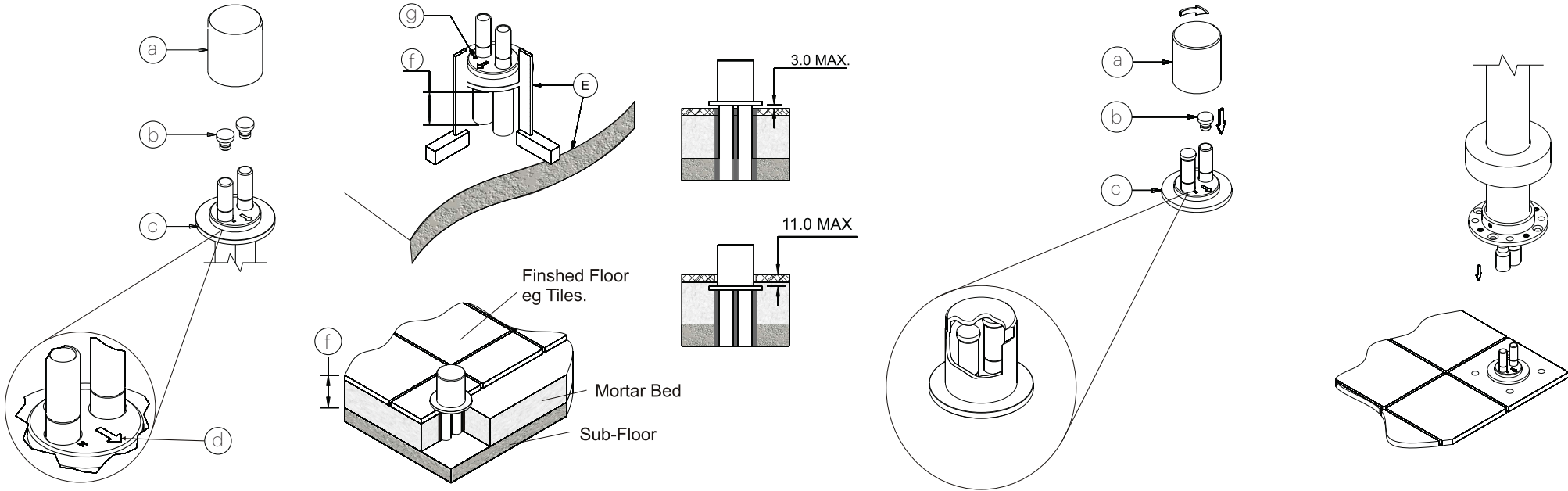
TONIC

Bath filler installation instructions

TONIC

Bath filler rough-in.

It is recommended a licensed plumber carry out all tapware installations.
All installations should comply with the relevant requirements of AS/NZS 3500.



PRE-INSTALLATION

Remove the rough-in assembly from the packaging. Unscrew the protective cover (a) and test plugs (b) from the rough-in base (c).

Note: cover and plugs are removed to prevent damage from heat applied when connecting the pipes.

LOCATION

Position the rough-in base in the desired location ensuring the arrow (d) faces the direction the handle will face in the mixed position midway between hot and cold.

ROUGH-IN

Ensure squareness of rough-in base to sub-floor (e) and correct height is achieved (f). The height is calculated by adding the combined thickness of tiles, mortar etc.

Ensure the tolerance set out in the diagram above is achieved.

CONNECT SUPPLY

Connect the supply lines making sure the hot water supply is connected to the hot inlet pipe (g).

TEST

Reinsert the test plugs (a) and screw on the plastic cover (b).

Turn the water supply on and check for leaks. If leakage occurs, isolate water, remove cover and plugs, repair leak and repeat the process as required.

Note:

Final installation of the mixer is only done after completion of the finished floor.

NOTES

Pressure
Maximum Hydrostatic Pressure - 1000kpa

This pressure may be exceeded only under test conditions as per AS/NZS 3500. Where hydrostatic pressure exceeds the maximum stated above, pressure-limiting valves should be installed.

Recommended Maximum Hydrostatic Pressure - 500 kpa
(AS/NZS 3500)

Recommended Minimum Hydrostatic Pressure - 150kpa.

Temperature
Maximum Water Temperature - 70°C
Note: For optimum performance, hot and cold inlet water pressure should be equal.

Ceramic Cartridges
Warranty claims will not be honoured where the ceramic cartridge has malfunctioned due to the presence in the water supply of;
- copper tube pieces
- sand, dirt or stones
- thread tape
- other objects not normally present in potable water supplies

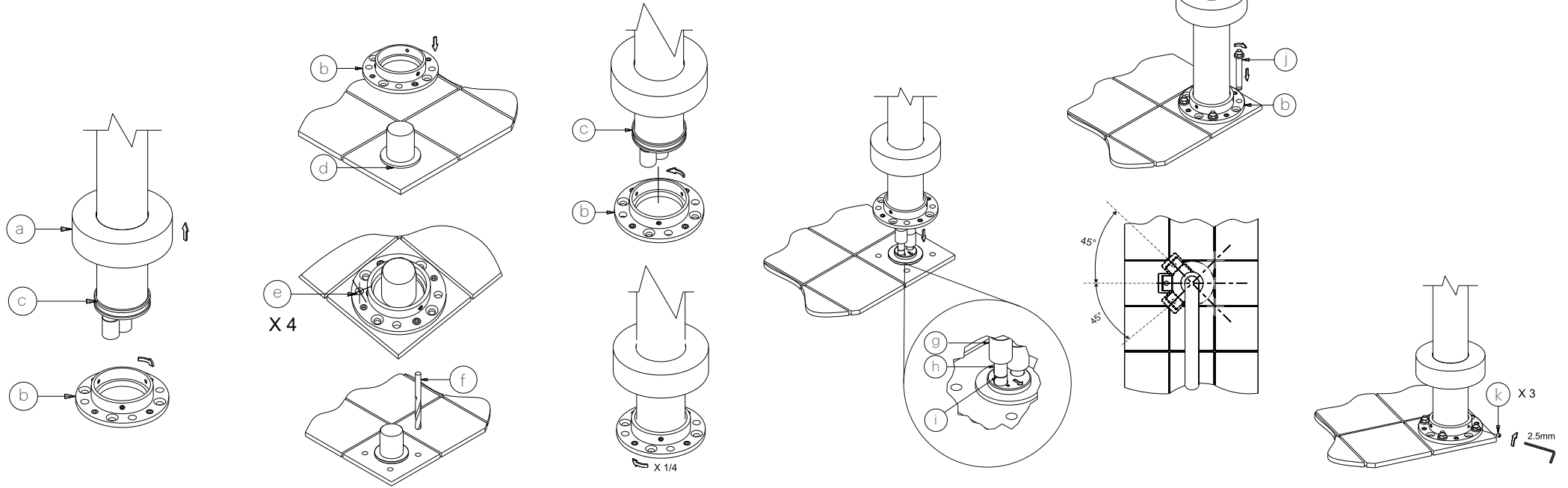
Note: Flow restrictors may be fitted in place of the standard aerator, however this tap should not be attached via the end of the spout to any additional water control device eg. dishwasher, water filter with shut-off device.

Installation of aerators
Upon re-installation of the aerator after flushing, the aerator casing should be tightened to prevent removal by hand.

TONIC

Bath filler installation instructions

It is recommended a licensed plumber carry out all tapware installations.
All installations should comply with the relevant requirements of AS/NZS 3500.



PRE-INSTALLATION

Remove the mixer from packaging. Carefully slide the cover plate (a) up and unscrew the brass fixing base (b) from the threaded section on the column (c).

MARK-OUT & DRILL

Position the brass fixing base (b) centrally over the rough-in base (d).

Mark (e) and drill (f) the fixing holes to hardware manufacturers specifications, being sure to avoid underfloor pipework.

Note: fixings supplied are only suitable for tiled/concrete floor.

IMPORTANT

Screw the brass fixing base (b) all the way onto the threaded section on the column (c), then back it off one quarter of a turn.

This will allow some location adjustment later in the installation.

CONNECT

Isolate the water supply again if not already done so and remove the test cover and plugs from the rough-in base.

Have a helper hold the mixer while you connect the push on hoses (g) to the appropriate hot/cold spigots (h) all the way to the indication line (i).

MOUNT

Mount the mixer to the floor via the brass fixing ring (b) using suitable hardware (j).

Once firmly secured to the floor, there should be approx. 45 degrees of freedom in each direction to adjust the mixer to the desired orientation.

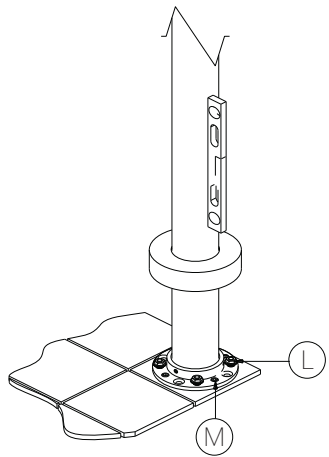
SECURE

Tighten the three locking screws (k) to secure the mixer in the desired orientation.

TONIC

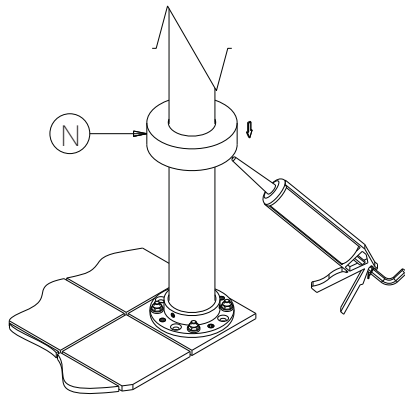
Bath filler installation instructions (continued)

It is recommended a licensed plumber carry out all tapware installations.
All installations should comply with the relevant requirements of AS/NZS 3500.



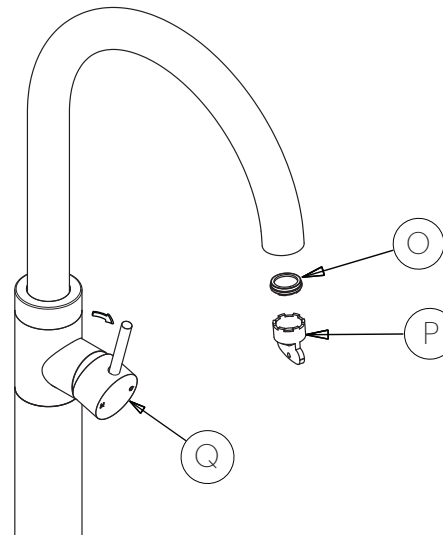
LEVEL

If the floor is not level or the mixer is on a lean, slightly loosen the fixing bolts (L) and adjust accordingly using the levelling set screws (M), then re-tighten the fixing bolts.



COVER PLATE

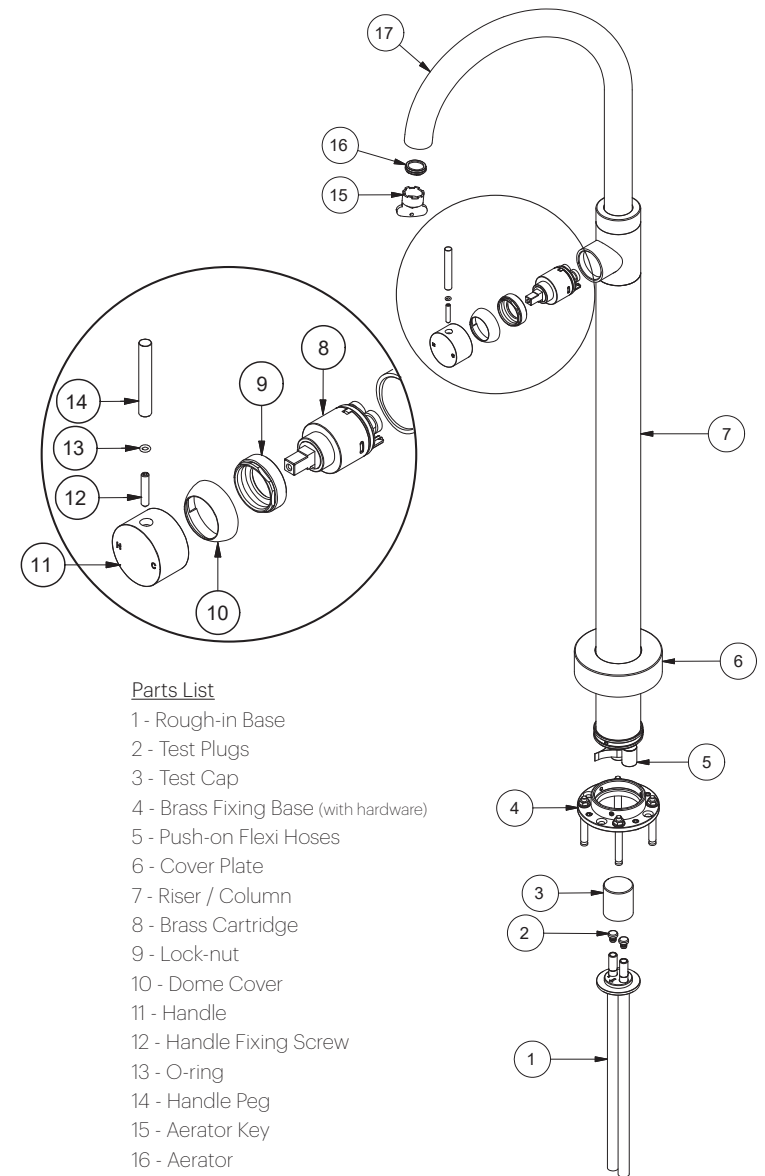
Apply a small bead of non acetone, neutral cure silicone to the underside of the cover plate (N) and carefully slide it down until it meets the floor and creates a seal.



FLUSH

Prior to re-introducing the water supply, remove the aerator insert (O) using the key supplied (P) and open handle (Q) in the mixed position, midway between hot and cold.

Introduce mains supply to flush the supply lines, then reinstall the aerator.



Parts List

- 1 - Rough-in Base
- 2 - Test Plugs
- 3 - Test Cap
- 4 - Brass Fixing Base (with hardware)
- 5 - Push-on Flexi Hoses
- 6 - Cover Plate
- 7 - Riser / Column
- 8 - Brass Cartridge
- 9 - Lock-nut
- 10 - Dome Cover
- 11 - Handle
- 12 - Handle Fixing Screw
- 13 - O-ring
- 14 - Handle Peg
- 15 - Aerator Key
- 16 - Aerator
- 17 - Swivel Spout