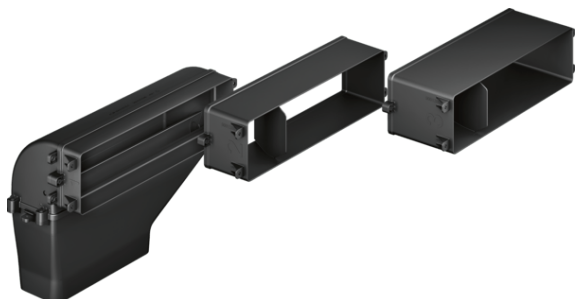


installation accessory  
Z8100X1



COOKING PASSION SINCE 1877



#### Features

##### Technical Data

Dimensions of the packed product (HxWxD) (mm) : 160 x 590 x 765

Pallet dimensions : 175.0 x 80.0 x 120.0

Standard number of units per pallet : 20

Net weight (kg) : 1.010

Gross weight (kg) : 3.7

EAN code : 4242004232612



installation accessory  
Z8100X1

Features

- Direct air outlet onto 220x90mm flat duct system or with 90° diverter element and outlet for continuation of ducting with 220x90mm flat duct. system.
- Includes: 3 mountable depth adapters (40mm, 80mm, 120mm) for different worktop depths from 600mm to 750mm, 90° diverter element, connector element for continuation with 220x90mm flat ducting.