

DREAME



AirStyle Pro

Air-powered glam in a snap



Dreame AirStyle Pro

7-in-1 Hair Drying & Styling Tool Kit

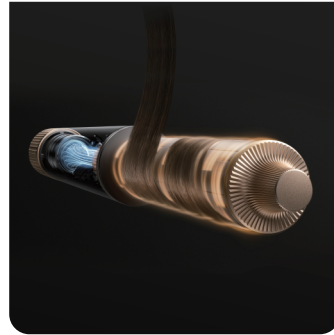
AirStyle Pro empowers users to achieve salon-inspired results at home with precision and control. Utilizing high-speed jet airflow, it efficiently dries and styles hair without overheating, preserving hair integrity and reducing frizz. You can mix and match a variety of attachments to create multiple straight and curled hairstyles, while the instant cool air function quickly sets curls for long-lasting* results.

Key Features



Custom Combos for Versatile Looks

AirStyle Pro features 7 interchangeable attachments, providing customizable options for a variety of hairstyles. Whether curling, smoothing, or adding volume, it offers the flexibility to achieve diverse looks tailored to your preferences.



Powerful Airflow to Create Quick Styles

The combination of high-speed airflow and high-density air outlets delivers consistent, powerful airflow that gently embraces each strand, shaping your hair while reducing frizz for sleek, polished styles that last.



NTC Heat Monitor Enhances Consistent Protection

Advanced temperature monitoring system, which operates at 300 times per second*, effectively prevents overheating. With 3 customizable temperature settings*, you can optimize both styling and drying to meet your specific needs.



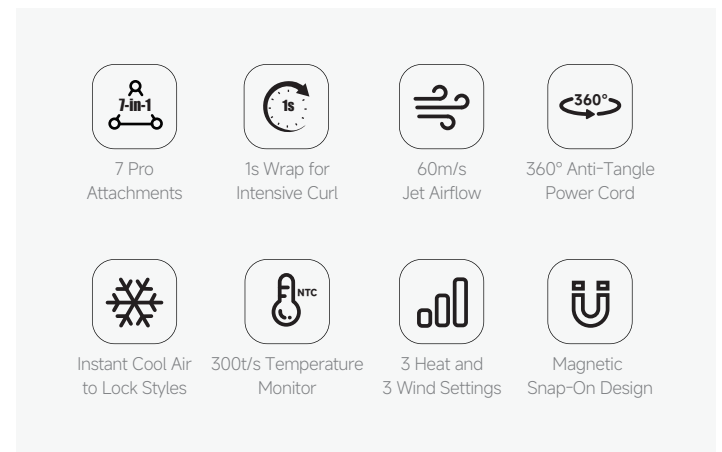
Effortless Styling with Intuitive Design

The snap-on magnetic design allows quick attachment changes and a one-press cold shot to set and lock in curls. The 360° anti-tangle cord ensures smooth styling without interruption.

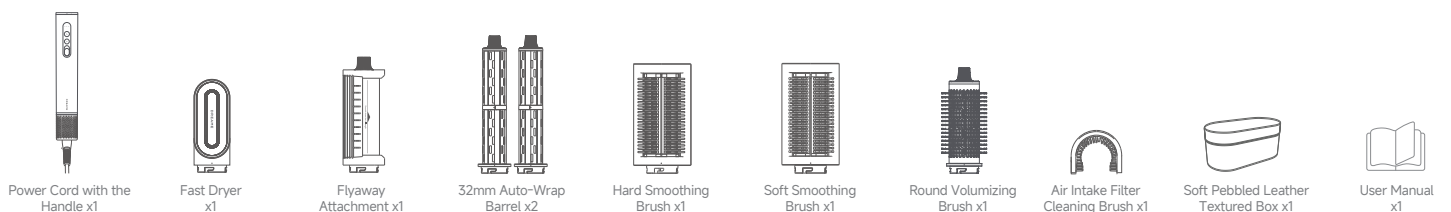
Specifications

Rated Power	1,300W
3 Temperature Setting	Room Temperature (Cool), 50°C (Warm), 80°C (Hot)
3 Wind Speed Setting	50m/s, 55m/s, 60m/s
Highest Wind Volume	55m ³ /h
Power Cord Length	2.8m
Handle Weight	290.6g (Without the Power Cord)
Handle Size	44.6mm x 44.6mm x 260mm
Noise Level	76dBA
NTC	300 times/s
Motor	110,000RPM

Features



What's in the Box



*Long-lasting: refers to curls maintaining less than 35% deformation after 3 hours without styling spray in our in-house lab test. For improved hold, the application of styling products is recommended.

*300 times per second, 60m/s: Data from our in-house lab.

*3 customizable temperature settings: Tested with Fast Dryer, positioned near the airflow outlet under controlled conditions for optimal performance.

*1s: Based on our in-house data, indicates that a duration of one second is required for 1,000 strands of hair to wrap around the barrel under maximum airflow.

*The illustrations in this manual are for reference only. Please refer to the actual product.

*Styling results may vary based on individual hair type, length, and other contributing factors.