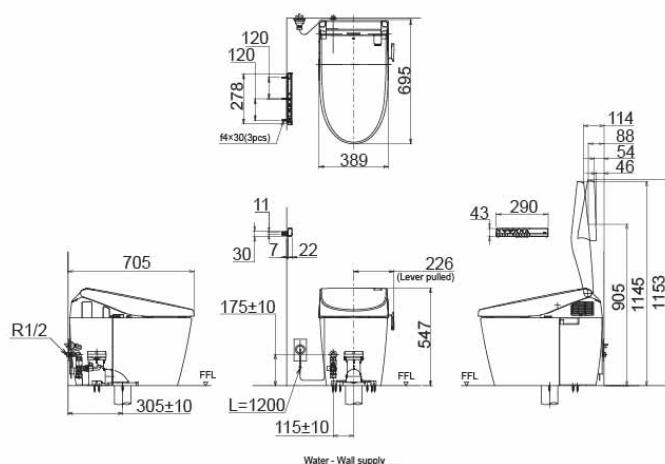


NEOREST AH Luxurious Integrated Toilet



CS985VC /
TCF9786WAT



()Recommended Dimension

Features

- Hybrid Ecology System
 - WATER SAVING dual flush 4.5 / 3L
 - minimum required water pressure only at 0.07MPa (Dynamic)
- TORNADO FLUSH for powerful flushing effect with less amount of water
- EWATER+ keeps toilet bowl and nozzle clean by prebenting bacteria with sanitizing effect
- CEFIONTECT prevent debris on toilet surface
- Fully equipped with comfortable rear, front and oscillating cleansing functions
- Auto lid opening and closing function
- Auto Soft light function usable for night time usage

EWATER+, highly effective sanitizer created by electrolyzed chloride ion in tap water. After use, it returns back to original state, environmental friendly

Specifications

Flush system:	TORNADO FLUSH
Water Use:	4.5L / 3L
Rough-in:	305 mm (S-Trap)
Bowl Shape:	Elongated
Water Pressure:	0.07MPa~0.75MPa
Power Rating:	220~240V, 50/60Hz, 830~839W
Length of Power Cord:	1.2 m
Material:	Bowl - Vitreous China Seat & Cover -Plastic Remote Controller -Aluminium

Parts description

- CS985VC**
Elongated Closet Bowl
- TCF9786WAT**
WASHLET unit

Colors

White (CEFIONTECT)