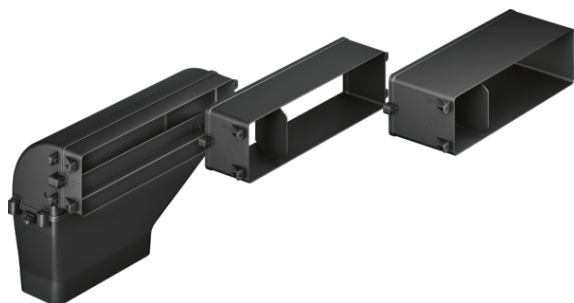


Optional accessories

HEZ381401 Extraction module Accessory for ducted extraction HEZ381401



Technical Data

Dimensions of the packed product (HxWxD) (mm) :

160 x 590 x 765

Pallet dimensions :

175 x 80 x 120

Standard number of units per pallet :

20

Net weight (kg) :

1.110

Gross weight (kg) :

3.8

EAN code :

4242005088416



4 242005 088416

Optional accessories

HEZ381401 Extraction module Accessory for ducted extraction

HEZ381401

- Direct air outlet onto 220x90mm flat duct system or with 90° diverter element and outlet for continuation of ducting with 220x90mm flat duct. system.
- Includes:
3 mountable depth adapters (40mm, 800mm, 120mm) for different worktop depths from 600mm to 750mm, 90° diverter element, connector element for continuation with 220x90mm flat ducting.