

ICBOG36

FEATURES

- Rigorously tested for decades of use
- Exceptional support from our Customer Care team
- Three individually contained grill burners for versatile cooking
- Utilizes both direct and radiant heat for more thorough grilling
- Halogen lights for night-time grilling
- Double-wall hood front holds in heat
- Hood assist system makes opening and closing easy
- Three-position warming rack for the exact temperature you want
- Stainless steel burner grates
- Heavy-duty stainless steel construction
- Infrared sear zone seals in juices and flavors
- Two-position rotisserie handles foods big and small
- Available built-in

ACCESSORIES

- Canvas covers
- Griddle Plate
- Black control knob(s)



KNOB OPTIONS



GRILL SPECIFICATIONS

- 2 - 29 MJ Burners
- 1 - 15 MJ Rotisserie Burner
- 1 - 29 MJ Sear Burner

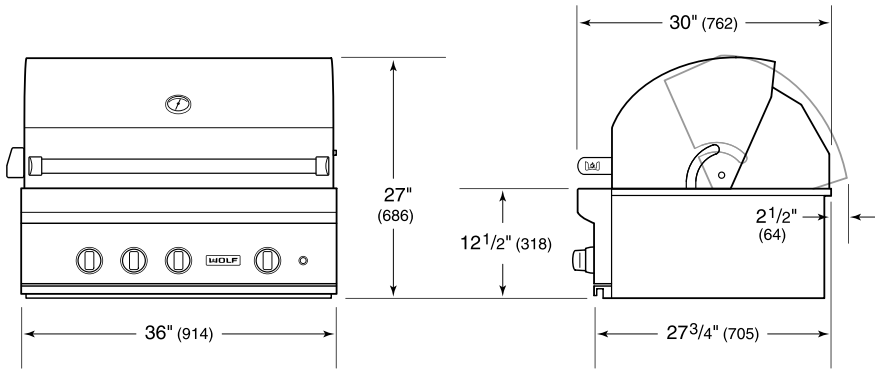


PRODUCT SPECIFICATIONS

Model	ICBOG36
Dimensions	914mmW x 686mmH x 762mmD
Weight	112 kg
Electrical Supply	220-240 VAC; 50/60 Hz
Electrical Service	10 amp dedicated circuit
Gas Supply	19 mm minimum
Gas Inlet	13 mm

**NOTE:** Dimensions in parenthesis are in millimeters unless otherwise specified

DIMENSIONS



GUIDE  
ONLY.

**THESE SPECIFICATIONS ARE A GUIDE ONLY.** Not suitable for cabinetry, installation or services location.  
SUB-ZERO AND WOLF OFFER A CUSTOMISED DESIGN CHECK SERVICE to ensure your new appliances are installed perfectly. Please contact our Customer Care team for further information regarding our Design Check Service, or for detailed product specification and installation advice.  
Phone: 1300 808 859 Email: [enquiries@subzero.com](mailto:enquiries@subzero.com)  
Sub-Zero and Wolf Design Guides are also available via our website: [www.subzero-wolf.com.au](http://www.subzero-wolf.com.au)