

# Tonic by Rogerseller

Installation  
Instructions

## Hob Mixer with Pull Out Sink Swivel Outlet

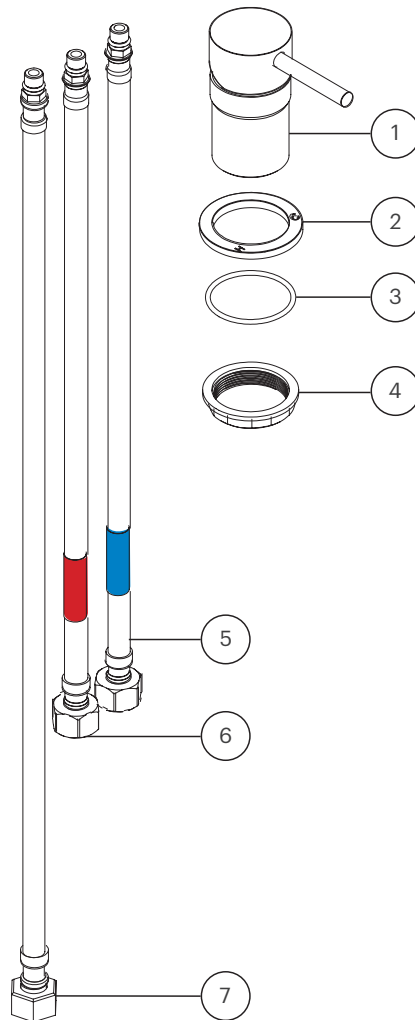
# Specification

## Tonic by Rogerseller Hob Mixer

### Parts List

1. Mixer assembly
2. Base ring
3. O-ring
4. Locking Nut
5. Cold Ramflex Anti Corrosion Connector 360mm
6. Hot Ramflex Anti Corrosion Connector 360mm
7. Outlet Ramflex Anti Corrosion Connector 500mm

Note: If not already done so separate the parts as per the diagram, right.



# Installation

## Step 1

Place the base ring with o-ring onto the mixer assembly.

## Step 2

Connect and tighten by hand the Ramflex flexible connectors to the appropriate inlets in the base of the mixer assembly. Hot is marked with "H", Cold with "C" and Outlet with "O" respectively.

## Step 3

Feed the assembly into the pre-established sink / basin hole one hose at a time. Ensure it sits flush with the counter top and centred in the hole so as the o-ring can achieve a seal.

## Step 4

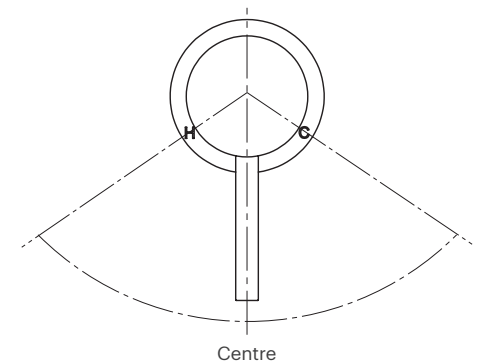
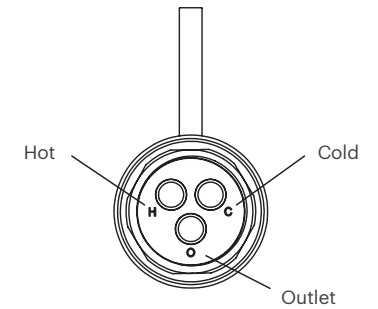
Similarly, from the underside place the locking nut over the flexi hoses one at a time and screw onto the mixer assembly. Before tightening firmly, confirm the location of both the centre of the mixer assembly and the position of the H and C markings on the base plate are positioned.

## Step 5

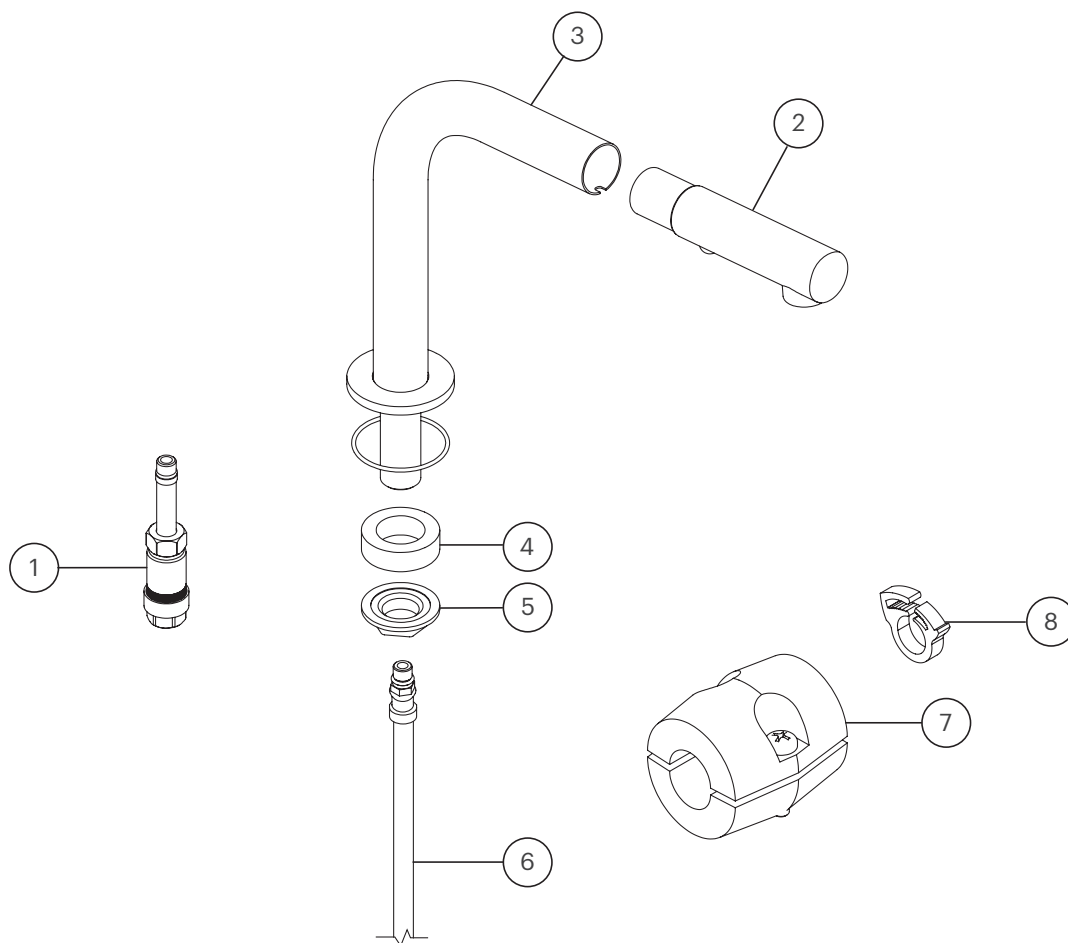
Connect the Ramflex hoses to the appropriate mains supply and outlet lines. Prior to introducing supply, remove the aerator from the outlet, move the handle to the mixed water open position and introduce mains water to flush the supply lines.

## Step 6

Re-insert the aerator to complete the installation.



# Specification



## Tonic by Rogerseller Pull Out Sink Swivel Outlet

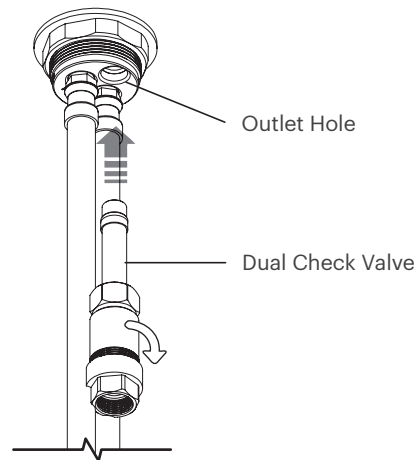
### Parts List

1. Dual Check Valve
2. Spout Hand Piece
3. Spout Assembly with O-ring
4. Spacer
5. Spout Lock-nut
6. Pull-out Hose
7. Counter Weight
8. Hose Clip

# Installation

## Step 1

Screw the dual check valve assembly into the appropriate outlet connection on the chosen remote mixer tap.



## Step 2

From above, remove the spout lock-nut and spacer from the spout assembly then feed the spout assembly with hose through the sink hole.

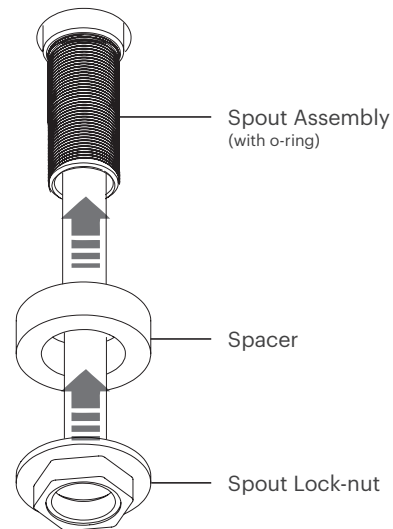
From the underside, fit the spacer and spout lock-nut back over the hose and screw the lock-nut onto the spout assembly. Ensuring the o-ring seals on the sink top.

Secure in place by firmly tightening the lock-nut.

**Bench Hole Requirements**  
Minimum Hole Size - Ø25mm  
Maximum Hole Size - Ø42mm  
Maximum Bench Thickness - 40mm

**Note:** For counter tops with a porous surface a small bead of neutral cure silicone may be required to achieve seal.

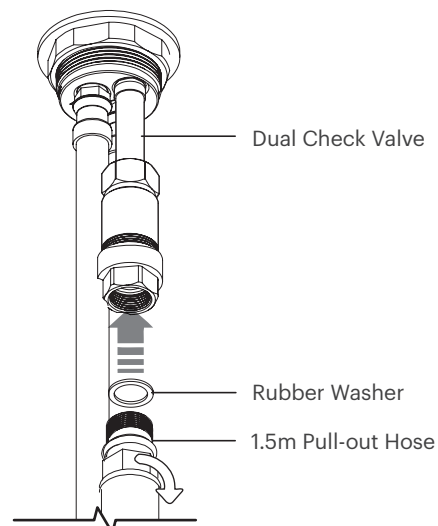
**Note:** On thicker benches, the Spacer may not be required.



## Step 3

Take the pull-out hose with sealing washer and connect it to the dual check valve. Remove any twist in the hose before tightening.

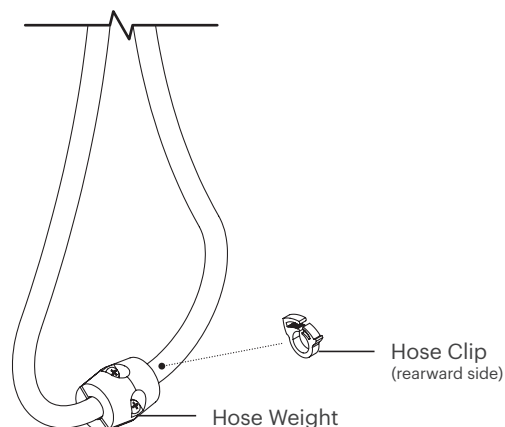
Tighten until firm and seal is achieved.



# Installation

## Step 4

Attach the hose counter weight at the lowest point of the loop on the pull-out hose, then attach the hose clip to the rearward side to prevent slippage on the hose.

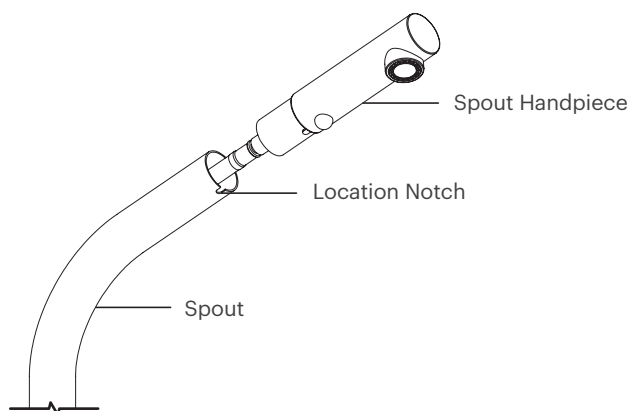


## Step 5

Prior to introducing the water supply, it is advised you pull the spout handpiece out of the spout and remove it from the hose by unscrewing in an anti-clockwise rotation.

Introduce the water supply to flush through any potential contaminants from the installation process.

Turn off water supply and return handpiece to complete the installation.



## Specifications

It is a requirement of state plumbing codes that licensed plumbers carry out all tapware installations. All installations must comply with the relevant requirements of AS/NZS3500 and local plumbing codes.

## Pressure

Maximum Hydrostatic Pressure - 1000kpa

Recommended Maximum Hydrostatic Pressure - 500 kpa. (AS/NZS 3500)

Recommended Minimum Hydrostatic Pressure - 150 kpa.

Maximum Hydrostatic Pressure may be exceeded under test conditions only in accordance with AS/NZS 3500. Where hydrostatic pressure exceeds the maximum stated above, pressure limiting valves must be installed or warranty will be void.

## Temperature

Maximum Water Temperature - 80°C

For optimum performance, Hot and Cold inlet water pressure should be equal.

## Care and Maintenance

[1] Product should be inspected for surface damage prior to installation. [2] Cleaning and handling of all finishes must be performed carefully. [3] Clean products using a soft cloth with warm soapy water only. [4] Never use harsh detergents or abrasive cleaners as these will damage the product. [5] Water marks can be removed from Matt Finishes with an application of a carnauba wax based non-abrasive polish on a microfibre cloth. [6] Do not use undue pressure when cleaning and wipe in one direction only. [7] Contact with harsh chemicals such as hair dye, hair bleach etc will result in damage to the finish. [8] Tapware should never be installed using acetone silicones. [9] Avoid the use of wax based furniture creams as this can result in a build up of deposits which will detract from the appearance. [10] Damage to finishes arising from improper installation or post installation use or failure to observe the above care and cleaning instructions will void all warranty agreements.

Please note —

Dimensions are approximate. Information provided in these installation instructions is representative of the actual products available at the time of printing. Due to our policy of continuous product development, the designs and specifications depicted are subject to change without notice. Please confirm all particulars with your product expert prior to purchase. Each product is covered by a limited warranty. Full terms and conditions are available from your product expert.

**rogerseller**

**f p @ in**

rogerseller.com.au