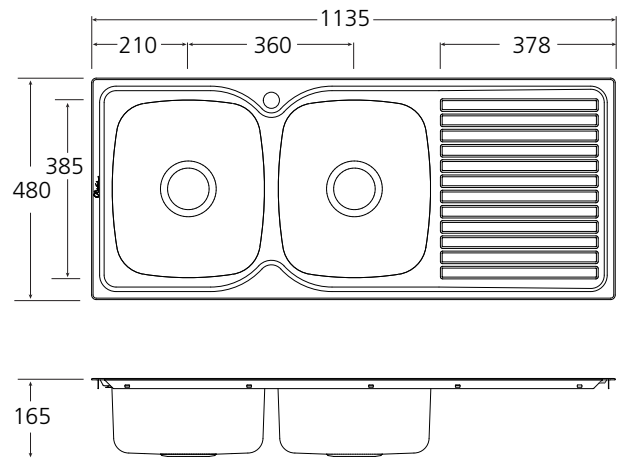


# EE71

## Tasman Endeavour

Oliveri®

LEFT HAND BOWL



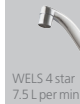
### INCLUDED ACCESSORIES

AC14



### RECOMMENDED TAPWARE

PS113



WELS 4 star  
7.5 L per min

MA4010



WELS 4 star  
7.5 L per min

### OPTIONAL ACCESSORIES

AC01



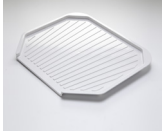
LP01



LP02



AC16



AC29



Oliveri



**Australia's  
Sink  
Manufacturer**

### SPECIFICATIONS

#### Description

Double bowl inset sink with drainer

#### Sink Size

1135W x 480H

#### Main Bowl

330W x 385H x 155D / 17L

#### Main Bowl

330W x 385H x 155D / 17L

#### Construction

2 piece, bowls & drainer seam welded

#### Material

304 grade, 18/10 polished stainless steel (0.8mm thick)

#### Installation

Topmount only

#### Fixings

Adjustable clips supplied, sealing gasket fitted

#### Cut Out Template

1115 x 460 x 15mm radius

#### Min Cabinet Size

800mm

#### Tap holes

1 tap hole (for no tap hole order product code 'EE70')

#### Waste fittings

2 x 90mm basket waste included

#### Overflow

Special order option available

#### Carton Size

1240 x 520 x 190mm

#### Weight

8.5kg

#### Warranty

Lifetime manufacturer's warranty (refer to oliverisinks.com)

For more information call **1300 13 7465** or visit **[www.oliverisinks.com](http://www.oliverisinks.com)**



facebook.com/  
**OliveriAU**



twitter.com/  
**OliveriAU**



pinterest.com/  
**OliveriAU**

© Registered trademark of Tasman Sinkware. Under its policy of ongoing product development Tasman Sinkware may from time to time change product specification without notice. All dimensions given are approximate and should be checked prior to installation. See Oliveri installation instructions for installation details.