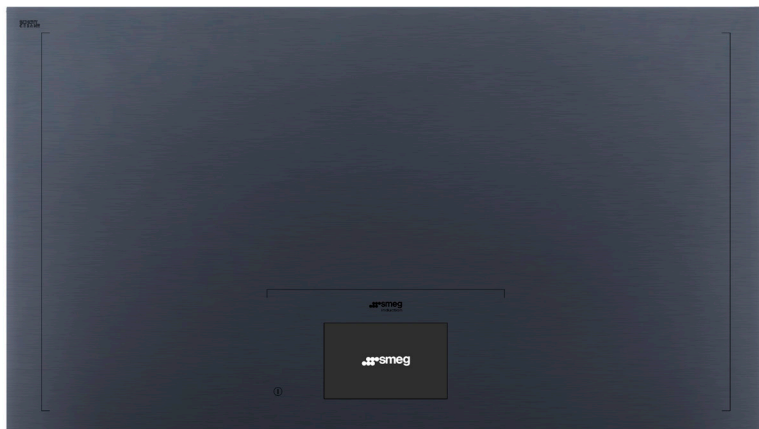


SIA1963DG

93CM LINEA INDUCTION COOKTOP

MADE IN ITALY

Since 1948



FREEDOM & FLEXIBILITY

The flexibility of cooking with up to six different pots and pans at the same time, anywhere on the cooktop, without compromising cooking performance or safety, is the ultimate freedom.



INTUITIVE DISPLAY

Operation is simple with an intuitive high resolution TFT 7" full colour touchscreen display, indicating position, size and shape of up to six pots and pans. As well as auto boil, bridge, rapid heating, keep warm and pause, the large format display also includes independent timers for ease.



AUTOMATIC POT DETECTION

Auto Pot detection will automatically recognise the position of the pot or pan for fuss free operation, while Follow Pot allows free movement while maintaining initial settings for ease of operation.

ENERGY CREDENTIALS

Save energy without compromising cooking results with the Eco Logic Advance limitation system, enabling a minimum power draw of 2.4kW.

COOKTOP FEATURES

EAN	8017709328016
Dimensions	930mmW x 515mmD x 51mmH
Finish	Neptune Grey
Installation	Topmount/fully flushed
Cutout	916mmW x 500mmD (refer to technical drawing)
Capacity	AreaZone 84.0 x 40.0cm Up to 6 pots 2.40kW - Booster 3.70kW
Functions/features	Auto boiling function Simmering function Melting/low temperature cooking Keep warm function Pause function Rapid heating Rapid level selection
Timer	End of cooking acoustic alarm Residual time indicator 6 x timer
Controls	VivoScreen Max Slider switch 17 power levels
Safety	Pan detection Automatic cut-off Residual heat indicator Control lock
Power	220-240V, 50/60Hz 11100W 49A Connection
Pan size	Automatic pan size recognition (minimum 10cm)
Warranty	Five years parts and labour

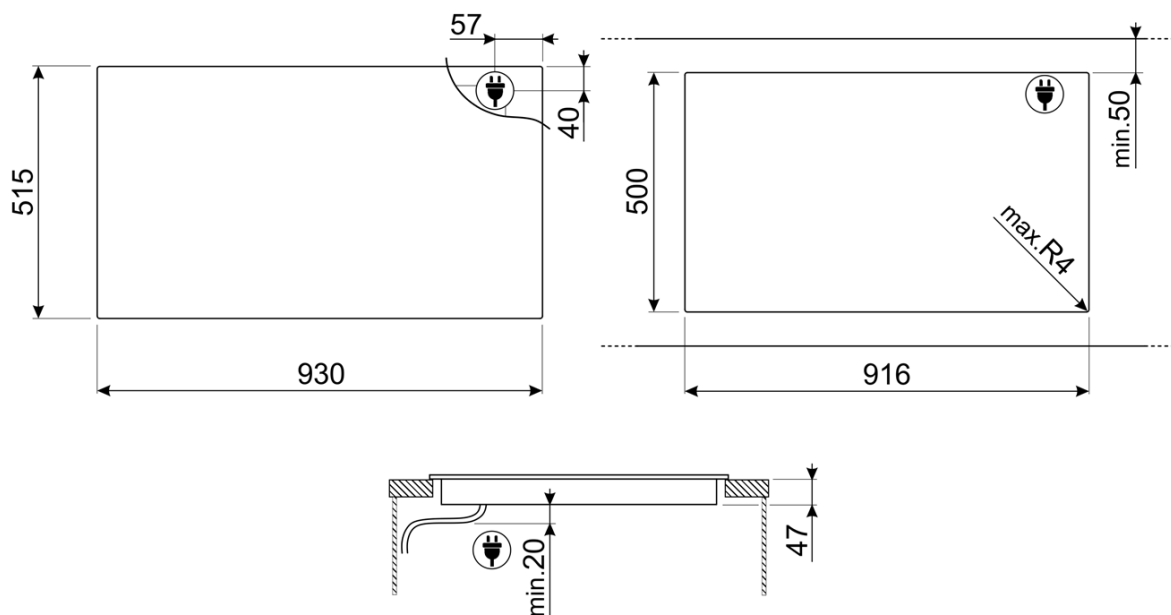
SIA1963DG

93CM LINEA INDUCTION COOKTOP

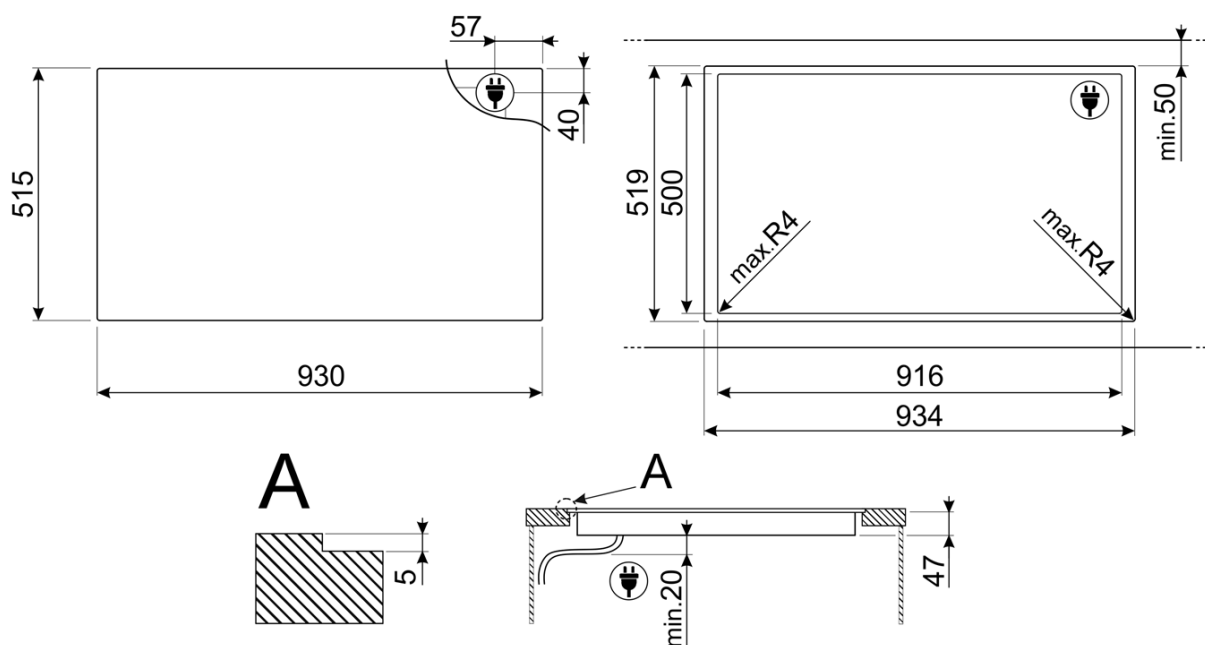
MADE IN ITALY

Since 1948

TOP MOUNT:



FLUSH MOUNT:



PLEASE NOTE: drawings are not to scale. They are to assist only.

WARNING: technical specifications and product sizes can be varied by the manufacturer without notice.

Cutouts for appliances should only be by physical product measurements. The above information is indicative only.