



**Congratulations on your purchase!**  
**Thank you for choosing a Sirius product.**

## **CANOPY RANGEHOOD**

### **ONBOARD INSTALLATION INSTRUCTIONS**

SLTC 97 900  
SL22 900  
SL7 1200  
SL107 S900  
SLTC 107 G900  
SL107 S1200

EAN# 9351116001612  
EAN# 9351116000660  
EAN# 9351116000813  
EAN# 9351116001728  
EAN# 9351116001735  
EAN# 9351116001742



[www.siriusbrand.com](http://www.siriusbrand.com)





### **BEFORE YOU INSTALL – please read**

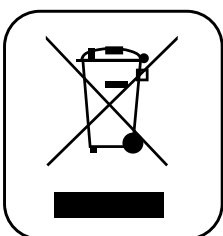
Sirius warranty covers only Sirius product. If you choose to install a non-Sirius branded accessory such as flexible ducting, Sirius will only warrant the hood and motor. If installation is found to be the cause of failure or issue then charges will apply for service and parts.

Flexible ducting is not permitted under any circumstances. Flexible ducting has been found to increase noise levels, increase vibration and reduce airflow. Sirius Semi-rigid or solid ducting can be used in lieu. There is a range available to suit any application.

**Ducting available at [www.siriusbrand.com](http://www.siriusbrand.com)**

**A reduction in the duct diameter from stated ducting size will void warranty.**

If you are in doubt about the ducting, please contact Sirius on 1300 762 219 prior to installation



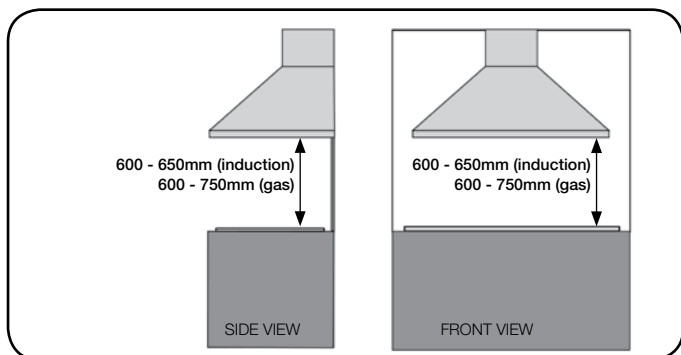
The symbol on the product or on its packaging indicates that this product may not be treated as house-hold waste. Instead it shall be handed over to the applicable collection point for the recycling of electrical and electronic equipment. By ensuring this product is disposed of correctly, you will help prevent potential negative consequences for the environment and human health, which could otherwise be caused by inappropriate waste handling of this product. For more detailed information about recycling of this product, please contact your local city office, your household waste disposal service or the shop where you purchased the product. This appliance is marked according to the European directive 2002/96/EC on waste electrical and electronic equipment (WEEE).



## WARNING


**Min. 600mm - Max. 650mm** for induction cooktops.  
**Min. 600mm - Max. 750mm** gas cooktops.


If the rangehood is positioned above the max height recommended, warranty may be compromised as performance of the rangehood will be affected. Measurement is taken from the top of the trivets to the underside of the hood. (Fig.1)



(Fig. 1)

- The air being drawn can't be conveyed through or into a duct used to let out fumes from appliances fed by energy other than electric power (eg. centralized heating, radiators, water heaters, etc.).
- Attention: remove any possible PVC film from the stainless steel, including the filters.
- To externally vent, please comply with the pertaining rules given by competent authorities.
- Provide the room with an adequate ventilation when a rangehood and appliances fed by energy other than electric power (gas, oil, or coal stoves, etc.) are used simultaneously. The rangehood, when evacuating the air, could generate a negative pressure in the room which can't exceed the limit of 0.04 mbar, in order to avoid the suck of exhausts deriving from the heat source. Therefore the room should be provided with air intakes to allow a constant flow of fresh air.

If the rating label in the rangehood shows the symbol , the appliance is built in class II° and it **does not need** any earth connection.

If the rating label in the rangehood does not show the symbol , the appliance is built in class I° and it **needs** the earth connection.

When performing the electrical connections on the appliance, please make sure that the current-tap is provided with earth connection and that voltage values correspond to those indicated on the label placed inside the appliance itself.

Before carrying out any cleaning or maintaining operations, the appliance needs to be switched off. If the appliance is not provided with a non-separable

flexible cable and plug, or with another device ensuring omnipolar disconnections from the grid, with an opening distance between the contacts of at least 3mm, then such disconnecting devices must be supplied within the fixed installation. If the fixed appliance is endowed with a supply cord and a plug, the appliance has to be put in a place where the plug can be reached easily.

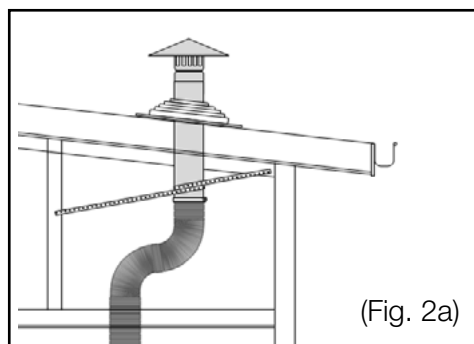
The use of materials which can burst into flames should be avoided in close proximity of the appliance. When frying, please pay particular attention to fire risk due to oil grease. Being highly flammable, fried oil is especially dangerous. Do not use uncovered electric grills. In order to avoid possible fire risk, all instructions for grease-filter cleaning and for removing eventual grease deposits should be strictly followed.

When ducting rangehood, options are as follows:

### Roof vent - EASYROOF 150T/M EASYROOF 200T/M

\*Kit includes roof flashing

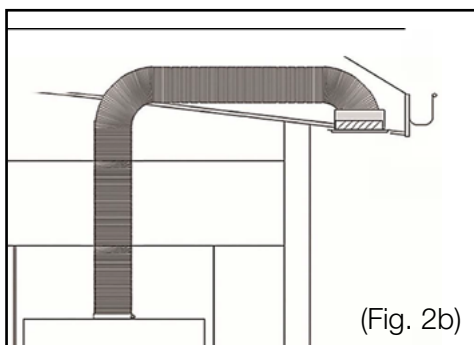
[Download installation guide](#)



(Fig. 2a)

### Eave vent - EASYEAVE 150/200

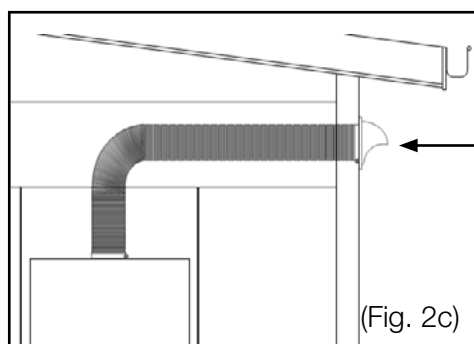
[Download installation guide](#)



(Fig. 2b)

### Wall vent - EASYWALL 150/200

[Download installation guide](#)



Dome featured on 200mm kit only

(Fig. 2c)

# CANOPY RANGEHOOD INSTALLATION - ONBOARD MOTOR



**Before installing the appliance, make sure that none of the parts are damaged in any way. In case of damaged parts, contact your retailer and do not proceed with installation. Read all of the following instructions with care before installing the appliance.**

- Use ducting within the min/max specifications
- Limit the number of ducting bends.
- Do not make any changes in ducting diameter (recommended constant diameter: Ø 150 mm / Ø 200 mm or equal surface area).

Before installing the appliance - in order not to damage the appliance itself - the metal grease filter should be removed. These filters could be removed by pushing the handles towards the back side of the rangehood and pulling it downwards to unfasten it from its slot. (Fig.3).

To install the appliance please follow these instructions:

- The appliance must be installed by qualified technicians, or where possible use a Sirius recommended installer. See [siriusbrand.com](http://siriusbrand.com). In order to avoid damage to the electronic parts of the appliance, please do not use additional screws.
1. Prepare the power supply - 240 volts.
  2. Prepare a hole for the exhaust - 160mm diameter for single motor & 210mm for twin motor versions.
  - Maximum length of ducting should not exceed 7 metres.
  - Do not use screws to fix the ducting to the rangehoods as they will prevent the movement of non-return valves.
  - Limit the number of elbows in the ducting, since each elbow reduces the duct efficiency by 1 metre. (i.e. if you use two 90° elbows, the length of ducting must not exceed 5 metres.)
  - Avoid abrupt direction changes.
  - Use 150mm constant diameter ducting for the whole length for the single motor, 200mm ducting for the twin motor model.
  - **The use of Sirius ducting will increase the warranty of the unit to 4 years.**

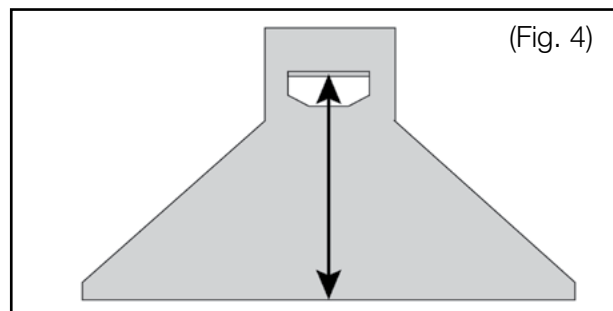


1. The rangehood is quite heavy, so two people will be needed for installation.



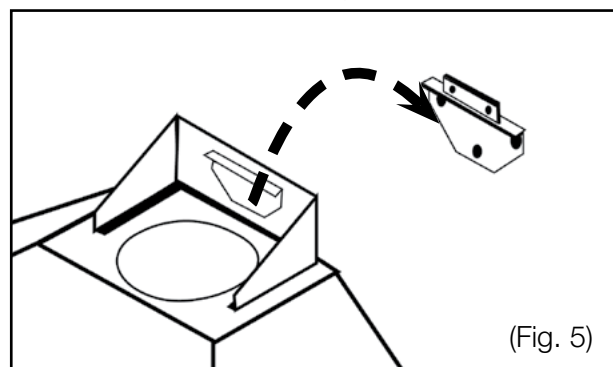
2. Before connecting any ducting to the motor, make sure the non-return valves - which are on the air outlet of the motor - can swing open.

3. Using the supplied bracket template (pg. 7), mark the location of the holes that need to be drilled in the wall, being careful to make sure that the wall behind is clear of electrical wiring, plumbing, pipes etc. Note: Be sure to set the height of the rangehood between the minimum and maximum height requirements as per diagram Fig. 1( Pg. 3). This can be done by measuring from the lowest point of the rangehood to the horizontal support bar. (Fig. 4)



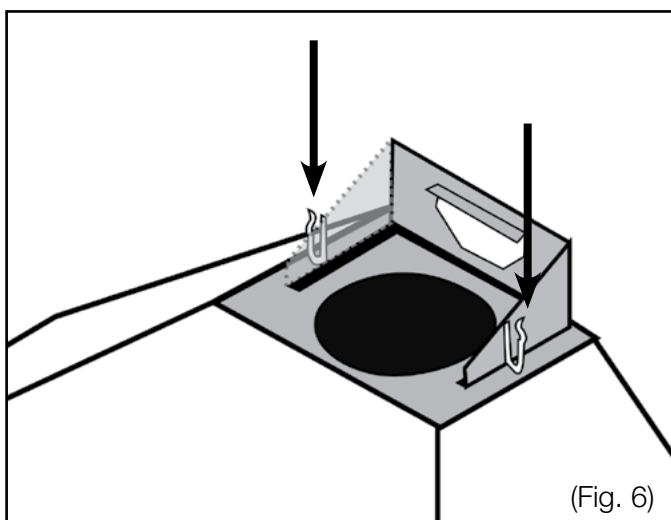
NOTE: Model measurements will vary.  
Please check specific model specs.

4. Using an 8mm drill bit, pre-drill the holes that will hold the bracket to the wall. (Using bracket template)
5. Insert the supplied plastic dowels to the pre-drilled holes and fix bracket to the wall with the supplied screws. (Note: Please use a spirit level to make sure the bracket is perfectly level.)
6. Once the bracket is secure, using two people, lift the hood and drop the horizontal support bar onto the fixed bracket (Fig. 5).



(Note: There are additional holes on the inside of the hood to secure the rangehood flush to the wall and completely stable. (Hole locations will vary per model.)

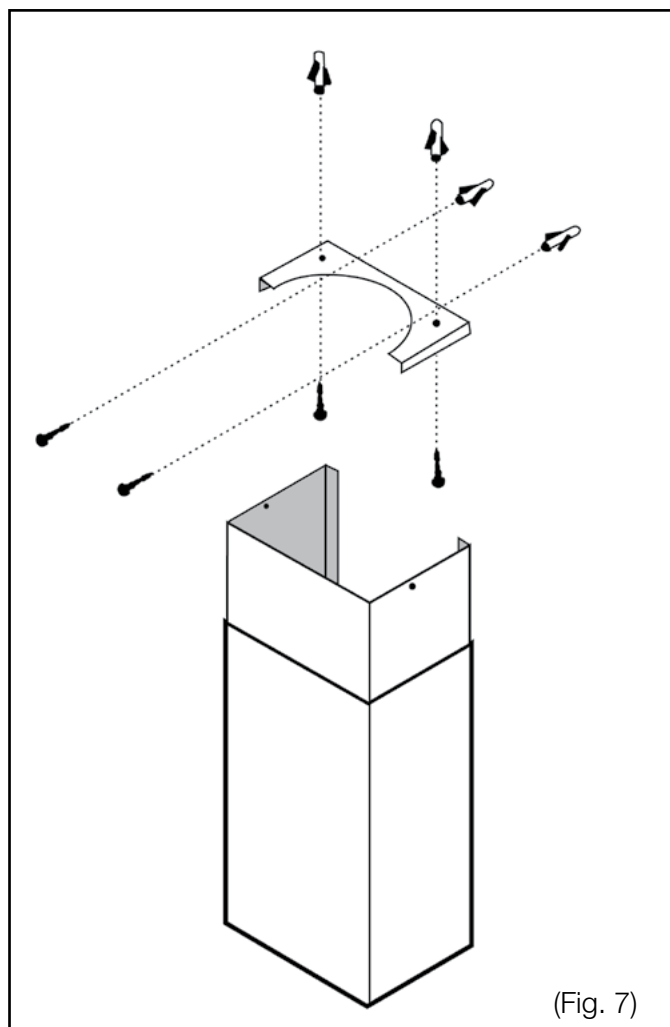
7. Connect your Sirius ducting (see [www.siriusbrand.com](http://www.siriusbrand.com) for approved ducting) to the outlet collar on the rangehood and secure in place with a ring clamp if you are using semi rigid ducting. If you are using solid/rigid ducting and external duct connector is required. (Note: do not fix the ducting in place with screws as they will prevent the movement of the non-return valves). (See Fig. 2 for ducting options). Complete all of the duct work to the atmosphere before fixing the flue covers in place to ensure the ducting has not come free.
8. Insert the upper flue cover into the cover into the lower flue cover and mount into the channel on the top of the rangehood. There are two spring loaded clips that need to be on the inside of the lower flue cover to secure in place. (Fig 6.)



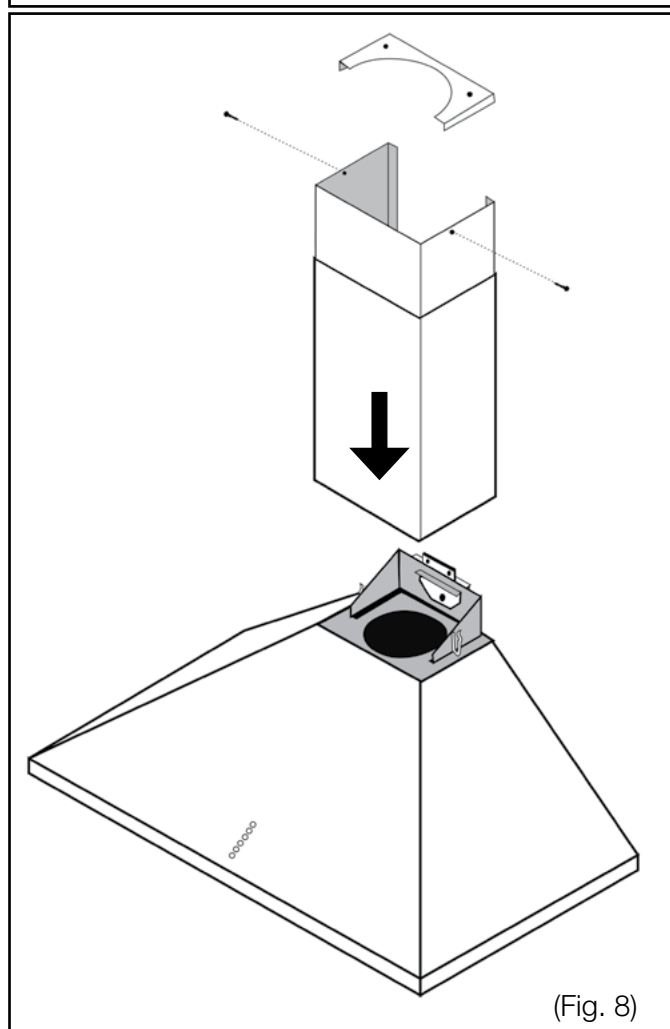
9. Telescope the upper flue cover to the ceiling and mark with a pencil the outer line of the cover, this will give you the exact location of where the top fixing bracket needs to be fitted to the ceiling.
10. Fix the top fixing bracket into place using the supplied screws (Fig.7) and telescope the upper flue cover over the bracket and secure in place with the very small supplied screws. (Fig 8.)



**Please do not fix shroud permanently.  
Must be removable for servicing purposes.**



(Fig. 7)

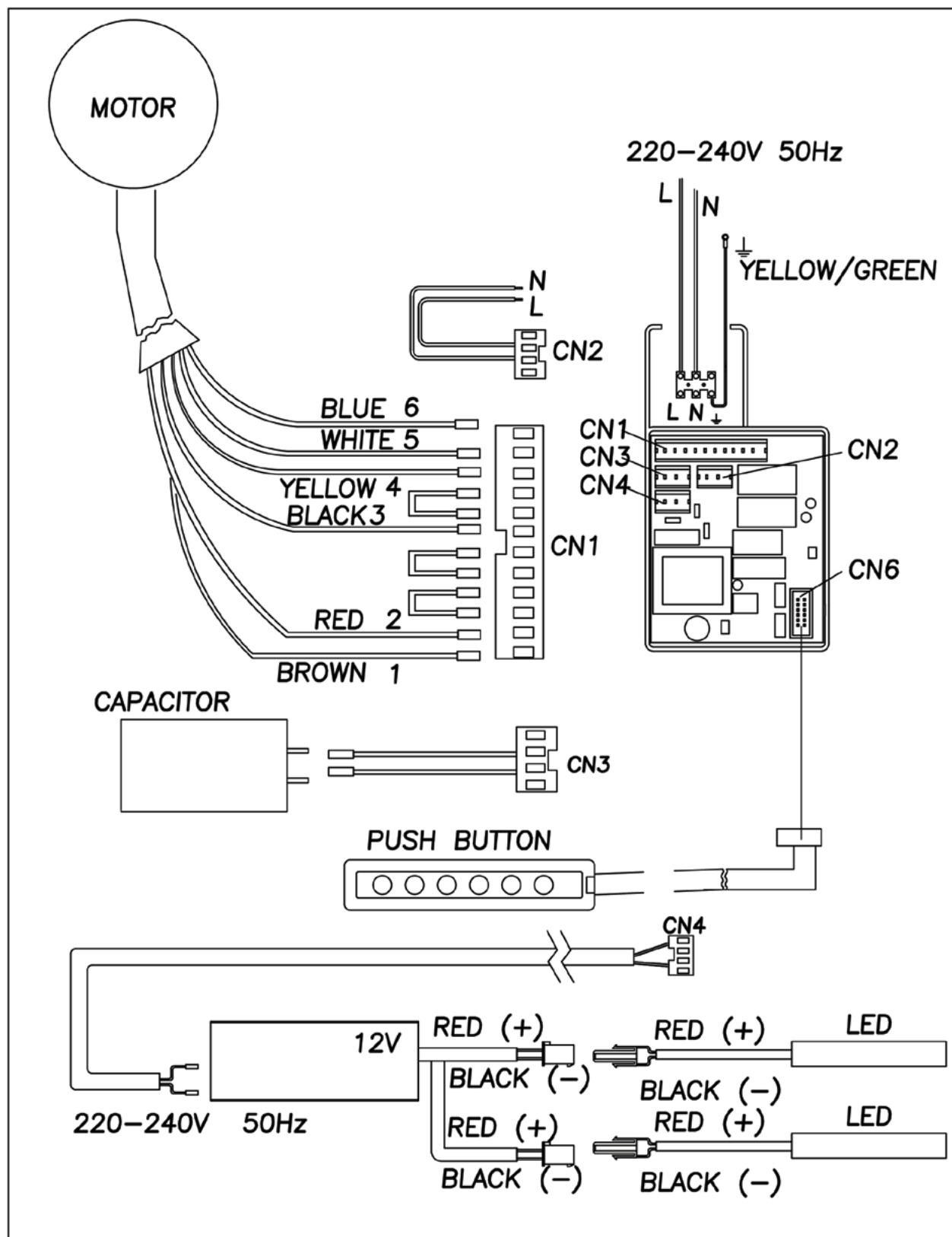


(Fig. 8)



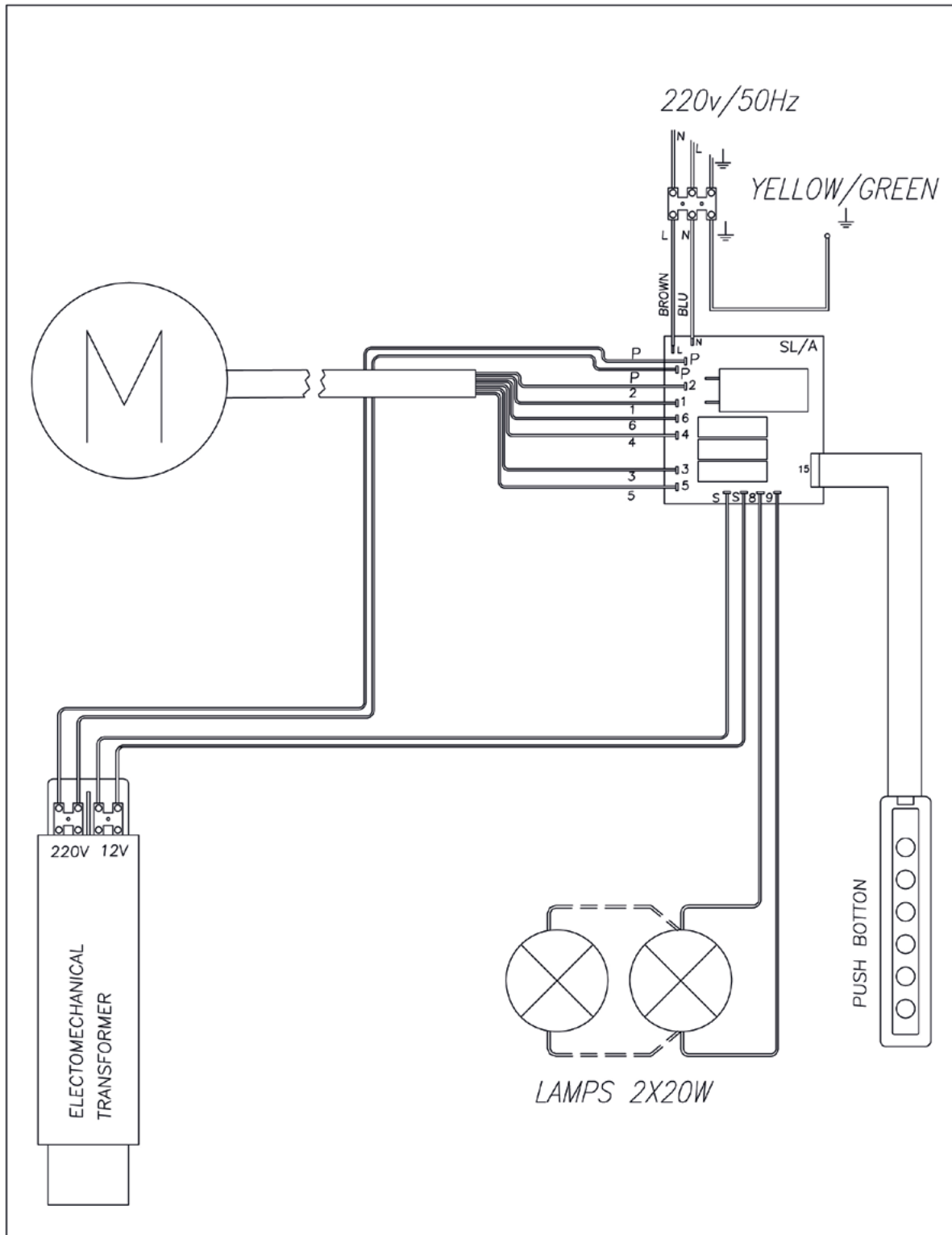
## SLTC 97 900 WIRING DIAGRAM

### WIRING DIAGRAM SLTC97 900



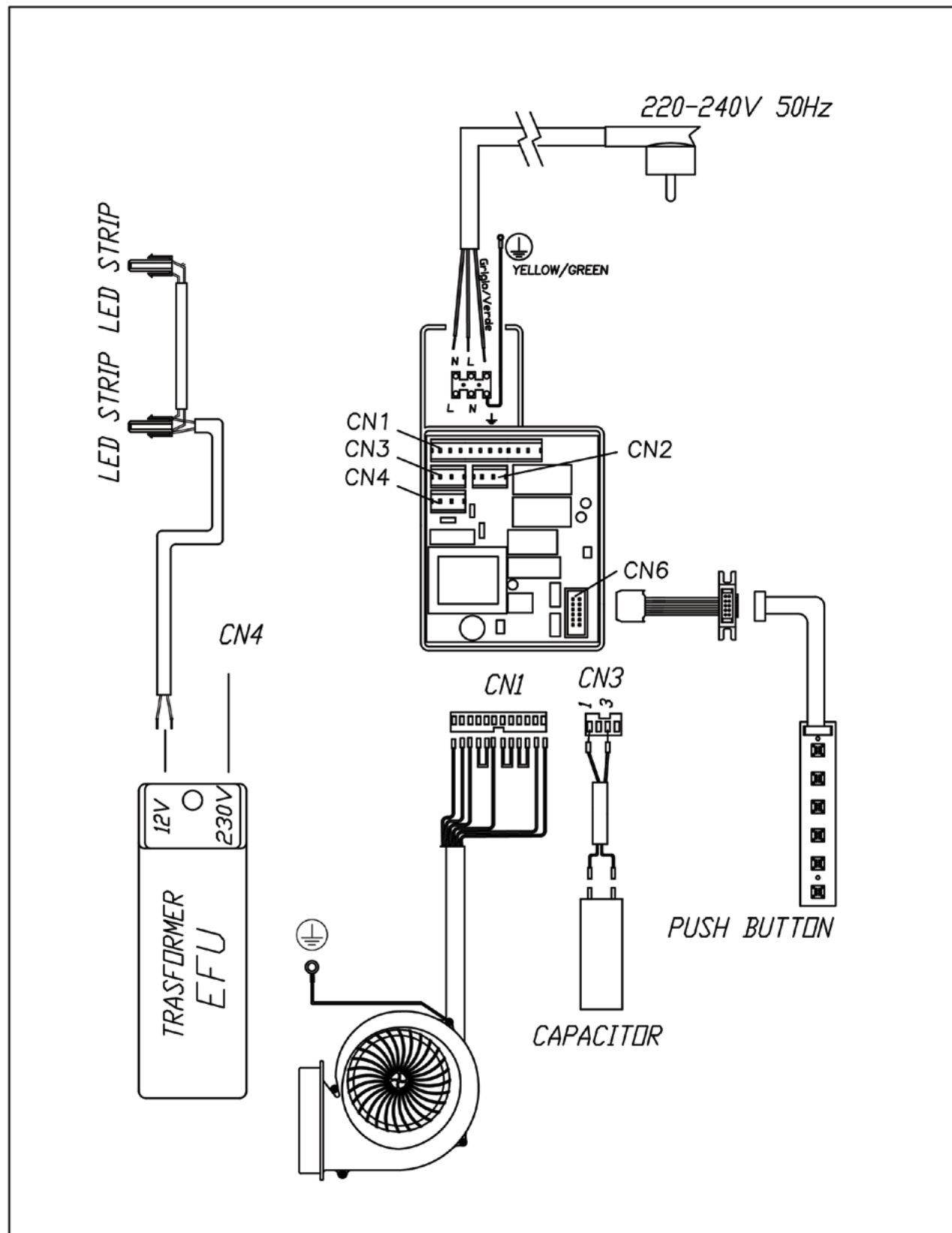
## SL22 900 WIRING DIAGRAM

### WIRING DIAGRAM SL2 – SL19 – SL22



## SL107 S900 WIRING DIAGRAM

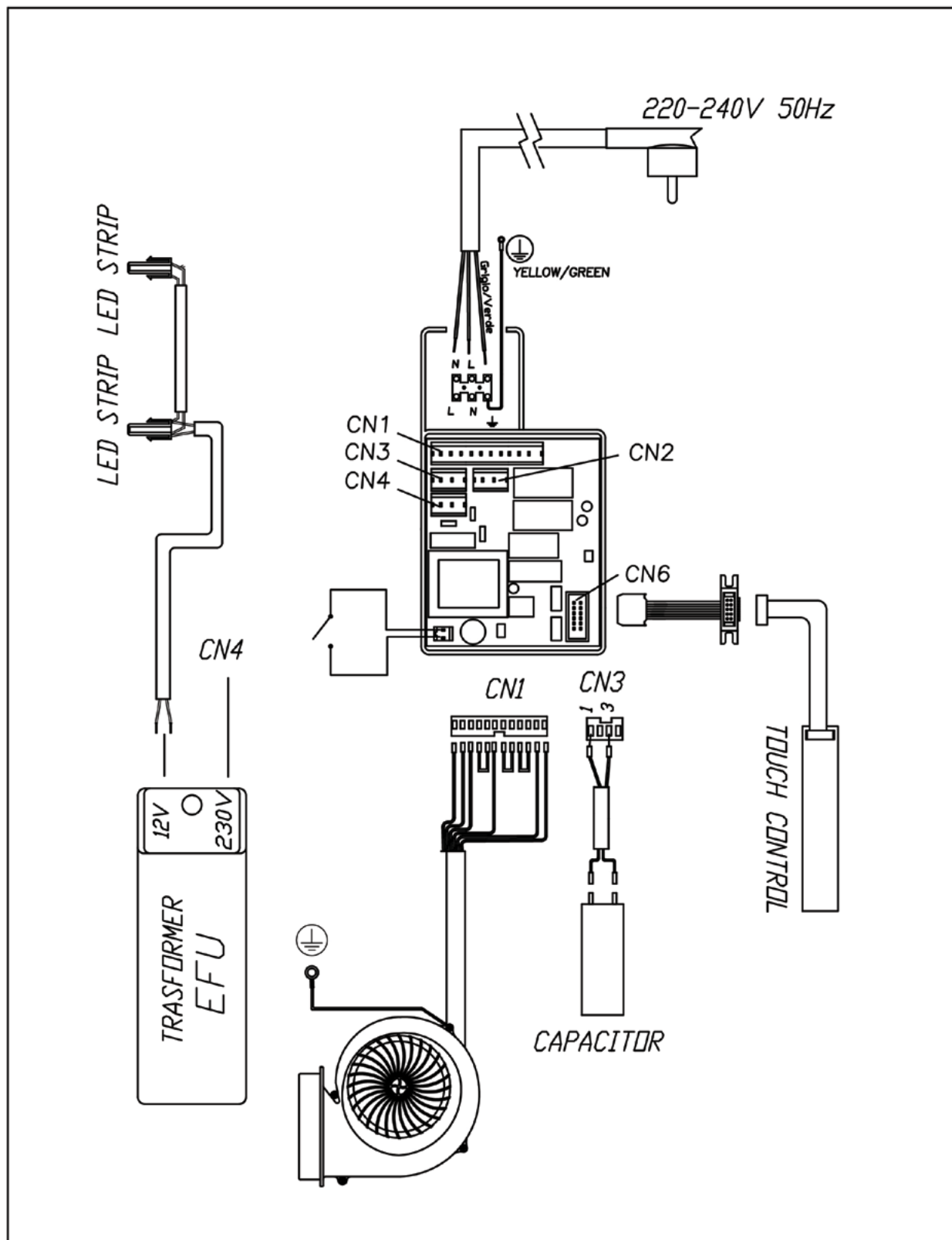
### WIRING DIAGRAM SL107 S 900



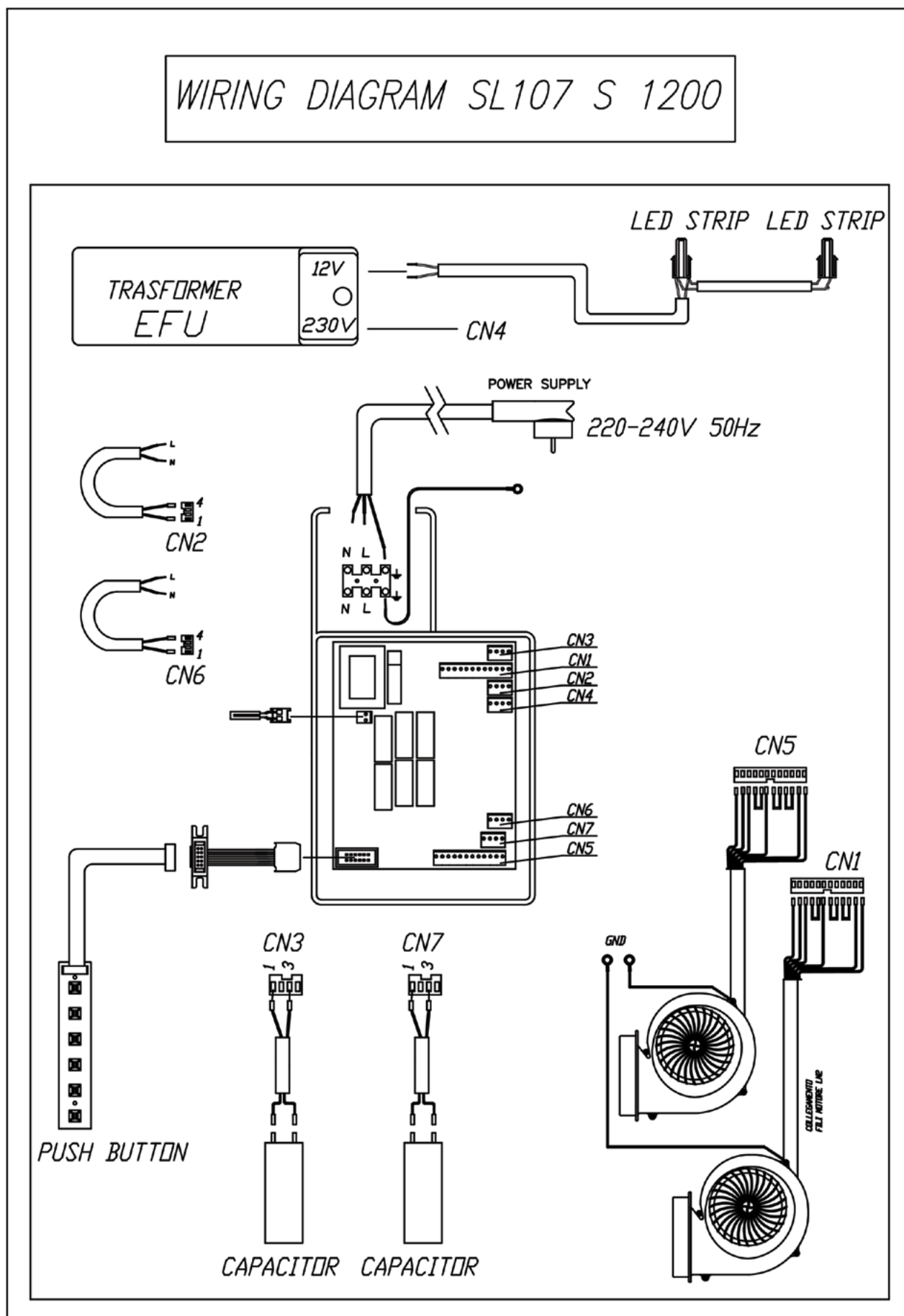


## SLTC 107 G900 WIRING DIAGRAM

### WIRING DIAGRAM SLTC107 G 900



# SL 107 S1200 WIRING DIAGRAM



## BRACKET TEMPLATE

