



RB492504

RA430100:

Storage container with lid, anthracite

RA450012:

Water filter Vario 400

RA421910:

SS door 91,4cm/36" for RB492

RA423340:

Side trims, 2 pieces, for RB

RA425110:

Vario SS handle 1131 mm

RA425910:

Vario SS handle 810 mm

RA428910:

SS doors w/o handle 91,4cm/36" for RB492

RA460000:

Installation kit SxS

RA460013:

Heating side kit 230V

RA460030:

Frontpanel connection for RB

RA464913:

Vent grille 91.4cm/36", filter, RB 492

## Vario fridge-freezer combination 400 series

212.5 x 90.8 cm, soft close flat hinge

RB492504

- The opening assistance for handle and handleless options reveals a stainless steel interior with glare-free lighting and discreet shelving rails, movable door racks.
- Opening assist for door with two options
- Glare-Free LED Light Spots
- Fresh cooling drawer close to 0 °C
- Integrated ice maker
- Total volume 555 l.

Stainless steel interior with solid anthracite aluminium elements

4 brilliant LED light spots with warm white, glare-free light (3500 K) within cooling area and drawers.

Opening assist for door with two options:

1. Push-to-open function for integration into handleless furniture front 2. Pull-to-open function to facilitate opening the door using a handle

Flat stainless steel inner door, full-length

Almost invisible rail system for shelves and door racks for flexible positioning

Solid anthracite aluminium door racks

1 fresh cooling drawer close to 0 °C with manually adjustable temperature and one fresh cooling drawer with manually adjustable humidity

Integrated ice maker with fixed inlet water connection

Fully extendable freezer drawer with practical divider in anthracite

TFT touch display

### Handling

TFT touch display operation.

Clear text display.

### Technical Features

Dynamic cold air distribution.

Automatic defrosting with defrost water evaporation.

Cushioned door closing system.

Activated charcoal air filter.

Rest mode certified by Star-K.

When rest mode is active, the appliance can only be opened using a handle.

Open-door and malfunction alarm.

### Cooling

No-Frost technology with fast cooling.

Temperature adjustable from +2 °C to +8 °C.

Flat door rail system with fully flexible positioning of door racks.

3 height adjustable door racks, 1 of which is extra deep.

389 l

### Fresh cooling close to 0 °C

1 fully extendable fresh cooling drawer close to 0 °C with transparent front, illuminated.

Cushioned closing system.

Temperature can be adjusted manually.

Ideal for meat, fish and poultry.

### Fresh cooling

1 fully extendable fresh cooling drawer with transparent front, illuminated.

Cushioned closing system.

Humidity can be adjusted manually.

Ideal for fruit and vegetables.

### Freezing

No-frost technology with fast freezing at -30 °C.

Temperature adjustable from -14 °C to -24 °C.

4-star freezer compartment.

Freezing capacity 16 kg/24 h.

Storage time after a malfunction 17 h.

2 fully extendable inside drawers.

Interior lighting with 2 LED light spots, warm white light.

Net volume 166 l litres.

### Ice maker

Integrated in the freezer compartment, with fixed inlet water connection.

Particle filter for water inlet, integrated in ventilation grill area.

Saturation indicator shown in TFT touch display.

Can be switched off.

Ice cube production approx. 1.6 kg/24 h.

Removable ice storage container with approx. 3 kg capacity.

### Consumption data

5 stars.

Energy consumption 336 kWh/year.

Noise level 42 dB (re 1 pW).

### Planning notes

Flat hinge.

Door hinge right, reversible.

Door opening angle of 115°, fixable at 90°.

Max. door panel weight:

Door 47 kg. Drawer 12 kg.

Shut-off valve for water connection must be planned next to the appliance and always be accessible.

If the water pressure exceeds 0.8 MPa (8 bar), connect pressure relief valve between water tap and hose set.

### Connection

Total connected load 0.300 KW.

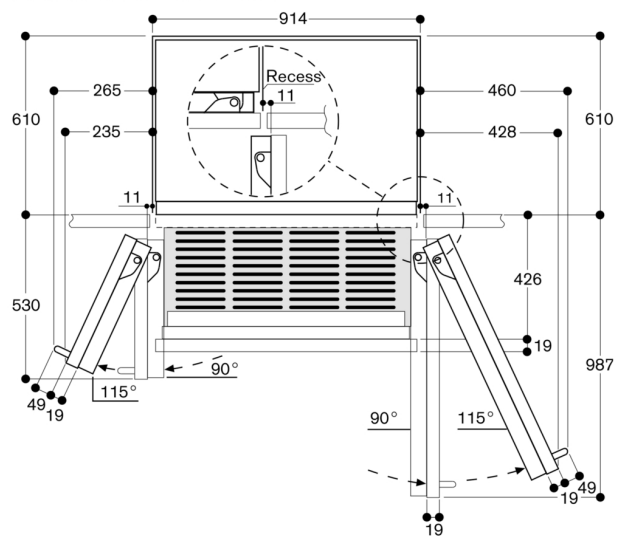
Connecting cable 3.0 m, detachable.

Water inlet.

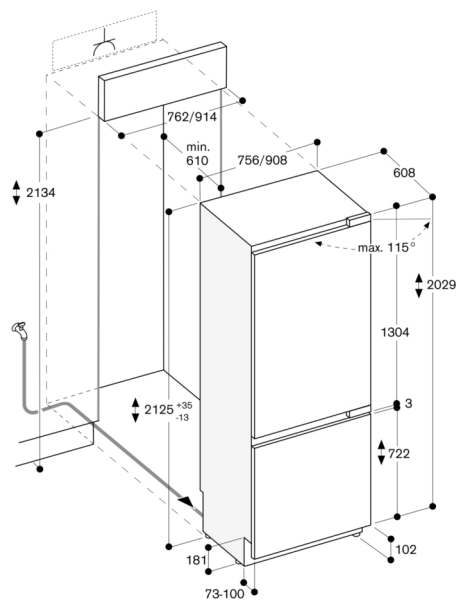
Supply hose 2.0 m with 3/4" connection.

Water pressure 2 to 8 bar.

Wall clearance RB 492/RY 492



In the drawing, a unit front thickness of 19 mm and a Gaggenau unit handle of 49 mm were taken as a basis.



The maximum door panel dimensions are based on a clearance of 3 mm.

