

Gas by Rogerseller Sink & Basin Sets

Installation
Instructions
INS432 Rev00 Dec23

Specification

It is a requirement of state plumbing codes that licensed plumbers carry out all tapware installations. All installations must comply with the relevant requirements of AS/NZS3500 and local plumbing codes.

Pressure

Maximum Hydrostatic Pressure - 1000kpa

Recommended Maximum Hydrostatic Pressure - 500 kpa. (AS/NZS 3500)

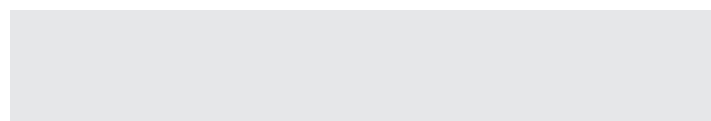
Recommended Minimum Hydrostatic Pressure - 150 kpa.

Maximum Hydrostatic Pressure may be exceeded under test conditions only in accordance with AS/NZS 3500. Where hydrostatic pressure exceeds the maximum stated above, pressure limiting valves must be installed or warranty will be void.

Temperature

Maximum Water Temperature - 80°C

For optimum performance, Hot and Cold inlet water pressure should be equal.



Sink Set

3506017701 — Chrome

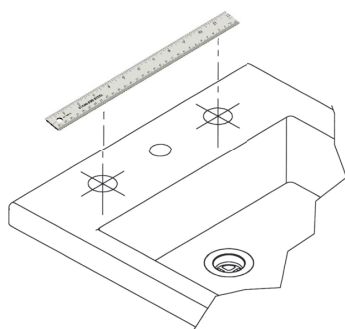
Basin Set

3506017801 — Chrome

Wels 6 Star - 4.5Lpm

● Other finishes available

Installation



Step 1

Prior to commencing, ensure this tapware is suitable and compatible with the intended basin or vessel.

Maximum Hole Centres - 230mm

Maximum Bench Thickness - 60mm

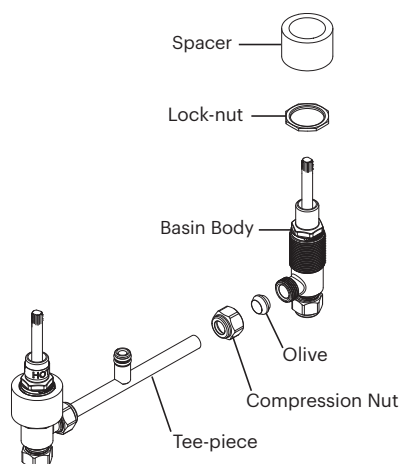
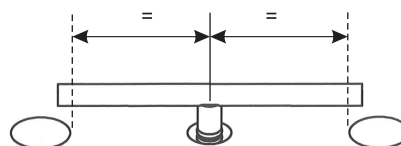
Tap Hole Size - 32-42mm

Spout Hole Size - 22-35mm

Step 2

Trim the Tee-Piece to suit the centre distance of the basin tap holes.

As a guide, place the tee piece in the centre of the centre hole and mark the inner edge of the tap holes. Trim at this point.



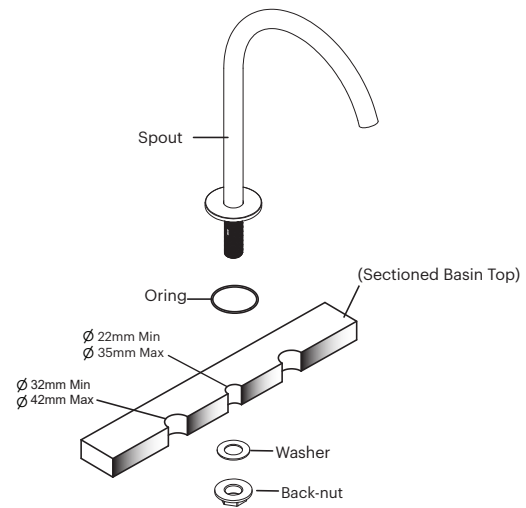
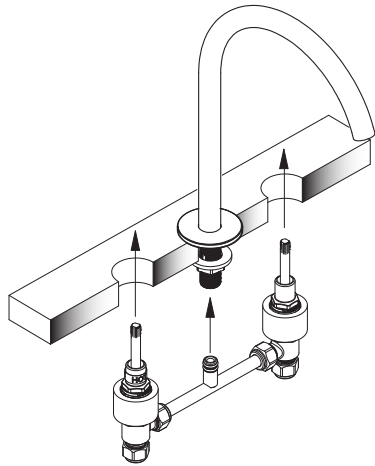
Step 3

Take the pre-assembled basin bodies and screw one lock-nut on each, all the way to the bottom of the thread. Loosen the compression nuts and fit the tee-piece between the two bodies. (hand tight)

Place the assembly into the basin holes to check centre distances are correct, adjust as necessary.

Step 4

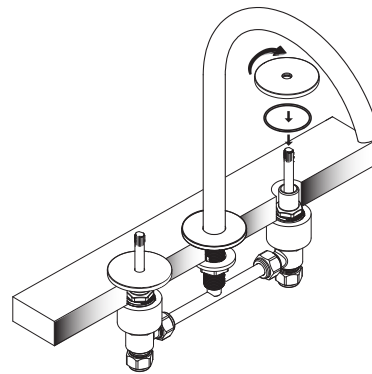
Install the spout in the centre hole as shown. Ensure the oring is sitting neatly in the recess allocated in the spout base and evenly around the hole to seal out any water from entering cabinetry.



Step 5

Install the assembled tee-piece into the basin / bench ensuring tee-piece orings are located inside the spout inlet nipple.

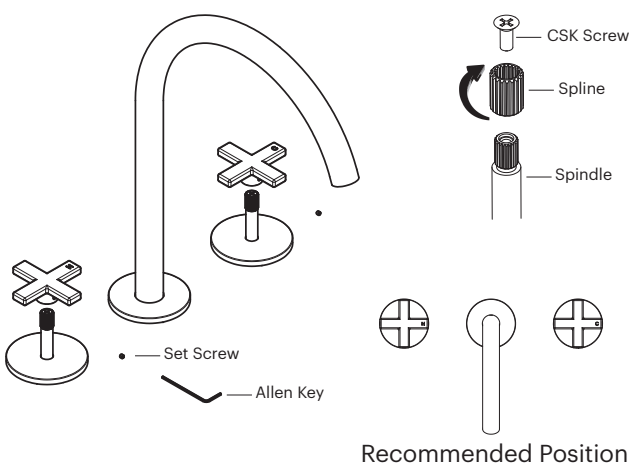
Tip - lightly grease tee-piece orings with food grade grease to prevent damage when inserting.



Step 6

Place the orings over the spindles and onto the basin top. Carefully push the flanges onto the spindles and screw down (clock-wise) until firm ensuring the orings locate neatly and evenly in the flange recess.

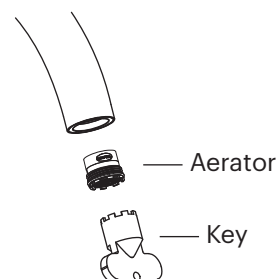
From the underside tighten the lock-nut until assembly is firmly secured then connect water supply lines and tighten all compression nuts.



Step 7

Engage the handle in the recommended positioning as shown in the adjacent image. If the desired handle orientation cannot be achieved, remove handle, undo the CSK Screw lift off spline and move the spline one tooth at a time in the same direction and re-fit the handle until perfect positioning is achieved.

Fix in place using the supplied Allen key to tighten the handle set screw.



Step 8

Remove the Aerator using the key supplied.

Introduce the water supply and turn on both taps to flush the installation and supply lines. Check for leaks and remedy as required.

Re-install the aerator to complete the installation.

Specifications

It is a requirement of state plumbing codes that licensed plumbers carry out all tapware installations. All installations must comply with the relevant requirements of AS/NZS3500 and local plumbing codes.

Pressure

Maximum Hydrostatic Pressure - 1000kpa

Recommended Maximum Hydrostatic Pressure - 500 kpa. (AS/NZS 3500)

Recommended Minimum Hydrostatic Pressure - 150 kpa.

Maximum Hydrostatic Pressure may be exceeded under test conditions only in accordance with AS/NZS 3500. Where hydrostatic pressure exceeds the maximum stated above, pressure limiting valves must be installed or warranty will be void.

Temperature

Maximum Water Temperature - 80°C

For optimum performance, Hot and Cold inlet water pressure should be equal.

Care and Maintenance

[1] Product should be inspected for surface damage prior to installation. [2] Cleaning and handling of all finishes must be performed carefully. [3] Clean products using a soft cloth with warm soapy water only. [4] Never use harsh detergents or abrasive cleaners as these will damage the product. [5] Water marks can be removed from Matt Finishes with an application of a carnauba wax based non-abrasive polish on a microfibre cloth. [6] Do not use undue pressure when cleaning and wipe in one direction only. [7] Contact with harsh chemicals such as hair dye, hair bleach etc will result in damage to the finish. [8] Tapware should never be installed using acetone silicones. [9] Avoid the use of wax based furniture creams as this can result in a build up of deposits which will detract from the appearance. [10] Damage to finishes arising from improper installation or post installation use or failure to observe the above care and cleaning instructions will void all warranty agreements.

Dimensions are approximate. Information in this installation instruction is representative of the product available at the time of printing. Due to our policy of continuous product development, the design and specifications depicted are subject to change without notice. Please confirm all particulars with your client advisor prior to purchase.

rogerseller

rogerseller.com.au