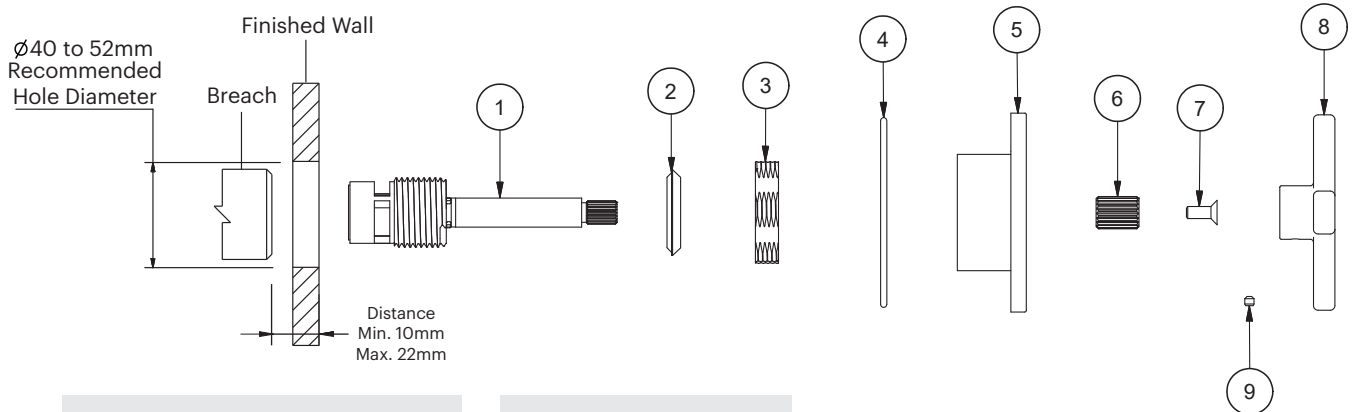


# Gas by Rogerseller Wall Basin & Bath Sets

Installation  
Instructions  
INS431 Rev00 Dec23

# Specification



Gas by Rogerseller

Wall Basin & Bath Sets

Wall Bath Set

3506017401 — Chrome

Wall Basin Set

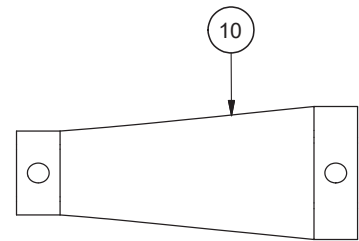
3506017501 — Chrome

Wels 6 Star - 4.5Lpm

Other finishes available

## Parts List

1. Spindle
2. Sealing Washer
3. Lock-nut
4. Oring
5. Wall Flange
6. Spline Adaptor
7. CSK Screw
8. Handle
9. Set Screw
10. Tool

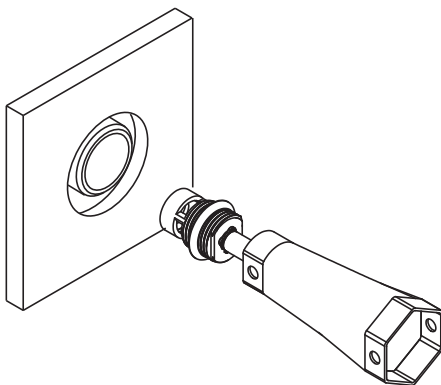
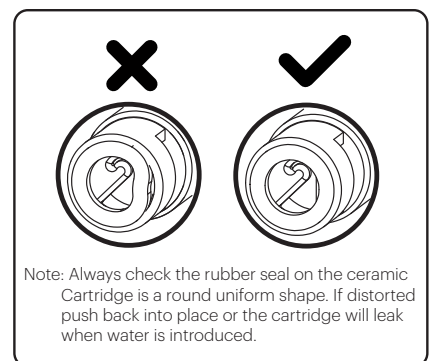
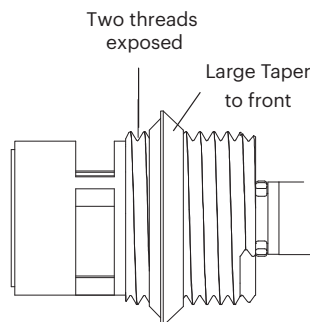


# Installation

## Step 1

Screw the sealing washer onto the spinle as shown in the adjacent image leaving only two threads exposed.

Important: the bigger taper on seal goes toward the front.



## Step 2

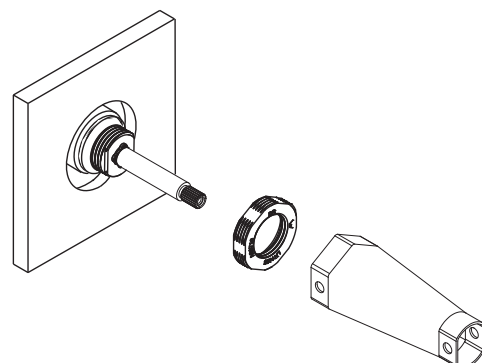
Screw the spindle in by hand until the seal reaches the in wall body.

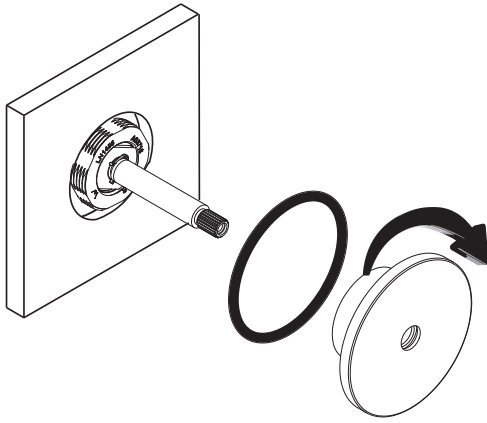
Using the supplied tube spanner, engage the narrow end onto the wrenching flats and tighten until the spindle reaches the seat and just nip it up. (Approx. 1/8 turn or 8N/m)

## Step 3

Screw the Lock Nut onto the Spindle and tighten using the opposite end of the tube spanner until a watertight seal is achieved. (Torque - 25N/m)

We recommend checking water tightness at this stage prior to completing installation.



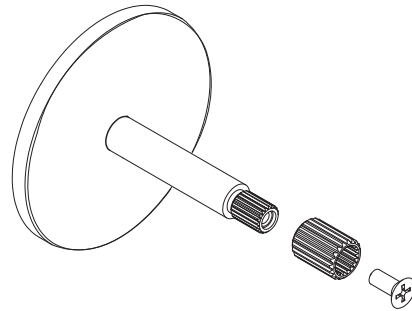


#### Step 4

Ensure the O-ring is locked neatly between the finished wall and the inside of the wall flange. Screw the flange onto the lock-nut all the way until firmly against the wall.

#### Step 5

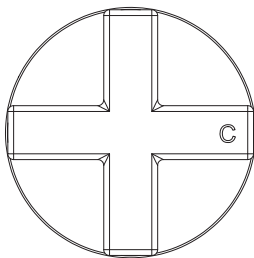
If not already done so, apply the spline adaptor to the end of the spindle and fix in place using the screw provided.



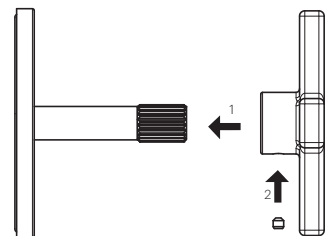
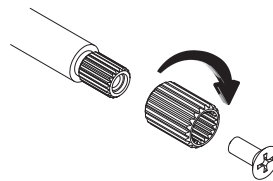
#### Step 6

Engage the handle in the recommended positioning as shown in the adjacent image. If the desired handle orientation cannot be achieved, remove handle, undo the CSK Screw and move the spline one tooth at a time in the same direction and retry fitting the handle until perfect positioning is achieved.

Fix in place using the handle set screw.



Recommended Handle Orientation

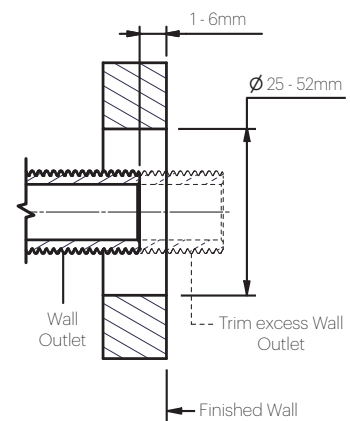


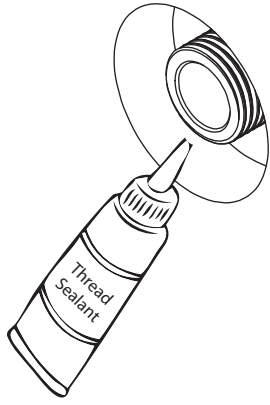
## Spout Installation

#### Step 1

Using a nipple cutter, trim the outlet back until it is just inside the finished wall, within the range stated in the illustration.

*Note: When trimming, we recommend dry fitting the complete product prior to applying thread sealants to ensure the desired spout orientation is achievable.*





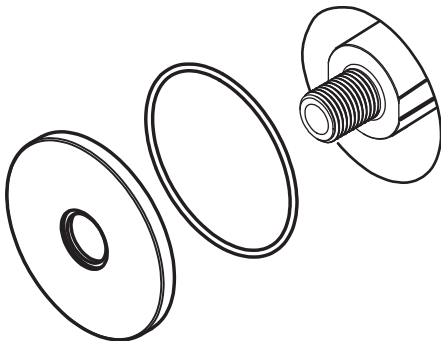
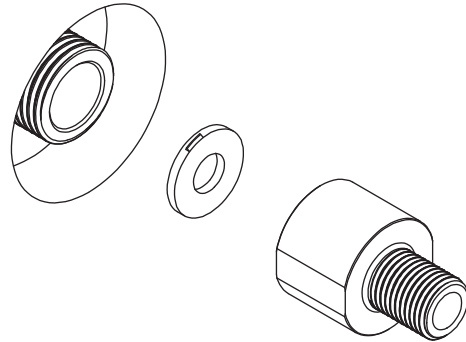
## Step 2

Apply a sufficient amount of food grade AS4020 approved thread sealant to the trimmed outlet.

## Step 3

Insert washer into the outlet adaptor, if not already done so and in a clockwise direction, screw the outlet adaptor to the outlet until firm and watertight seal is achieved.

*Note: once a watertight seal has been confirmed now would be the recommended time to waterproof.*

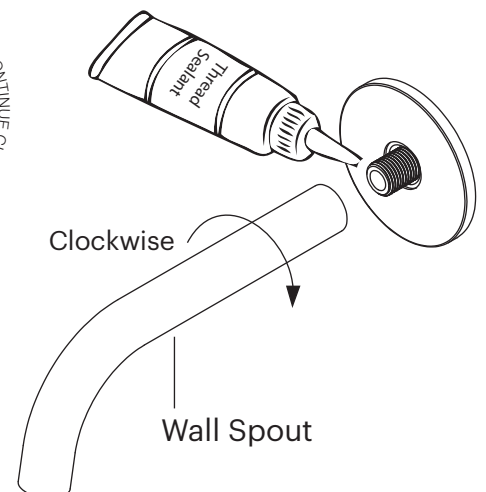
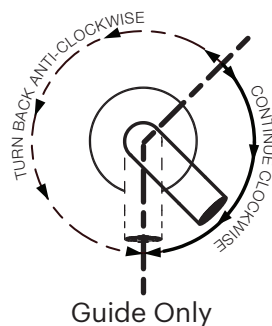


## Step 4

Place the wall plate and o-ring over the outlet adaptor and onto the wall.

## Step 5

Apply a sufficient amount of thread sealant to the outlet adaptor, then in a clockwise rotation, screw the wall spout until it locates into wall plate recess firmly in the downward vertical direction.



## Specifications

It is a requirement of state plumbing codes that licensed plumbers carry out all tapware installations. All installations must comply with the relevant requirements of AS/NZS3500 and local plumbing codes.

## Pressure

Maximum Hydrostatic Pressure - 1000kpa

Recommended Maximum Hydrostatic Pressure - 500 kpa. (AS/NZS 3500)

Recommended Minimum Hydrostatic Pressure - 150 kpa.

Maximum Hydrostatic Pressure may be exceeded under test conditions only in accordance with AS/NZS 3500. Where hydrostatic pressure exceeds the maximum stated above, pressure limiting valves must be installed or warranty will be void.

## Temperature

Maximum Water Temperature - 80°C

For optimum performance, Hot and Cold inlet water pressure should be equal.

## Care and Maintenance

[1] Product should be inspected for surface damage prior to installation. [2] Cleaning and handling of all finishes must be performed carefully. [3] Clean products using a soft cloth with warm soapy water only. [4] Never use harsh detergents or abrasive cleaners as these will damage the product. [5] Water marks can be removed from Matt Finishes with an application of a carnauba wax based non-abrasive polish on a microfibre cloth. [6] Do not use undue pressure when cleaning and wipe in one direction only. [7] Contact with harsh chemicals such as hair dye, hair bleach etc will result in damage to the finish. [8] Tapware should never be installed using acetone silicones. [9] Avoid the use of wax based furniture creams as this can result in a build up of deposits which will detract from the appearance. [10] Damage to finishes arising from improper installation or post installation use or failure to observe the above care and cleaning instructions will void all warranty agreements.

Dimensions are approximate. Information in this installation instruction is representative of the product available at the time of printing. Due to our policy of continuous product development, the design and specifications depicted are subject to change without notice. Please confirm all particulars with your client advisor prior to purchase.

**rogerseller**

rogerseller.com.au