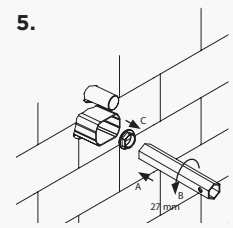
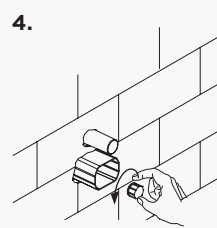
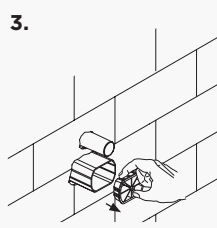
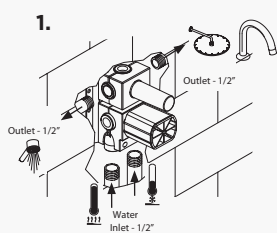


FANTINI MARE WALL MIXER WITH DIVERTER

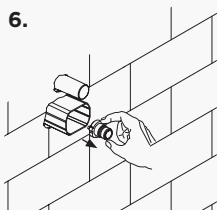
[328404]

NOTE

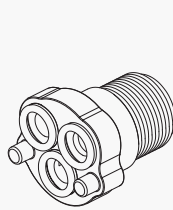
- Secure the mixer body to a suitable noggin, take note of the finished wall dimension to ensure the mixer body is positioned correctly.
- The mixer must be installed square to the finished tile face to ensure the cover-plate sits flush.
- During rough in always make sure the protective cover is left on to prevent damage to the mixer.
- Brazed connections should NOT be made directly onto the mixer as excessive heat will damage it.
- Supply pipe work must be flushed clean before installation.
- Maximum working pressure 1000kpa. Minimum working pressure 100kpa. Recommended working pressure 200 - 500kpa.
- Full installation instructions come with the product.



Remove the plug and flush the system to remove any foreign matter.



Always replace the black block with the white one as shown in fig 7 and reassemble.



Check the o ring are inserted in the correct positions

