

ARCHITECTURAL **GRATES + DRAINS**



SQP100Ti20-BLACK

Square Floor Waste

Downloaded 22/12/2022 (please check for updates)

Stormtech is the only linear drainage system available with full
Greentag and Watermark certification across our complete product range.

Telephone 1300 653 403 | **Web** stormtech.com.au





ARCHITECTURAL
GRATES + DRAINS



SQP100Ti20-BLACK

Square Floor Waste



Premium Square Floor waste with Tile Insert
powdercoated in black

The SQP Range of floor waste units allow the integration of a standard floor waste with Stormtech linear drainage.

Tile Insert Floor waste measures 130mm x 130mm.

It is suitable for tiles up to 12mm thick.

Code SQP100Ti20-BLACK

Range Square

Grate Style Ti

Category Square Floor Waste

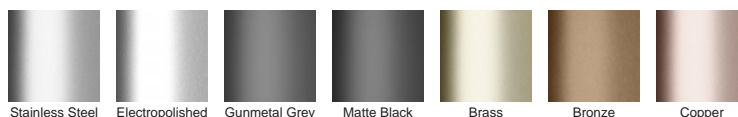
Channel Material Stainless Steel

Steel Grade 316

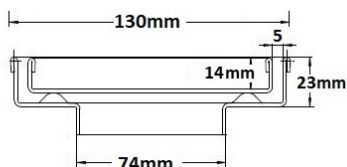
SPECIFICATIONS + DIMENSIONS

Channel Width	130mm
Channel Depth	23mm
Length(s)	130mm
Outlet Size	DN80

STORMTECH COLOUR FINISHES



Electroplate finishes subject to natural variation with time and local environment. Factors such as pools/surf beaches may require electropolishing. Contact us for suitability.



Grates longer than 1500mm supplied in sections.
Tile Inserts longer than 1200mm supplied in sections.
Channels over 3000mm supplied in sections with joiner.
+/-2mm tolerance on dimensions.

PRODUCT APPLICATIONS

Bathroom Drainage
Balcony Drainage
Commercial Drainage
Courtyard / Patio Drainage
Pool and Spa Area Drainage
Paved Area Drainage

Shower Drainage
Wet Area Drainage

Copyright © Stormtech Pty Ltd. Patent 733361. Drawings not to scale, please use dimensions shown.
Downloaded 22/12/2022 (please check for updates)



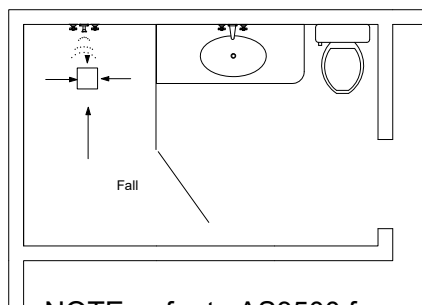
Visit **stormtech.com.au**
for tools + inspiration.

Phone **1300 653 403**

Email **info@stormtech.com.au**

SQ100Ti Bathroom

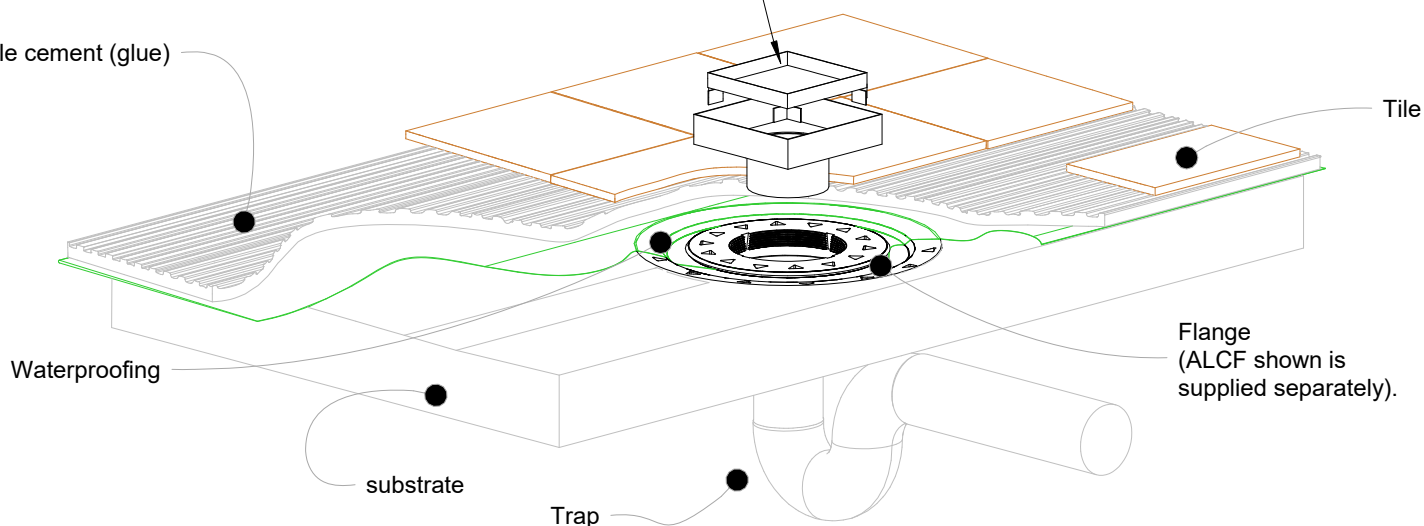
For SQ100Ti30 and SQ100Ti20, and 'P' versions



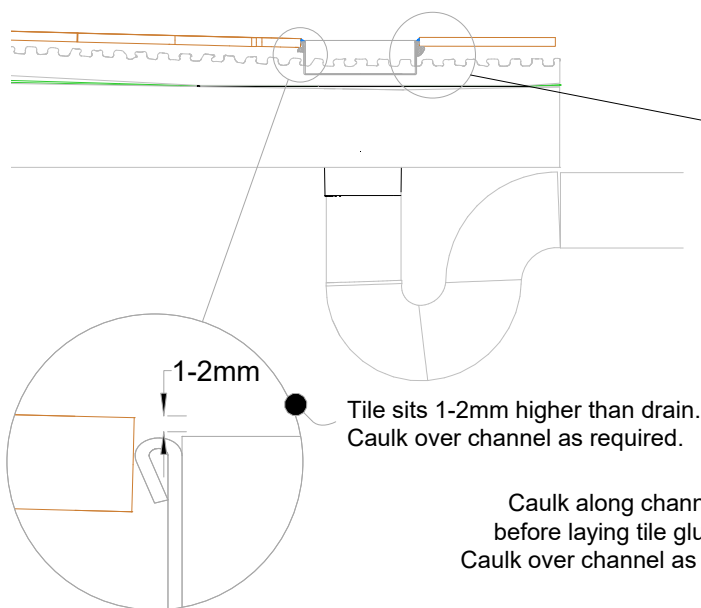
NOTE, refer to AS3500 for specific outlet pipe sizes related to your specific installation.

Cut tile to width and fix into tray. To ensure no metal contamination causes spalling below the tile. It is recommended to use a paint-on waterproof membrane on the interior of the tile insert tray before tiling to ensure no contaminants are trapped below against the stainless.

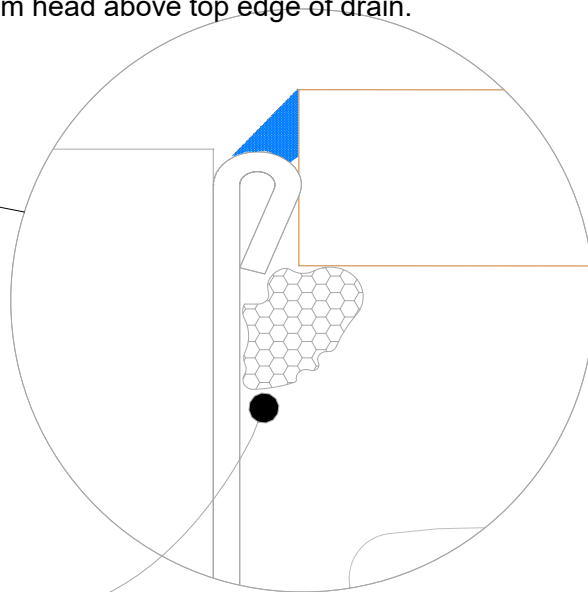
Tile cement (glue)



NOTE, this method requires the drain body to be above and separate from the waterproofing. Ensure the floor falls to drain are at least 1:80. Maximum flow rate at outlet is 23 litres per minute with 5mm head above top edge of drain.



Caulk along channel edge before laying tile glue or tile. Caulk over channel as required to finish.



Visit **stormtech.com.au**



StormtechTM

22 Norfolk Avenue, South Nowra, NSW 2541 Australia

Phone 1300 653 403 Email info@stormtech.com.au

