



Color Variants

BO470111
Stainless steel-backed full glass door
Width 60 cm

Included accessories

2 x enamel baking tray.
suit. pyrolytic clean.
1 x rotary spit.
1 x glass pan.
1 x grill shelf.
1 x grill tub with grid.
1 x pluggable meat probe.

Optional accessories

BA016105
Pull-out system for 60cm ovens
BA056115
Heating element for baking stone and
Gastronorm roaster.
BA056133
Baking stone.
GN340230
Gastronorm roaster in cast aluminium.

Product Variants

BO471111
Oven 400 series
Stainless steel-backed full glass door
Width 60 cm
Left-hinged
Controls at the top

BO470111
Oven 400 series
Stainless steel-backed full glass door
Width 60 cm
Right-hinged
Controls at the top

Handleless door / automatic door opening
Pyrolytic system
17 heating methods, with core temperature probe, rotisserie spit and baking stone function
TFT touch display
Panel-free appliance with surface control module
Electronic temperature control from 30 °C to 300 °C
Net volume 76 litres

Heating methods

Hot air.
Eco hot air.
Top + bottom heat.
Top + 1/3 bottom heat.
Top heat.
1/3 top + bottom heat.
Bottom heat.
Hot air + bottom heat.
Hot air + 1/3 bottom heat.
Full surface grill + circulated air.
Full surface grill.
Compact grill.
Baking stone function.
Roaster function.
Dough proofing.
Defrosting.
Keeping warm.

Handling

Automatic door opening.
Rotary knob and TFT touch display operation.
Clear text display.
Option to save individual recipes (incl. core temperature probe).
Information key with use indicators.
Side-opening door opens up to 180° angle.

Features

Core temperature probe with automatic shut-off.
Rotisserie spit.
Baking stone socket.
Actual temperature display.
Rapid heating.
Timer functions: cooking time, cooking time end, timer, stopwatch, long-term timer.
60 W halogen light on the top.
2 x 10 W halogen light on the side.
Enamelled side shelf supports with 4 tray levels, pyrolysis-safe.

Safety

Thermally insulated door with quadruple glazing.
Child lock.
Safety shut-off.
Cooled housing with temperature protection.

Cleaning

Pyrolytic system.
Gaggenau enamel.
Heated catalyser to clean the oven air.

Planning notes

Door hinge not reversible.
The door panel surface of the appliance extends 47 mm from the furniture cavity.
If the handle (optional accessory) is retrofitted, the outer edge of the door handle extends 94 mm from the furniture cavity.

Characteristics

Color / Material Front
Stainless steel
Built-in / Free-standing
Built-in
Integrated Cleaning system
Pyrolytic
Required niche size for installation (HxWxD)
590-590 x 560-560 x 550
Dimensions of the product (mm)
595 x 590 x 547
Dimensions of the packed product (HxWxD) (mm)
780 x 760 x 680
Control Panel Material
without panel
Door Material
Stainless steel behind glass
Net weight (kg)
62.194
Usable volume of cavity (l)
76
Cooking method
Baking stone function, Bottom heat, Bottom heating, 1/3 top heat., Conventional heat, Defrost, Dough proving setting, Full width grill, Half width grill, Hot Air, Hot air and 1/1 bottom heating, Hot air and 1/3 bottom heating, Hot Air-Eco, Hot air grilling, Roaster function, Top heat, Top heating, 1/3 bottom heat., warming
First cavity material
Enamelled
Temperature control
electronic
Number of interior lights
3
Approval certificates
Australia Standards, CCC, CE, China, China ROHS 20, Eurasian, G-Mark, Ukraine, VDE
Length electrical supply cord (cm)
EAN code
4242006240196

Consumption and connection features

Number of cavities (2010/30/EC)
1
Energy efficiency class (2010/30/EC)
A
Energy consumption per cycle conventional (2010/30/EC)
1.25
Energy consumption gas oven per cycle conventional (2010/30/EC)
Energy consumption per cycle forced air convection (2010/30/EC)
0.83
Energy consumption gas oven per cycle forced air convection (2010/30/EC)
Energy efficiency index (2010/30/EC)
95.4
Electrical connection rating (W)
3700
Current (A)
16
Voltage (V)
220-240
Frequency (Hz)
50
Plug type
fixed connection, no plug
2018-12-04
Page 1

Consider the overhang, incl. the door handle where applicable, when planning to open drawers next to the appliance.

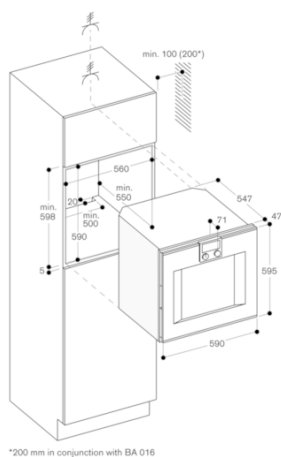
When planning a corner solution, pay attention to the 90° door opening angle.

To achieve the 550 mm installation depth, the connection cable needs to follow the slanted edge on the lower right hand corner of the housing.
The mains socket needs to be planned outside of the built-in niche.

Connection

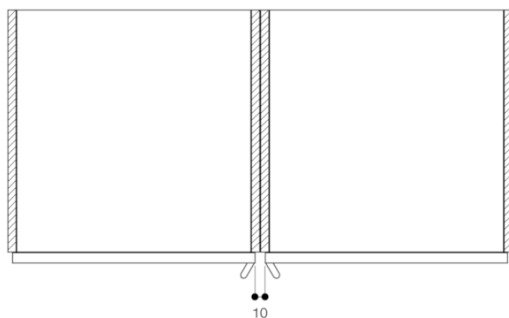
Total connected load 3.7 kW.
Plan a connection cable.

BO470111
Oven 400 series
Stainless steel-backed full glass door
Width 60 cm
Right-hinged
Controls at the top
2018-12-04
Page 2

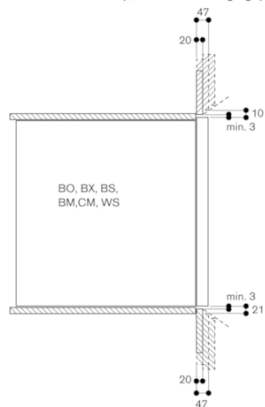


*200 mm in conjunction with BA 016

When installed next to each other



Cross section of the top/bottom door edge gaps



Air inlet cross section at the door edges

