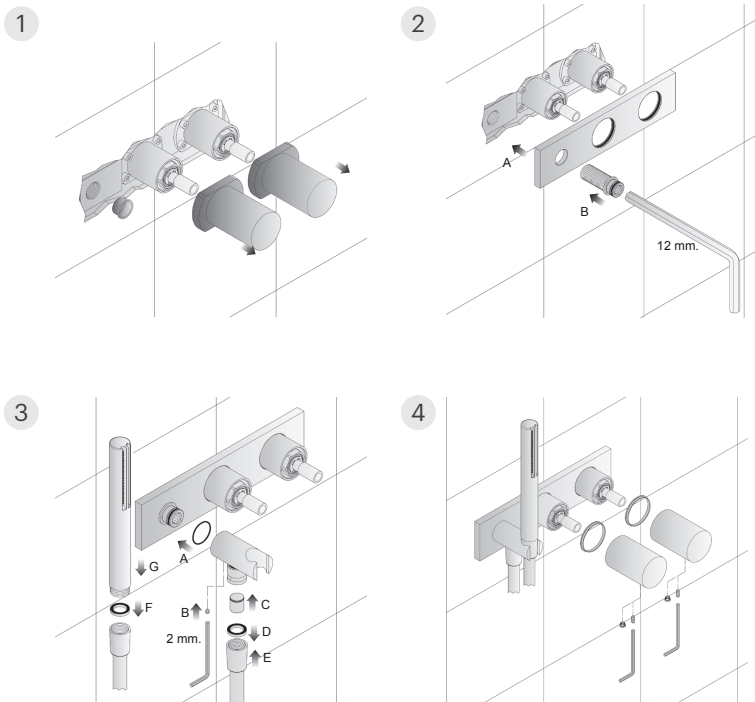


Fantini Milano Shower/Bath Mixer with Hand Shower
328107

Please note

- Secure the mixer body to a suitable noggin, take note of the finished wall dimension to ensure the mixer body is positioned correctly.
- The mixer must be installed square to the finished tile face to ensure the cover-plate sits flush.
- During rough in always make sure the protective cover is left on to prevent damage to the mixer.
- Brazed connections should NOT be made directly onto the mixer as excessive heat will damage it.
- Supply pipe work must be flushed clean before installation.
- Maximum working pressure 1000kpa. Minimum working pressure 100kpa. Recommended working pressure 200 – 500kpa.
- Full installation instructions come with the product.



Dimensions are approximate. Information provided in this installation guide is representative of the actual product available at the time of printing. Due to our policy of continuous product development, the design and specifications depicted are subject to change without notice. Please confirm all particulars with your sales consultant prior to purchase.