

X-LINE BASIN MIXER

[120728]

NOTE

1. Connect hot and cold flexible hoses to isolation taps.
2. Do not twist, kink or stretch flexible hoses (minimum bend radius 45mm). Hand tighten flexible hose connecting nuts, then apply quarter turn with a spanner.
3. Maximum working pressure 1000kpa. Minimum working pressure 100kpa. Recommended working pressure 500kpa.
4. Supply pipe work must be flushed clean before installation.
5. Full installation instructions come with the product.

FIG. 1

This mixer is fitted with an anti-scald temperature adjustment device that controls the ratio of hot to cold water.

To limit the hot temperature, first remove the handle and unscrew the dome ring. Carefully lift out the round red plastic ring, noting the - + symbols on the rear of the top face of the ring. Rotate the red ring in the direction of the - sign and relocate its teeth back into the blue plastic ring below it in the tap body.

To re-establish maximum temperature, reverse the above steps so that the - + sign is located above the missing tooth at the rear of the blue ring.

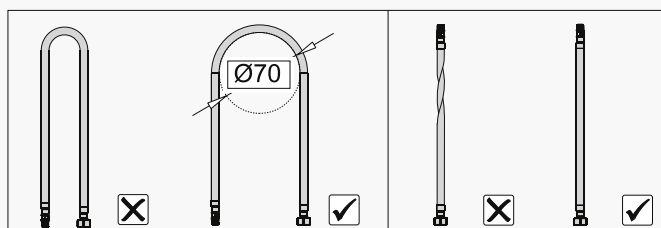
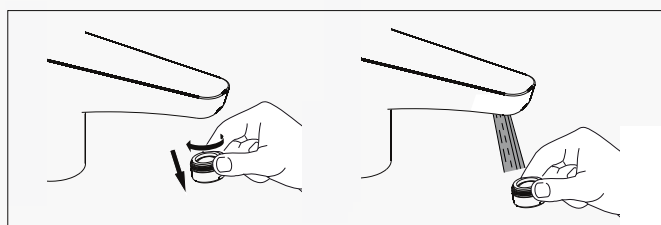
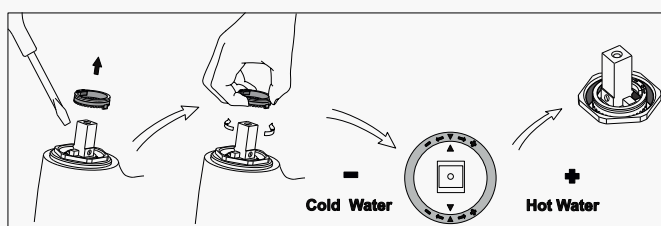


FIG. 1



KEY

- A. Control lever
- B. Cartridge cap
- C. Body
- D. Seal
- E. Bench (Max 30mm)
- F. Fastening plate
- G. Fastening stud
- H. Flexible connector
- I. 1/2" BSP female