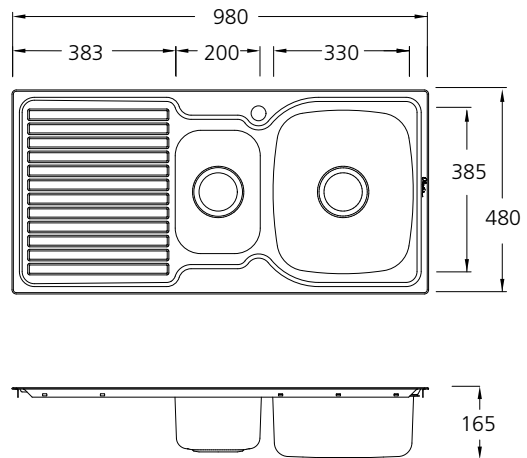


EE02

Tasman Endeavour

Oliveri®

RIGHT HAND BOWL



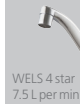
INCLUDED ACCESSORIES

AC14



RECOMMENDED TAPWARE

PS113



WELS 4 star
7.5 L per min

MA4010



WELS 4 star
7.5 L per min

OPTIONAL ACCESSORIES

AC01



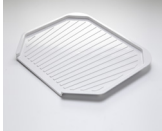
LP01



LP02



AC16



AC29



Oliveri



**Australia's
Sink
Manufacturer**

SPECIFICATIONS

Description

1 & 1/2 bowl inset sink with drainer

Sink Size

980W x 480H

Main Bowl

330W x 385H x 155D / 17L

1/2 Bowl

200W x 290H x 130D / 7L

Construction

2 piece, bowls & drainer seam welded

Material

304 grade, 18/10 polished stainless steel (0.8mm thick)

Installation

Topmount only

Fixings

Adjustable clips supplied, sealing gasket fitted

Cut Out Template

960 x 460 x 15mm radius

Min Cabinet Size

600mm

Tap holes

1 tap hole (for no tap hole order product code 'EE00')

Waste fittings

2 x 90mm basket waste included

Overflow

Special order option available

Carton Size

1020 x 520 x 190mm

Weight

6.0kg

Warranty

Lifetime manufacturer's warranty (refer to oliverisinks.com)

For more information call **1300 13 7465** or visit **www.oliverisinks.com**



facebook.com/
OliveriAU



twitter.com/
OliveriAU



pinterest.com/
OliveriAU

© Registered trademark of Tasman Sinkware. Under its policy of ongoing product development Tasman Sinkware may from time to time change product specification without notice. All dimensions given are approximate and should be checked prior to installation. See Oliveri installation instructions for installation details.